

INDIAN BANK

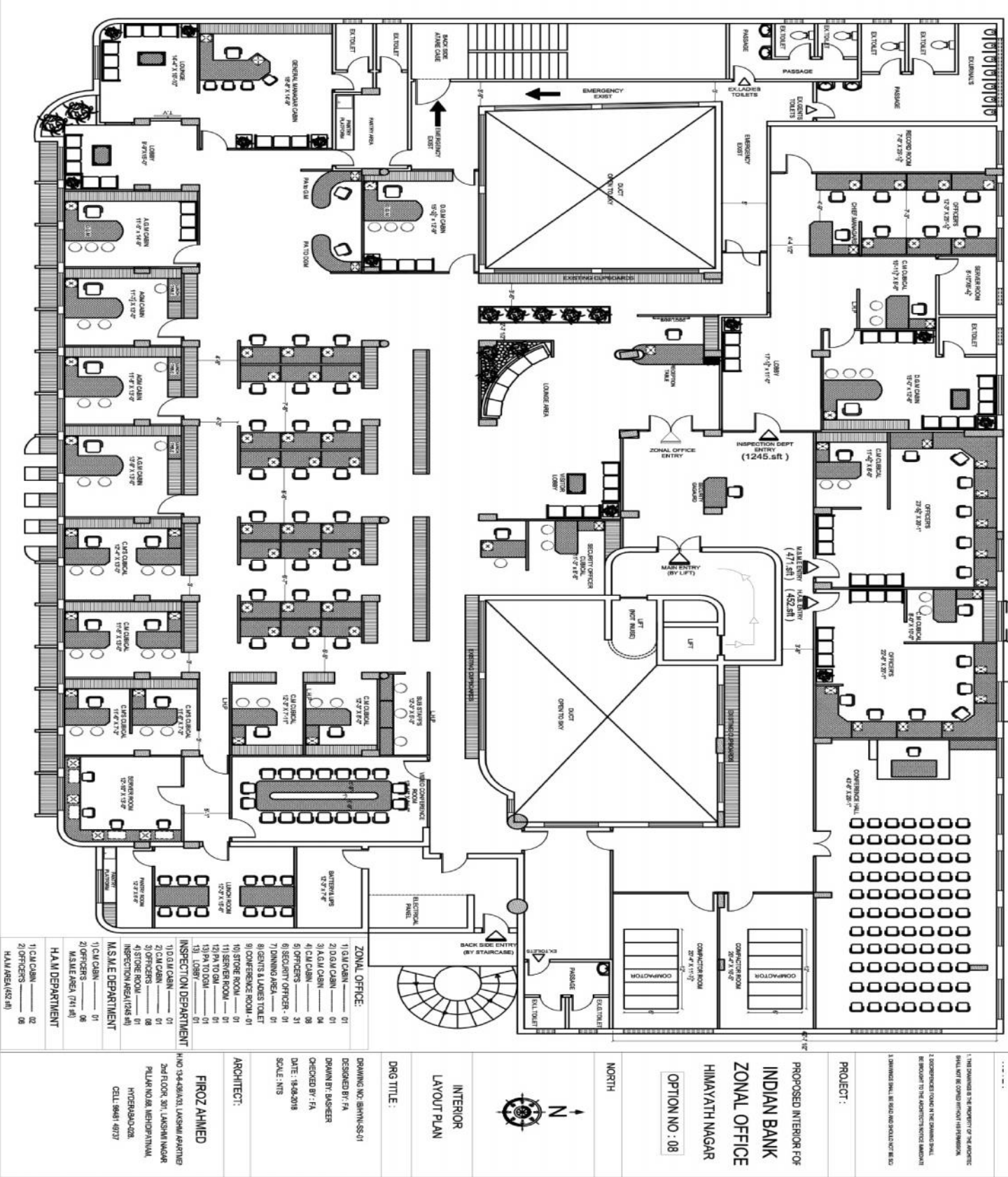
TENDER

FOR

**RENOVATION WORKS (INTERIOR, ELECTRICAL, A/C &
CIVIL WORKS) FOR INDIAN BANK ZONAL OFFICE,
3-6-365, 4TH FLOOR, LIBERTY PLAZA, HIMAYATNAGAR,
HYDERBAD,
T.S- 500029.**

PART - II

PRICE BID



PROPOSED INTERIOR FURNISHING WORKS
FOR INDIAN BANK, ZONAL OFFICE,
HIMAYATH NAGAR, HYDERABAD.

Detail BOQ For All Interior
Works (Zonal Office)

S.No.	Item	Unit	Total Qty	Rate's	Amount
A	INTERIOR FURNISHING (CONTRACT WORK)				
1	Providing and fixing main ENTRANCE DOOR and ENTRANCE PARTITION in aluminum framed glazed door frame of size 4"X3" beach wood glazed door shutter using 12mm thk etched Modi float glass /approved make with Vijaya Bank Logo of 9" dia engraved design border of 8mm thk and having 6"X1.65" (150mmX40mm) top & side rails, bottom with 8"X1.65" (200mmx40mm) of good quality beach wood & topped with decorative beach wood beading and finished the the same best melamine polish of desired shape & colour with all necessary accessories such as floor springs of derma make, brushed SS handles (SU12PSS of dorset make of silver bronze finish) fixed to the doors inside & outside, Godrej Mortise lock of brass finish, etc. as directed by Bank / Architect. Complete as shown in drawing. (Bank logo to be etched on glass as shown in the drg.)	Sft	387.00		
3	Providing and fixing Full hight FIBER CEMENT BOARD PARTITION Solid / Glass in double skin of 8mm thk. with lappam in two coats of Acrylic emulsion paint after appropriate surface preparation of one coat of primer. Complete as shown in drawing.	Sft	4,682.00		
4	Providing and fixing Low hight FIBER CEMENT PARTITION with DOUBLE SKIN (4'-3" ht.),as per 2 above , with lappam in two coats of Acrylic emulsion paint after appropriate surface preparation of one coat of primer.	Sft	1,452.00		
5	Providing and fixing GENERAL MANAGAR TABLE (8'-0"X 3'-0") as per shape shown in drawing, with side table and 1no.drawer unit with 18mm thick BWR ply verticals and horizontals with 1.0mm thk shell finish laminate, 12mm thk plain glass on table top as per shape, with TW polished edge beading to all exposed edges of ply, incl. all approved accessories like drawer and sliders, locks, handles etc. with all internal surfaces of the table to be painted with two coats of synthetic enamel paint on plywood after one coat of primer, Provision readymade CPU stand, key board & footrest of size 75mmx 38mm shall be made at the bottom. with beach wood, wire manager shall be provided at the corner of the counter top. Complete as shown in the drawing.	No	1.00		

6	Providing and fixing D.G.M / A.G.M TABLE (6'-0"X 3'-0") as per shape shown in drawing, with side table and 1no.drawer unit with 18mm thick BWR ply verticals and horizontals with 1.0mm thk shell finish laminate, 12mm thk plain glass on table top as per shape, with TW polished edge beading to all exposed edges of ply, incl. all approved accessories like drawer and sliders, locks, handles etc. with all internal surfaces of the table to be painted with two coats of synthetic enamel paint on plywood after one coat of primer, Provision readymade CPU stand, key board & footrest of size 75mmx 38mm shall be made at the bottom. with beach wood, wire manager shall be provided at the corner of the counter top. Complete as shown in the drawing.	No	6.00		
7	Providing and fixing Ch.MANAGER TABLE / SECURITY officer TABLE (5'-6"X 2'-6") as per shape shown in drawing, with side table and 1no.drawer unit with 18mm thick BWR ply verticals and horizontals with 1.0mm thk shell finish laminate, 12mm thk plain glass on table top as per shape, with TW polished edge beading to all exposed edges of ply, incl. all approved accessories like drawer and sliders, locks, handles etc. with all internal surfaces of the table to be painted with two coats of synthetic enamel paint on plywood after one coat of primer, Provision readymade CPU stand, key board & footrest of size 75mmx 38mm shall be made at the bottom. with beach wood, wire manager shall be provided at the corner of the counter top. complete as shown in the drawing.	No	13.00		
8	P.A (5'-0"X 2'-6") with side table :Table tops of size 1500mm X 750mm (5'-0"X2'-6") made out of 19 mm BWR ply with 1.0mm thk laminated (approved colour and shade), fixed with edges fixed with beach wood lapping, (2'-6") 750mm from the ground level. it will have a side table of size 1050mm X 375mm (3'-6" x 1'-3"), Each unit shall be provided with a sliding key board tray (2'-3") 675mm of wide with telescopic drawer sliders, cupboard below the with locking arrangements SS handle, brass hinges etc the front, back & side surface shall be laminated with 1.0mm thick laminate. The internal surface shall be painted with two coats of enamel paint with approved colour and shade, over a coat of primer. Provision readymade CPU stand, key board & footrest of size 75mmx 38mm shall be made at the bottom. with beach wood, wire manager shall be provided at the corner of the counter top.	No s.	2.00		

9	Providing and fixing OFFICER/ CLERICAL TABLE without side TABLE of 5'-0" X2'-9" , table made out of 18 mm commercial ply board (approved make)structure with edges fixed with teak wooden lapping ,having officer table top 2'-6" from the ground level & 2'-6" clear top width. it will have a side table of size 1'-6" x 3'-0". Each unit shall be provided with a sliding key board tray 2'-3" of wide with sliders, cupboard below the drawer with locking arrangements aluminum handle, brass hinges etc the front back & top surface shall be laminated with 1.5mm thick rubber wood laminate. The internal surface shall be painted with to coats of enamel paint (VANILLACREAM, CODE -3229) of Asian paints, over a coat of primer. Provision for c.p.u stand 1'-0" x2'-0" & footrest of size 75mmx 38mm shall be made at the bottom. Wire manager shall be provided at the corner of the counter top. All exposed edges of the block shall be provided with teak wooden beading (3"x1"front side and 1"x 3/4" inner side) and polishing done etc. complete as shown in drawing.	No	1.00		
10	RECEPTION Counter: Providing, making and placing in position customer care counter with overall size of 1500 x 750 x 750mm made 18mm BWR plywood, all sides finished with 1mm laminate of approved colour, with one drawer unit. All exposed edges of ply / board to be finished with beech wood and melaminine polished. top with 12mm thk glass with edge rounding and to be fixed on studs and provision for counter slip store, etc, incl. all accessories like drawers and sliders, locks, handles etc. with all internal surfaces of the table to be painted with two coats of synthetic enamel paint over primer, as per drawing, complete table.	No s	1.00		
11	VIDEO CONFERENCE TABLE (1'-9" Wide) with Glass top :Table as per shape shown in drawing, made out of TW legs (4"X3") verticals (4no) & horizontals (4no) tie up at top, 12mm plain flot glass with Acid wash etching to be done with edge full rounding smoothly. Provision for footrest of size (3"X3" shall be made at the bottom (-6").. All exposed teak wooden to be matt melamine polishing to be done etc. complete as shown in drawing.	Rft	60.00		
12	Providing and fixing GENERAL CUPBOARDS in 18mm thk BWP ply verticals and horizontals with 18mm thk BWP ply shelves with battened shutter in 12mm thk BWP ply with 1.0mm thk shell finish laminate on all external exposed surfaces with shutters fixed with auto closing hinges at not more than 2'-0" apart inclusive all approved accessories like handles, cupboard locks, tower bolts etc. complete as shown in the drawing. All internal exposed ply surfaces to be painted with two coats of synthetic enamel paint on lappam finished plywood after one coat of primer and all exposed edges of ply to be fixed with TW beading. (Measurement will be made on elevation area of cupboard irrespective of depth)	Sft	742.00		

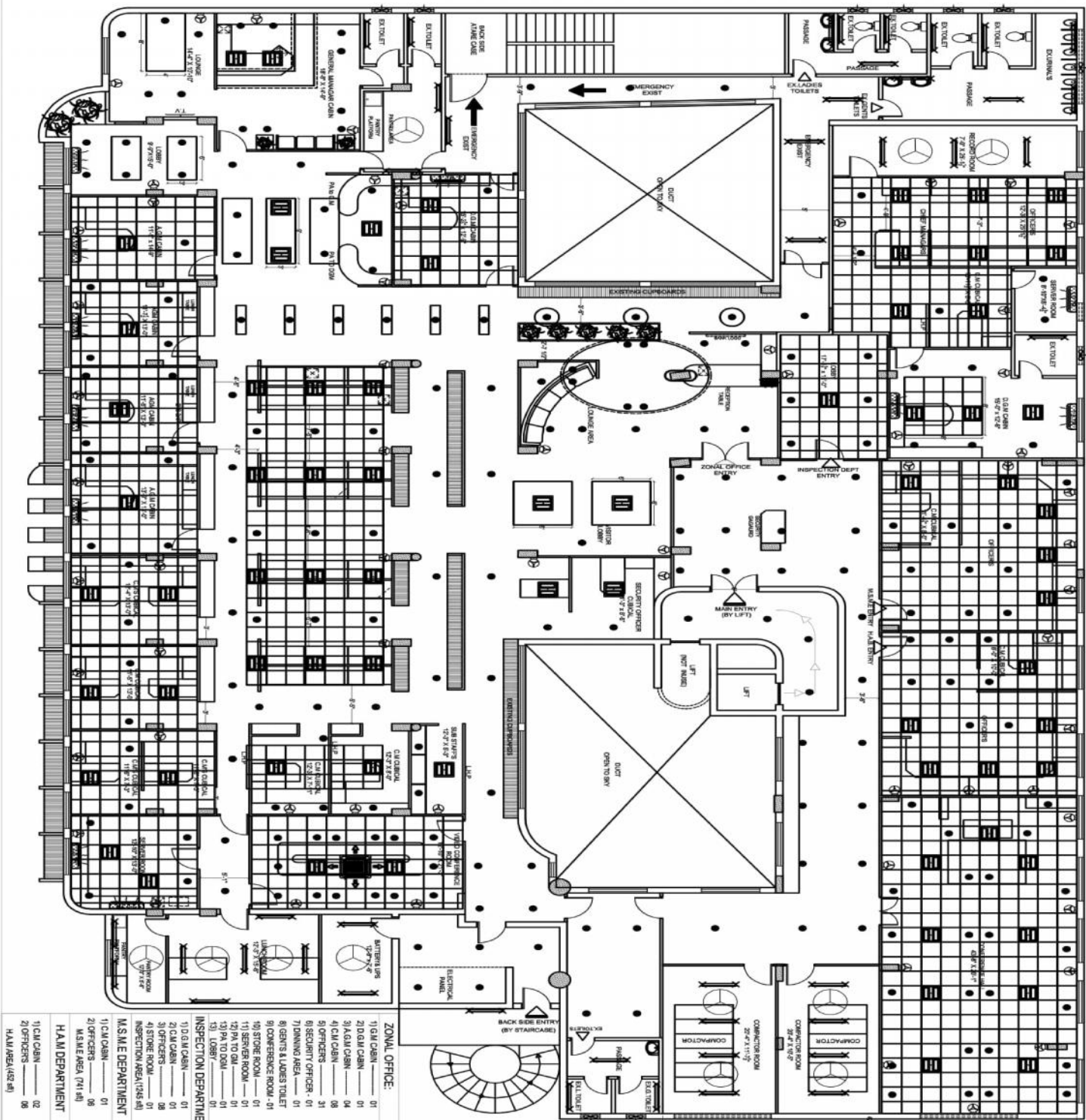
13	WORK STATION / SERVER TABLE'S (counter-2'-6" wide) With Drawer: counter table (Chamfer / straight) of 5'-0" length as per shape shown in drawing, made out of 18 mm BWR ply with Post forming Table tops , having table top 2'-6" from the ground level & 2'-0" clear top width, Each unit shall be provided with a (15" x 6") drawer with locking arrangements SS handle, brass hinges etc the front back & top surface shall be laminated with 1.0mm thick approved laminate. The internal surface of drawer shall be laminated with 0.8 mm thick approved laminate, bottom or un seen surfaces should be painted with to coats of enamel paint (VANILLACREAM, CODE -3229) of Asian paints, over a coat of primer, after lappam finish. Wire manager shall be provided at the corner of the counter top. All exposed edges of the ply shall be provided with teak wooden lapping and melamine polishing to be done etc. complete as shown in drawing.	Rft	272.00		
14	Providing and fixing SUB STAFF TABLE in 18mm thick BWR ply with 1.0mm thk shell finish laminate on top fixed to 3" x 1.5" TW frame work with intermediate TW members of 2" x 1.5" spaced not more than 3'-0" apart, complete as shown in the drawing. All exposed ply and wood surfaces to be painted with two coats of synthetic enamel paint after one coat of primer. (Measurement will be made as per surface area of table)	Sft	15.00		
15	GLASS PARTITION of work station (1'-6"htX 2') above Curve /stright as per layout plan (15" ht. with 12mm thk. etched glass) fixed to 3"mm dia TW uprights, with edge rounding and side partition with coping on the top at the every edge of the table. Complete as shown in drawing.	Rft	97.50		
16	Providing and fixing 12 mm th. SOFT BOARD on 12mm th. BWR ply with cloth covering of not less than Rs.250/- per meter, complete incl. painting the rear surface of ply with two coats of synthetic enamel paint and providing TW beading all around.	Sft	133.00		
17	FALSE CEILING: Provided & fixing with Indian gypsum or equivalent suspended false ceiling (in any shape as shown in drawing) which includes providing and fixing G.I perimeter channels of 0.55mm thk having one flange of 20mm & another flange of 30mm & a web of 27mm along the perimeter of the ceiling, screw fixed to the brick wall with the help of nylon sleeves & screws, at 610 mm centers. as per manufacturers spec's, taping of joints and finishing. finally the board are to be jointed and finished so as have a flush lock which includes filling & finishing tapered square edges of the boards with jointing compound, paper tape and with one coat of lappam perfectly to level the surface, complete. Complete as shown in drawing.	Sft	5,947.00		

18	<p>FALSE CEILING (GRID) : The grid false ceiling shall be provided in the Banking Hall, Manager's etc. Refer drwgs. No. 1-4-8. the ceiling height and level shall be provided at the perimeter. The minimum height of the ceiling cavity should be 100mm. All service fittings integrated within the suspended ceiling must be independently supported from the ceiling grid by a structure designed for the purpose. Ceiling tiles: shall be Armstrong fine figured classic lite RH99 of 16mm thickness. Suspension system: shall be of Armstrong Turlock silhouette reveal profile grid system with 15mm flanges incorporating 3mm central recess in global white with black reveal. Silhouette main runners and cross tees to have mitered ends and "birds mouth" notches to provide mitered cruciform junctions.</p>	Sft	5,003.00		
	<p>Installation: main runners will be placed at 1200mm centers securely fixed to the structural soffit by approved hangers at 1200mm maximum centers and not more than 150mm from spliced joints. the last runner at the end of each main runner should not be greater than 600mm from the adjacent wall. 1200mm long cross tees to be interlock between main runners at 600mm centers to form 1200x600mm modules. cross tees 600mm require independent support. 600x600mm modules to be formed by fitting 600mm long cross tees centrally between the 1200mm cross tees. the 1200mm cross tees to have central "birds mouth" notches to facilitate fitting of 600mm cross tees. the perimeter trim to be Armstrong Turlock equal wall angle of white color secured to walls at 450mm maximum centres. complete as shown in drawing.</p>				
19	<p>Providing and fixing DRAWER UNIT (1'-2"X1'-6"X2'-6"ht.) in 18mm thick BWR ply, for drawers verticals and horizontals with 1.0mm thk shell finish laminate on all visible outer surfaces with drawer slides incl. all accessories such as handles, auto closing hinges, single key locking system for drawers, complete as shown in the drawing. All exposed ply surfaces to be painted with two coats of synthetic enamel paint on plywood after one coat of primer.</p>	No s.	6.00		
20	<p>Providing and fixing water proof solid core FLUSH DOORS shutters 35mm thk (TW wood beading of 0.5" x 1.25" to be provided all around) of approved make as per ISI specifications and 1mm thk shell finish laminate on both sides with vision hole cutting with 6mm thk plain glass as indicated. The shutter shall be fixed to frame work, necessary hardware fittings like brass butt hinges, door closers, mortise locks, tower bolts, handles etc. of approved make, including all incidental and operational charges etc., complete.</p>	Sft	301.50		

21	Providing and fixing GLASS DOOR where indicated to partition frame work in 8mm thk plain float glass fixed in 4"x1.5" top, middle and side rails, 6"x1.5" bottom rail, all in natural melamine polished MT wood including all accessories of approved brand such as floor springs, brushed SS handles, locks, etc. including all incidental and operational charges etc., complete as shown in the drawing.	Sft	133.00		
22	Providing and fixing WALL PANELLING in any shape to columns and walls where indicated with 8mm thk BWR ply fixed to 1" x 2" salwood verticals and horizontals spaced not more than 2'-0" apart in both directions with 1mm thk shell finish laminate upto a height of 3'-6" and textures "Spectrum" paint finish above after appropriate surface preparation, complete as shown in the drawing.	Sft	535.00		
23	VERTICAL VENETION BLINDS: Providing and fixing 100mm wide vertical blinds of mac make of approved range with louver made of polyester base fabric and providing with guardian tilter wand cord accessories like head channel, end control unit, tilt rod, tilter chain, carrier, space, bottom mechanism, cord, cord weight, installation, etc; of approved colour and texture. complete as per Bank / Architect direction.	Sft	669.00		
24	ROLLAR BLINDS: Providing and fixing 100mm wide vertical blinds of mac make of approved range with louver made of polyester base fabric and providing with guardian tilter wand cord accessories like head channel, end control unit, tilt rod, tilter chain, carrier, space, bottom mechanism, cord, cord weight, installation, etc; of approved colour and texture. Complete as per Bank / Architect direction.	Sft	129.00		
25	Painting to walls with lappam in two coats of Acrylic emulsion paint after appropriate surface preparation of one coat of primer.	Sft	8,202.00		
26	Painting to walls and ceiling without lappam in two coats of Acrylic emulsion paint after appropriate surface preparation of one coat of primer.	Sft	7,293.00		
27	Painting to Window/ Ventilator/ Shutter in two coats of synthetic enamel paint after appropriate surface preparation of one coat of primer.	Sft	1,316.00		

28	Providing and fixing covering to rolling shutter and shutters for covering electrical panel board, etc., with 18mm BWR ply with 1mm thick shell finish laminate of approved shade and make including painting of inside with primer and two coats of synthetic enamel paint, and providing teak wood beading to all exposed edges including all accessories hinges, handles, ballcatches, etc., complete.	Sft	20.00		
29	Providing and fixing PIGION HOLE ., with 18mm BWR ply with 1mm thick shell finish laminate AND 1mm laminate for inner surfaces too of approved shade, providing teak wood beading to all exposed edges including all accessories hinges, handles, ballcatches, etc., complete.	Sft	85.00		
30	DINING TABLE (6'-0"X 2'-6") :Table as per shape shown in drawing, made out of TW legs (4"X3") verticals (4no) & horizontals (4no) tie up at top, 12mm plain flot with Acid wash etching to be done with edge full rounding smoothly. Provision for footrest of size (3"X3" shall be made at the bottom (-6").. All exposed teak wooden to be matt melamine polishing to be done etc. complete as shown in drawing.	No s.	2.00		
31	Pantry counter: Providing and fixing Pantry counter with Granite top and storage below (6'x 2'x 2'-9"ht.) with a SS. sink of 16"/ 18" and storage with 18mm BWR ply and laminate, complete incl. painting the rear surface of ply with two coats of synthetic enamel paint and providing TW beading all around.	Sft	21.00		
32	Supplying and Fixing WALL PAPER Complete as per Architect / Bank Selection.	Sft	210.00		
33	Removing of Existing Partition and Temporary Connections		LS		
34	Removing of Existing False Ceiling debris from the site.		LS		
*	TOTAL AMOUNT for Interior works Total Zonal office:				

CONTRACTOR SIGNATURE



PROPOSED INTERIOR FOR INDIAN BANK ZONAL OFFICE HIMAYATH NAGAR

OPTION NO. - 08

PROJECT :

ARCHITECT:

DESIGNED BY: FIROZ AHMED

DRAWN BY: BASHEER

CHECKED BY: F.A.

DATE: 08-05-2018

SCALE: NTS

ELECTRICAL PLAN

DRG TITLE :

DRIVING NO.: BHVN-SS-01

2nd FLOOR, 30, LAKSHMI NAGAR, PULIYAN NO. 68, HEMCHANDRA NAGAR, HINDUPUR, DIST. CHITTOOR, AP.

CELL: 98481 49737

1. THE DRAWING IS THE PROPERTY OF THE ARCHITECT. SHALL NOT BE COPIED, REPRODUCED OR TRANSMITTED IN ANY FORM OR BY ANY MEANS, WITHOUT THE WRITTEN PERMISSION OF THE ARCHITECT.

2. NO PART OF THIS DRAWING SHALL BE REPRODUCED OR TRANSMITTED IN ANY FORM OR BY ANY MEANS, WITHOUT THE WRITTEN PERMISSION OF THE ARCHITECT.

3. CHANGES SHALL BE INDICATED BY CIRCLES AND NOT BE SO.

PROPOSED INTERIOR FURNISHING WORKS
FOR INDIAN BANK, ZONAL OFFICE,

Detail BOQ For All Electrical
Works (Zonal Office)

BILL OF QUANTITY FOR ELECTRICAL INSTALLATION WORKS					
S.NO	DESCRIPTION	UNIT	Total Qty	Rate (Rs)	Amount(Rs)
	INTERNAL ELECTRICAL WORKS				
E - 1	<u>Lights Points(Including Circuit Wiring 2x2.5+1.5 Sqmm)</u>				
	Point Wiring for Light/ Fan/ Exhaust fan with 2runs of 650V grade 1.5 Sq.mm FRLS PVC & 1 run of 1.5 Sq.mm PVC insulated Copper wires , run in 25 mm dia heavy gauge MS conduits concealed in wall / ceiling conforming to IS including all accessories such as junction boxes, conduit bends elbows and ceiling rose, anodized GI Switch box with modular switch and the box covered with front plate.(Point Wiring Include Circuit Wiring From Main Db to Switch Board with 2x2.5 +1.5 Sqmm Copper flexible wire etc)				
a	One Light point controlled by one 6A switch.	Nos	285		
b	Two Lights point controlled by one 6A switch.	Nos	32		
c	Three Lights point controlled by one 6A switch.	Nos	14		
d	Exhaust fan point controlled by one switch.	Nos	11		
e	Ceiling fan point controlled by one switch & Electronic Step type Regulator and Concealed MS fan hook box.	Nos	11		
f	Supply and fixing of 6A, 3Pin Socket outlet switches of 6A rating boards for Wall Mounting Fans and (Dependant points in switch boards)				
i	Independent points	Nos	62		
ii	Dependent points	Nos	59		
g	Inverter points	Nos	76		
E - 2	Supply and Wiring with the following size 650V grade FR PVC insulated Copper conductor wires in suitable MS conduit including end terminations with suitable lugs.				

	a) Supply and wiring from UPS Room DB, with required all Connections and Suitable MS Conduits. 2runs of 2.5Sq.mm PVC wires with 1run of 1.5 Sq.mm MS Conduits for UPS out going Wirings	Rmt	266		
	b) 2runs of 4Sq.mm PVC wires with 1run of 2.5 Sq.mm MS Conduits	Rmt	134		
	c) 2 runs of 6 Sq.mm PVC wires with 1 run of 4 Sq.mm PVC insulated Copper earth wire in MS in conduit. For A/C Sockets	Rmt	140		
	d) 4 runs of 4 Sq.mm PVC wires with 2 runs of 4Sq.mm PVC insulated Copper earth wire in MS conduit.	Rmt	86		
	e) 2 runs of 10 Sq.mm PVC wires with 1 run of 6 Sq.mm PVC insulated Copper earth wire in MS in conduit. For A/C Sockets	Rmt	72		
	f) 4 runs of 16 Sq.mm PVC wires with 2 runs of 6Sq.mm PVC insulated Copper earth wire in MS conduit.	Rmt	92		
	g) 2runs of 4.0 Sq.mm PVC wires with 1run of 1.5 Sq.mm PVC wire for Name board from the 10 A DP MCB on the main board	LS	5		
E - 3	Light / Fan Fixtures				
	Supply and Installation of following type Fluorescent/ Compact fluorescent/ Incandescent light fixtures on wall/ Ceiling including all fixing accessories such as leads, Teak wood round block etc complete as required. The Fluorescent/CFL fixtures shall be complete with Low loss copper ballast PF improvement capacitor, Bipin Rotor type lamp holder, starter, starter base, all prewired upto the terminal block. All fixtures shall be supplied with lamps. The Catalogue Numbers refers to Philips Make or equivalent approved make.				
	a) Recess mounted LED Luminaire 36 x 1W Class LED, Wipro make code: LM - 036 - XXX - WH - XX./Philips(Full Reflector)				
	Supply	Nos	63		
	Erection	Nos	63		
	b) Recess mounted LED Down lighter with Pressure die cast aluminum housing (15 x 1W), Wipro make code: LD 49 - 900 - XXX - 60 - XX.				

	Supply	Nos	229		
	Erection	Nos	229		
	c) 1X40 / 18W Fluorescent Tube light fixture Wall/ Ceiling mounted Electronic Choke (Philips Make TMS 200/140)				
	Supply	Nos	42		
	Erection	Nos	42		
	d) Recess mounted LED strip in concealed area, Wipro make.	Rmt	18		
E - 4	Ceiling Fans				
	Supply & Fixing of 1200 mm sweep Crompton Make High Speed Ceiling fan with standard down rod, all accessories Electrical connections. Including fixing materials required.				
	Supply	Nos	11		
	Erection	Nos	11		
E - 5	Wall Mounted Fans				
	Supply & Fixing of 400 mm sweep Wall mounted fan with 3 pin Plug on the lead wire of each fan all accessories Electrical connections. Including fixing materials required.				
	Supply	Nos	62		
	Erection	Nos	62		
E - 6	Exhaust Fans				
	Supply and Installation of heavy duty Exhaust fans with Metallic blades following size sweep with gravity louvres shutters Exhaust fans with Metallic blades of following				
	a) 300mm Sweep(Crompton make Tracent Model)				
	Supply	Nos	10		
	Erection	Nos	10		
E - 7	<u>MAIN DBS / SUB DBS</u>				
	<u>Main Panel</u>				
a	Supply and fixing testing and Commissioning of Electrical Main Panel Board fixed in a floor Mounted Cubicle Panel with provision such as connector blocks, Cable chambers, Earth buses, Main Copper bus bar Powder Coated semen's gray Colour, the Panel Should be fabricated as for IE rules and as for the best engineering Practices with Required Grouting work and Material as follows Main Switch--250A MCCB (Model L&T DH 35KA Breaking Capacity) R,Y,B Indicator --3Nos (Bus bar Capacity-300A)				

	Digital Voltmeter ,Ammeter, VSS and ASS --1 set				
	160A MCCBs- 1(36KA), 125A On Load Change Over Switch-1, 63A 4Pole MCBs --5 Nos and 32/6A SPMCBs -9Nos 32 4Pole MCBs --3Nos and 63A 2 pole MCBs -- 2 Nos				
	with Panel inside arrangement and connections 3x10KVA Heavy duty L&T Capacitors Banks with suitable 32A TP MCBs for Power factor controls and Required Internal wiring etc	sets	2		
b	Supply Installation Testing and commissioning of TPN MCB Double door Distribution boards dust and vermin protected and rated for 415V, Three Phase AC supply operation including incoming MCB/ELCB as per specifications and required capacity Neutral bar and Earth terminal complete as required and installed in flush with wall including all fixing materials required. MCBs shall conform : 8828 and ELCB /RCCB shall confirm to IS : 12640 (Panel manufacturer should be CPRI approved)				
	a)Supply, installation, testing and commissioning of (Double door) with 8Way VTPN MCCB DPX DB with 160A 4Pole MCCB as incomer(36KA) and 32A TPMCBs -5 Nos, and 9 nos10/32A SPMCBs s outgoing. (for AC DB)	Nos	3		
	b) Supply, installation, testing and commissioning of (Double door) with 4Way TPN MCB DB with 63A 4Pole MCB as incomer and 12 nos10A SPMCBs s outgoing. (for LDB)	Nos	4		
	c) Supply, installation, testing and commissioning of (Double door) with 4Way TPN MCB DB with 63A 4Pole MCB as incomer and 12 nos 25/16/10A SPMCBs s outgoing. (for PDB)	Nos	2		
	d)Supply, installation, testing and commissioning of ETPN 4way TPN MCB DB (Double door) with 63A 4P MCB as incomer and 4 no of 32A DP MCBs, 4nos. 6A/32A SPMCBs as outgoing.(UPS DB)	Nos .	1		
	e)Supply, installation, testing and commissioning of 12way SPN MCB DB (Double door) with 32A DP MCB as incomer and 10nos. 6A/10A/16A SPMCBs as outgoing.(UPS DB)	Nos .	3		
	f)Supply, installation, testing and commissioning of 8 way SPN MCB DB (Double door) with 32A DP MCB as incomer and 6 nos. 6A/10A/16A SPMCBs as outgoing.(UPS DB)	Nos .	2		
	g)Supply and fixing of 32/63 A, DP MCB-1No. with enclose	Nos	5		
	h)Supply and fixing of 63A 4 Pole MCBs with MS Encloses for UPS Incoming.	Nos	5		

	i)Supply and fixing of 125A 4 Pole MCCBs(25KA) with MS Encloses for UPS Incoming./Centralized Units	Nos	4		
E-8	a). Providing and wiring for Music Broadcast with twin twisted copper wires of 23 strands, drawn in suitable PVC conduit from the Tape CD Player to the 6 Speakers, including supply and connection to 6 Nos 200mm dual cone 6 W 8 Ohm Speakers each with 8 ohms line transformer on 100V line.	No.	28		
	b). Supply and fixing of UPA 1200 Amplifier Ahuja Make. Location of the amplifier will be decided by the Bank Authorities.(Unit Specified)	No	4		
	c).Supply and fixing of DVD player make philips/ LG/ Panasonic, Location of the CD player will be decided by the Bank Authorities. (Unit Specified)	No	4		
E-9-a	Raw power Wiring and Sockets: Supply and wiring of Raw Power Points from Main DB to Individual Work Stations With required all Connections with 2runs of 2.5Sq.mm PVC wires with 1run of 1.5 Sq.mm MS Conduits for UPS out going Wirings and also Supply and fixing of 1 Nos 6A sockets with 1 Nos 6A switch of modular type with 'front plate and anodized GI box complete 'as required'. for UPS Sockets (Divide points into Primary Secondary Points)	Nos	52		
b	2 nd point	Nos	43		
E-10	Supply and fixing of 1no 16A 3pin 'sockets with 16A switch of modular type with 'front plate and anodized GI box complete 'as required'.(Raw Power)	Nos	40		
E-11-a	UPS Wiring and Sockets: Supply and wiring of UPS Points from UPS Room DB to Individual Work Stations With required all Connections with 2runs of 2.5Sq.mm PVC wires with 1run of 1.5 Sq.mm MS Conduits for UPS out going Wirings and also Supply and fixing of 3 Nos 6A sockets with 2 Nos 6A switch of modular type with 'front plate and anodized GI box complete 'as required'. for UPS Sockets. (UPS -1 connection table / counter no.1,3,5 & 7 and UPS -2 table no. 2,4,6 & 8 etc, and network rack & manager 2 UPS points from UPS-1 & UPS-2. (Divide Them into Primary & Secondary items)	Nos	65		
b	2 nd point	Nos	56		
E-12	Supply and fixing of 3 Nos 16A sockets with 1 Nos 16A switch of modular type with 'front plate and anodized GI box complete 'as required'. for UPS Sockets	Nos	30		

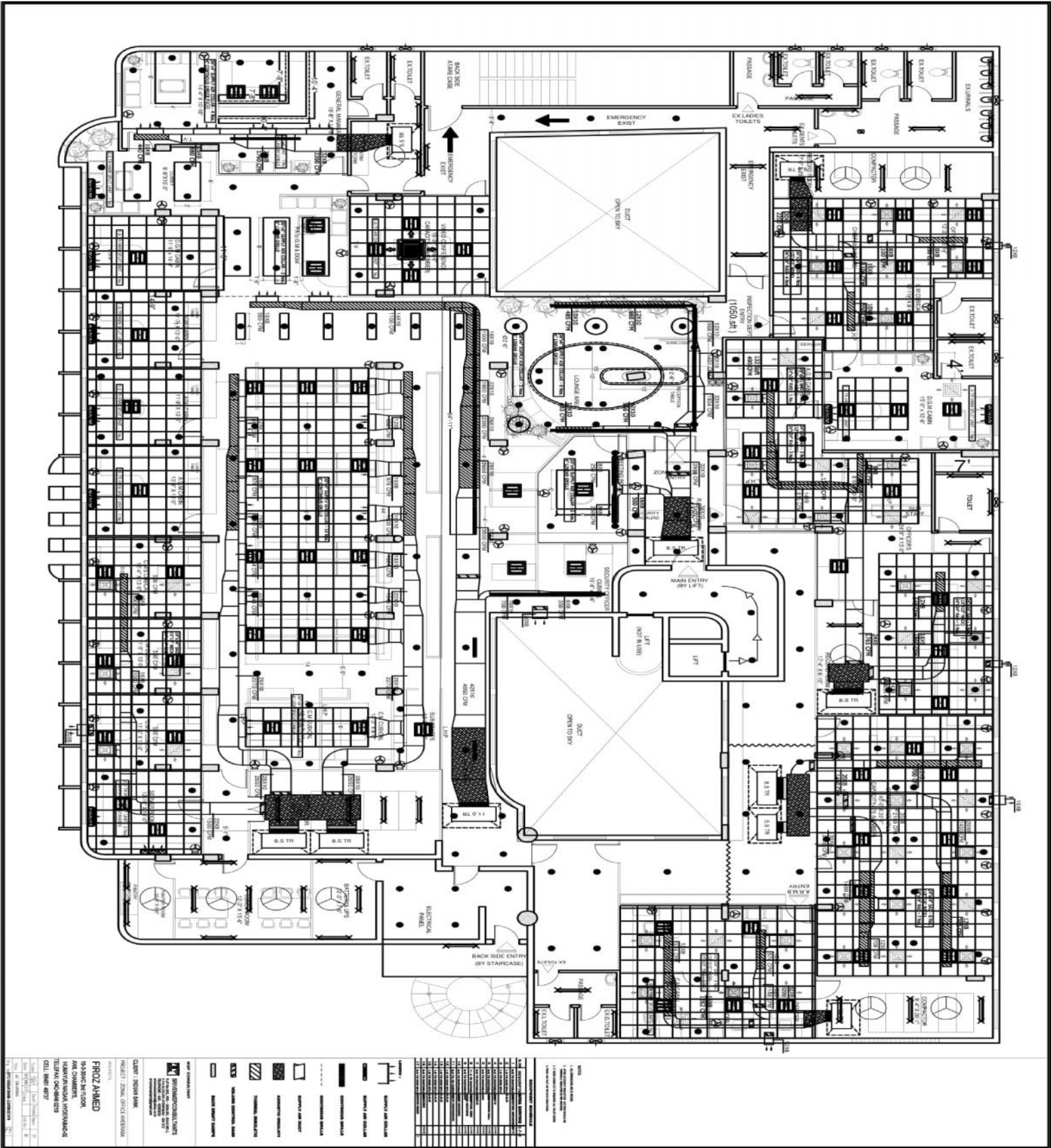
E-13	Supply installation testing and commissioning of AC Units With 2x4Sqmm+2.5Sqmm Copper Flexible Wire With Conduit From Main DB to AC Units including Legrand Make 20A Metal Clad Socket with 25/32A SP MCB set(Like Metal Clad Socket+Wiring From Db to AC Box to Stabilizer to AC Units)	No	13		
E-13a	(i) Supply installation testing and commissioning of AC Units With 4x6Sqmm+1x4 Sqmm Copper Flexible Wire With Conduit From Main DB to AC Units including Legrand Make 32A 4 pole Enclose with 32A 4P MCB set(Like 4 Pole MCB Set +Wiring From DB to 4 Pole MCB to AC Units as for Requirements indoor/outdoor Supply)	No	1		
	(ii) Supply installation testing and commissioning of AC Units With 4x10Sqmm+2x6Sqmm Copper Flexible Wire With Conduit From Main DB to AC Units to outdoor units. Requirements indoor/outdoor Supply)	Mts	120		
E-14	Supply and erecting of approved make telephone RJ 11Jack for telephone with 2 pair .5mm Thick Telephone cable including pvc conduit with required all materials (RJ-11 Jack+ 2 pair Cable)	Nos	83		
	Untel Mothered Cable Having				
E-14a	50 pair Telephone cable	Rmt	70		
E-14b	20 pair Telephone cable	Rmt	200		
E-15	Supply and fixing of 50 Pair Crone Box with 30 Pair connectors and required all connections.	Nos .	1		
E-15a	Supply and fixing of 20 Pair Crone Box with 10 Pair connectors and required all connections.	Nos .	3		
E-16	MV Cables				
	Supply, laying and commissioning of following size 1.1KVgrade PVC insulated armoured aluminum conductor underground cable, in built up cable trench/ 2" MS pipe or on cable tray with all installation materials. When the cable is to be laid in ground, the same shall be laid at a depth of 750mm below ground level including excavation and refilling of earth after cables are laid, providing protection with sand and bricks at sides and topand cable route markers at 'every 15mtr. interval and also atthe turnings. The cable shall conform to IS 1554/ Part I.Cable protected in 2" Dia G.I Pipe10' long at the pole (correct measurement should be taken by the contractor before procuring the cable.				
	a) 3.5C X 95 Sq.mm	Rmt	80		
	b) 3.5C X 50 Sq.mm	Rmt	136		
	c) 4C X 16 Sq.mm	Rmt	130		

E-17	Providing Indoor ordinary end terminations for the cable specified above with compression type steel gland, Bi-metallic lugs using crimping tool,Insulation tape,Identification tags etc., including end termination and Earthing of Gland with 8SWG 'GI Wire				
	a) 3.5C X 95/50 Sq.mm	No	16		
	b) 3.5C X 16/25 Sq.mm	No	12		
E-18	Earthing				
	a) Providing G.I. Earth station, with 40mm dia 2500mm longGI pipe including construction of brick pedestal, providing meshed funnel,CI cover and other civil Engineering works,spreading a homogenous mixture of salt, charcoal aroundthe pipe etc, completely as per IS 3043, 1987 or latest revision.	No	5		
	b) Providing Copper Earth station, with 600X600X3.15mm Copper plate at 2500mm depth including construction of brick pedestal, providing meshed funnel,CI cover and other civil Engineering works, spreading a homogenous mixture of salt,charcoal around the pipe etc,completely as per IS3043,1987 or latest revision.	No	5		
	c) Supply and laying of following size strips including including all necessary inter connections with earth station and equipments.				
	i) 8 SWG Copper wire	Rmt	256		
	ii) 25x3mm Gi Strips double Runs	Rmt	135		
	iii) 25x6mm Gi Strips double Runs	Rmt	80		
	iv)25Sqmm Copper Multi Stand Fluxible cable for UPS Input	Rmt	100		
E-19	<u>LAN Cable(All Items CAT -6)</u>				
a	Supply and Laying of 4Pair CAT-6 LAN Cable with suitable PVC Conduite and Junction boxes with etc.	Pts	103		
b	Supply and fixing of CAT-6 Information out letsSystimax/Amps/D Link	Set	103		
c	Supply of Patch Cards 3' (Factory Crimping)	Set	103		
d	Supply of Patch Cards 7' (Factory Crimping)	Set	103		
e	Supply and fixing of cat-6 , 24 port Jack panel (Systimax/amp)	Set	7		

PRICE BID

f	Supply and fixing of 9U Rack enclosure with accries likeSelf, Power manager, Cable Manager, Hard Ware etc.	Set	6		
g	Supply of Netrack 42U Rack Frame/600X1000 /Steel, Side Panels-2 Nos, Cassters set of 4/Tp3(Set of 4)-1 set, Levellers (Set of 4)-1 set, Shelf/1000-2 Nos, Shelf Keyboard/19"/Rty-1 Nos, Power Dist Unit/vert/12Sockets/5-16A with 32A MCb-1 Nos, Equipements Mounting Fasteners(Pack of 20)- 2Nos	Set	1		
h	Supply and fixing of 24 port 100/1000 switch,.	Set	4		
20	Removing of Exhisting Electrical Items and Temporary Connections.		LS		
*	TOTAL AMOUNT FOR Zonal Office, ALL ELECTRICAL WORKS Rs :				

CONTRACTOR SIGNATURE



PROPOSED INTERIOR FURNISHING WORKS
FOR INDIAN BANK, ZONAL OFFICE,
HIMAYATH NAGAR, HYDERABAD

Detail BOQ For All AC
Works (Zonal Office)

BILL OF QUANTITIES FOR INDIAN BANK- ZONAL OFFICE - HYDERABAD

Sl. No.	Description	Unit	Total Qty	Rate	Amount
1	Supply,Installation,Testing and commissioning of the following Ductable Split Air conditioners fitted with scroll compressor , aluminum finned air cooled condensers, condenser fans,expansion valve, Evaporator with cooling coils and blower section				
a	11.0 TR (Multi Compress) (for Zonal Office)	Nos	1		
b	8.5 TR (Conference Hall)	Nos	5		
c	5.5 TR (G.M cabin)	Nos	3		
2	Harddrawn copper piping with 9 mm thick Nitrile rubber insulation including all necessary fittings between indoor and out door air cooled condensers of the following sizes.				
a	Suction line for 8.5 TR Ductable Machine as per Standards	Rmt	16		
b	Liquid line for 8.5 TR Ductable Machine as per Standards	Rmt	16		
2	Supply, Installation, testing and commissioning of the following Cordless 4Way Cassette airconditioners				
a	3.0 TR	Nos	1		
2a	Soft drawn copper piping with 9 mm thick Nitrile rubber insulation including all necessary fittings between indoor and out door air cooled condensers of the following sizes.				
a	Suction line for 3.0 TR HWM Cassette unit	Rmt	15		
b	Liquid line for 3.0 TR HWM Cassette unit	Rmt	15		

3	Supply,Installation,Testing and commissioning of the following Hi-wall Split Cordless Air conditioners fitted Reciprocating/Rotary compressors with 3 star rating machines with stand				
a	2.0 TR with 5.0 KVA Stabiliser (LOBBY)	Nos	1		
b	1.5 TR with 5.0 KVA Stabiliser (DGM / AGM)	Nos	6		
c	1 TR with 5.0 KVA Stabiliser	Nos	2		
4	Harddrawn copper piping with 9 mm thick Nitrile rubber insulation including all necessary fittings between indoor and out door air cooled condensers of the following sizes.				
a	Suction line for 11.0 TR Ductable Machine as per Standards	Rmt	25		
b	Liquid line for 11.0 TR Ductable Machine as per Standards	Rmt	25		
a	Suction line for 8.5 TR Ductable Machine as per Standards	Rmt	76		
b	Liquid line for 8.5 TR Ductable Machine as per Standards	Rmt	76		
a	Suction line for 5.5 TR Ductable Machine as per Standards	Rmt	48		
b	Liquid line for 5.5 TR Ductable Machine as per Standards	Rmt	48		
5	Soft drawn copper piping with 9 mm thick Nitrile rubber insulation including all necessary fittings between indoor and out door air cooled condensers of the following sizes.				
a	Suction line for 2.0 TR HWM Split unit	Rmt	50		
b	Liquid line for 2.0 TR HWM Split unit	Rmt	50		
a	Suction line for 1.5 TR HWM Split unit	Rmt	55		
b	Liquid line for 1.5 TR HWM Split unit	Rmt	55		
6	GSS ducting complete with angel iron flanges, high tech supports (Vanes if reuired) as per IS 655 & Class VIII specifications				
a	22 Gauge	Sqm	115		

b	24 Gauge	Sqm	430		
7	Fire retardent Canvass connections with 150 mm Zip	Nos	9		
8	Accoustic insulation with 12 mm thk. Resin boned fiber glass of density 48 kg/ cum covered with RP tissue and 28 G AL perforated sheet	Sqm	85		
9	Thermal insulation 9mm thick class "O" nitrile rubber	Sqm	125		
10	Extruded aluminum powder coated continous grills	Sqm	8		
11	Supply and installation Powder coated, extruded aluminium, removable centre core type diffusers for supply/ return air. All diffusers should be of 375x375 / 300x300 neck size and 595x595 OTO suitable for 600x600 false ceiling grid.	Nos	43		
12	MS Powder coated collar dampers	Sqm	7.75		
13	Supply, installation, testing and commissioning of backdraft damper	Sqm	2		
14	GI Volume control dampers made out of 18G GI sheets	Sqm	2.15		
15	Insulated Condensate drain pipe using PVC pipe of the following sizes				
a	32 mm Dia	Rmt	100		
b	25 mm Dia	Rmt	120		
16	Electrical cabling Interconnecting between indoor unit and outdoor unit of the following sizes				
a	3c X2.5 sqmm	Rmt	310		
c	3c X1.5 sqmm	Rmt	230		
17	Fresh air package consists GI volume control damper and wiremesh.	Nos	5		
18	Minor Civil works and Condenser supports & Wall openings	Lot	1		

19	Minor Civil works and Condenser supports & Wall openings	Lot	3		
20	Removing of Existing AC Duct.		LS		
*	TOTAL AMOUNT FOR Zonal Office AC Work RS:				
	Approved Makes :				
1	Ductable / cassette / Split Units : Carrier / Bluestar / Voltas				
2	GI Sheets : Tata / Jindal				
3	Fiberglass : Uptwiga / Kimmco				
4	Grills / Diffusers /dampers : Systemair /Airmaster				
5	PVC Pipe : Sudhakar /Ashirwad				
6	Exhaust Fans : Systemair /Nicotra /Kruger / Osterberg				

CONTRACTOR SIGNATURE

PROPOSED INTERIOR FURNISHING WORKS
FOR INDIAN BANK, ZONAL OFFICE,
HIMAYATH NAGAR, HYDERABAD

Detail BOQ For All CIVIL
Works (Zonal Office)

S.No.	Item	Qty.	Unit	Rate in Rs.	Amount (Rs.P)
A	WORKS: Floor tiles, Toilet Plumbing, ceramic Tiling, pipeing works .				
1	Providing and laying Brick masanory of 230mm (4 1/2")thk using best locally available, well burnt bricks having compressive strength not less than 35kgs per sq.mt in C.M(1:6) as specified including racking joints, scaffolding, curing and all materials and labour complete at all heights for walls.	120.00	Sft		
2	Providing Internal Plastering 16mm thick in two coats to internal walls and internal surface of R.C.C. members with base coat of 12mm thick in C.M (1:5) and top coat of 4mm thick in C.M (1:3) with dubara smooth finishing, the sand used shall be of smooth finish without silt content to correct line level, plane and plumb, including cost and conveyance of all materials like cement, sand, water etc., to site, and all operational, incidental charges on materials and all labour charges, for mixing mortar, finishing, scaffolding, lift charges, curing, including etc.,at any height, complete.	240.00	Sft.		
3	Dadoing: Providing and laying glazed tiles dadoing to walls with first quality of ivory 6 to 8mm thick Ceramic tiles of sizes 8" x 8" or 8"x 12" or 12" x12" set in <u>6mm thick needs cement plaster over 12mm thick cement plaster 1:6</u> including jointing the joints with white cement slurry mixed with maching pigments, cleaning and leaving / making necessary holes for sanitary connections complete in wash area and toilets.The joints of tiles must be fill with grouting mix with suitable colour pigment- somany / kajaria / johnson or approved make., including cost and conveyance of all materials like cement, sand, water etc., to site, and all operational, incidental charges on materials and all labour charges, for mixing mortar, finishing, scaffolding, lift charges, curing, including etc. Tile cost not less than Rs.42-00 per sft.	1,480.00	Sft		

4	Cermic Flooring: Supply and fixing of with ceramic tiles of approved make and colour (not less than 5mm thick) of 1st quality 300 x 300mm of size and 6mm thick needs cement plaster over 20mm thick cement plaster 1:6 over CC surface, including jointing the joints with white cement slurry mixed with matching pigments, cleaning and leaving / making necessary holes for sanitary connections complete in wash area and toilets. The joints of tiles must be filled with grouting mix with suitable colour pigment-somany / kajaria / johnson or approved make., including cost and conveyance of all materials like cement, sand, water etc., to site, and all operational, incidental charges on materials and all labour charges, for mixing mortar, finishing, scaffolding, lift charges, curing, including etc. Tile cost not less than Rs.42-00 per sft.	900.00	Sft		
5	Providing and fixing white vitreous Orissa pan size of 580 x 440mm of approved make confirming to IS. 2556 (part III) with 100 mm sand cast iron "P" or flushing including 10 lit low level plastic flushing cistern of approved make confirming to IS. 7231 with all internal fittings, C.I. brackets, 32 mm dia CP. long flush bend, 15 mm dia 450 mm length PVC connector 15 mm dia CP. angle stop cock etc., cutting and making good the walls and floors wherever required, complete as directed by the Engineer in charge	1.00	Nos		
6	Chipping of old /existing tiles/ plastering/ masonry on the walls/ floor and removing debris from the site, with all materials and labour, complete, etc..	1,975.00	Sft.		
7	Rearrange the plumbing for all toilets including taps etc.	11.00	Nos		
8	Cermic Tiles: Supply and fixing of with ceramic tiles for walls of approved make and colour (not less than 5mm thick) of 1st quality 300 x 300mm of size and 6mm thick needs cement plaster over 20mm thick cement plaster 1:6 over CC surface, including jointing the joints with white cement slurry mixed with matching pigments, cleaning and leaving / making necessary holes for sanitary connections complete in wash area and toilets. The joints of tiles must be filled with grouting mix with suitable colour pigment-somany / kajaria / johnson or approved make., including cost and conveyance of all materials like cement, sand, water etc., to site, and all operational, incidental charges on materials and all labour charges, for mixing mortar, finishing, scaffolding, lift charges, curing, including etc. Tile cost not less than Rs.42-00 per sft.	1,075.00	Sft		

9	Providing and fixing rectangular frameless polished edge Mirror size 600x450x5 mm thick of approved make having four holes with C.P.screws and eye lid with asbestos sheet ground Belgium plate glass and Indian silvering fixed to T.W.blocks embedded in wall in.C.M.complete in all aspects as directed.	6.00	EACH		
10	Providing and fixing coloured vitreous ware recessed type Soap Dish 15x15cms size approved Indian make fixed in wall in wall in cement mortar complete in all respects as directed.	6.00	EACH		
11	Supply and fixing of CP brass Towel Ring of 150mm dia, fixed to wall,with CP screws, etc complete as directed by engineers incharge. Make:Jaquar:1121	6.00	EACH		
12	Supply and laying CPVC pipes for Cold With malleable specials such as Tees, elbows, checknuts, unions, bushes, etc., as per ASTM - F493 solvent cement including fixing in walls ceiling, floors include for necessary excavation in all sorts of soils, chasing in the walls etc., refilling consolidation with the excavated earth & making bores in walls ceiling etc., and making good the chased surface in cement mortar and complete. When making a transition connection use metal threads fittings.				
	a) 1/2" Dia.	30.00	RMT		
	b) 3/4"Dia	20.00	RMT		
13	Supply and fixing of offwhite colour vitreous Flat Back Urinal with CP spreader nozzle and CP waste coupling with CP waste pipe concealed in wall up to floor trap including supply and fixing of 15mm brass CP angle stop cock with 15mm PVC inlet connection to the spreader nozzle 150 mm thick PCC flat form in brick jelly concrete(1:3:6) mix plastered with C.M(1:4) and scratched to receive glazed tile flooring with necessary fixing materials like J-brackets,screws for fixing vitreous ware and T.W plugs etc.and directed. (HSW 60005,JAQ 51077)	7.00	EACH		
14	Supply and fixing CP 20mm Dia. Concealed Stop Cock (for Urinal Manual Flushing purpose) JAQ 071	7.00	EACH		

15	Supply and fixing of offwhite colour vitreous Flat Back Full Stall Urinal with CP spreader nozzle and CP waste coupling with CP waste pipe concealed in wall up to floor trap including supply and fixing of 15mm brass CP angle stop cock with 15mm PVC inlet connection to the spreader nozzle 150 mm thick PCC flat form in brick jelly concrete(1:3:6) mix plastered with C.M(1:4) and scratched to receive glazed tile flooring with necessary fixing materials like J-brackets,screws for fixing vitreous ware and T.W plugs etc.and directed. (HSW 60005,JAQ 51077)	3.00	EACH		
16	Supply & fixing Wash Basin of 55cm x 40cm single hole in offwhite colour vitreous china ware supported on pair of C.I.brackets and enamel painted 32mm diaa brass C.P.waste coupling with CP brass bottle trap of approved design with one CP brass 15mm dia standered head heavy type pillar cock at top and backnut,15mm dia rigid PVC inlet with 15mm dia CP brass angle stop cock,CP brass coupling and thimble and fixing Of PVC connection from bottle trap to Nahani trap etc complete as directed by engineers incharge. (Hindware/ jaguar)	10.00	SET		
17	Internal Flush Doors(Toilets): Providing and fixing of medium quality teak wood frame of size 100 x 75mm using factory made solid core flush shutter with kiln seasoned wooden reapers, 32mm thick plywood bonded with phenol formaldehyde synthetic resin adhesive BWP grade including cost of material labour, transport, fixing and all other incidental charges etc.,and providing acrylic sheet(2mm) inside,including supplying and fixing of neccessary powder coated alluminium hardware fittings like aldrops,tower bolts, S.S hinges etc.and painting the frame and shutter with 2 coats of wooden primar of approved make and 3 coats of first quality synthetic enamel paint clearing the shutter, frame and harware fitting after painting.	238.00	Sft		
	FIXTURES & FITTINGS.				
18	Supply, fixing and testing of ivory Colour glazed Floor Mounted European Water Closet(HSW20024/Parryware0216)) with 'p' trap along with seat cover,angle valve,Cistern Tank,P.V.C connection, extension nipples etc complete as directed by engineers incharge.				
	a). Wester closet	10.00	SET		
19	Supply & fixing of Chrome Plated Health Faucet and 1m flexible tube with wall hook etc complete as directed. by engineers incharge.	10.00	EACH		
	JAQUAR : 1151				

20	Providing and fixing C.P.brass twin peg (coat hook) fixed to door shutter with necessary C.P. brass screws complete as directed. (Sample to be approved by the Bank/Architects).	12.00	EACH		
21	Water proof treatment: Providing cement based waterproofing system laying impervious coat over prepared surface of RCC roof slab with bonding coat with brush bond of Fosroc/Hyguard of Roffe or equivalent approved make as per manufacturers specifications over the floor and providing a layer of screed concrete in 1:2:4 proportion using 12mm and down graded dust free hard granite machine crushed aggregate mixed with liquid wter proofing compound of conplast421-ic/Hyproof of FOSROC/ROFFE as per manufacturer's specifications and with MD Graded FIBRILLATED POLYPROPYLENE FIBERS of Reliance?modi approved make @0.9kg.per one Cu.Mt.of concrete laid to proper slopes and levels for free flow of rain water and top finished with 12mm thick cement plaster in CM(1:3) over the screed concrete with false lines at 300mmx300mm grid are intervals as directed. The average thick ness of the screed should be 70mm The screed concrete should be compacted with mechanical surface vibrator and levelled and also top plaster should be finished with trowel.The rate should include the cost of fibre mesh.The surface should be cured by ponding for minium 21days.complete as directed.using	900.00	Sft		
22	Dismantiling of existing brick wall (4.5"/9") thk and removing debries from the site, with all materials and labour complete, etc..	1,595.00	Sft		
23	Vitrified Flooring : Providing & laying of vitrified flooring with first quality of approved shade/ colour/ make vitrified tiles of size 605mmx605mm (cost of tile should not be less than Rs.65 per Sft.) laid on 20mm thk cement grouting mortar / use adhivise past to fix tiles for any exhisting hard flooring. This will be including a floating coat of white cement grouting to fill the joints with laticrete of matching colour.	11,751.00	Sft		
	For tile fixing adhesives and epoxy grouts of make laticrete 1 balendura are to be used. Rate includes removing of the loose / damaged existing tiles, preparing the surface to level and laying tiles of approved sizes to the pattern given, including curing & acid wash, cost of all material & labour. The finished product has to be certified by the manufacturers with out which payment will be with held. complete as diected by Bank / Architect.				

24	Supply, fixing and testing of CI 100mm Anti Cockroch Nahani trap with 'P' or 'S' type trap, with CP grating heavy quality hopper type and 100mm dia outlet with necessary cement concrete chamber.	12.00	EACH		
25	Supply and fixing C.I.bell mouth or nahani trap 100mm inlet and 50mm and 80mmdia outlet heavy quality with proper deep water seal approved make in cement concrete bedding including necessary brick chamber upto floor level with 125mm dia heavy C.P.brass circular perforate grating with ring including cutting holes in making good the same etc.complete in all respects as directed.	12.00	EACH		
26	Providing PLUMBING INSTALLATION WORKS, labour and material if nessesary for all toilets for (1 Add- toilets), such as additional pipes, gate valves, nahni traps etc., complete., All as directed by the Architect / Bank -in-charge.		L/S		
27	Removing of Cermic Flooring / Wall Tiles and debries from the site	1,930.00	Sft		
*	TOTAL for CIVIL works (A):				
'	TOTAL AMOUNT FOR ALL (INT, ELEC, AC & CIVIL) WORK:				

CONTRACTOR SIGNATURE

**	TOTAL AMOUNT FOR				
	GST Percentage of Above Total Amount:	18%			
	GST No :				
**	GRAND TOTAL AMOUNT With GST:				
	Rupee				

FA:

CONTRACTOR SIGNATURE