

अंचल कार्यालय : सतना द्वितीय तल, इंडियन बैंक भवन, जयस्तंभ चौक, सतना ४८५००१ दूरभास : ०७६७२-४१४४०७	 इंडियन बैंक Indian Bank  इलाहाबाद ALLAHABAD •BANKING THAT'S # TWICE AS GOOD•	ZONAL OFFICE : SATNA 2nd Floor, Indian Bank Building, Jai Stambh Chowk, Satna- 485001 Phone : 07672-414407
संपत्ति विभाग	Email : zosatna@indianbank.co.in	Property Department

INVITATION OF QUOTATIONS FOR FURNISHING AND ELECTRICAL WORKS

Indian bank, Zonal Office, Satna invites quotations in the prescribed format for furnishing and electrical work at the alternate premises of our **Rampur Baghelan branch (Distt. Satna)** from the contractors who are already empanelled with our Bank. Tenders/quotations are non transferable and the formats are available with this notice and at our Zonal Office, Satna:

Address:-
Indian Bank,
Zonal Office Satna,
Indian Bank building,
Jaistamb Chowk,
Satna-485001, Madhya Pradesh.

The quotations will be available between 11:00am to 6:00pm from **11.06.2021 to 03.07.2021** and at our Bank's website www.indianbank.in also. The duly completed "quotations/forms" should be submitted in sealed covers super-scribing on top as **"Quotation for furnishing and electrical works at Rampur Baghelan Branch (Distt. Satna)"** and addressed to the Zonal Manager, Indian Bank, Zonal Office, Satna at the above stated address latest by **03.07.2021 uptill 6:00pm**. The quotations will be opened on **next working day at 3:00pm**. However, Indian Bank reserves the right to accept or reject in part or full any or all the bids without assigning any reasons whatsoever.

Zonal Manager

QUTATION OF INTERIOR & ELECTRICAL WORK AT RAMPUR BAGHELAN BRANCH & ATM FOR INDIAN BANK		
S.No.	Particular	Amount
1	Interior work of Branch	
2	Furniture of Branch	
3	Electrical work of Branch	
4	TOTAL AMOUNT (EXCLUDING GST) IN RS.	
5	GST RATE (IN %)	
6	GST AMOUNT IN RS.	
7	TOTAL AMOUNT (INCLUSIVE OF GST) IN RS. (4+6)	

**QUOTATION FOR INTERIOR & ELECTRICAL WORKS AT RAMPUR BAGHELAN
BRANCH FOR INDIAN BANK**

1. FURNISHING WORK

S. No.	PARTICULARS	UNIT	QTY	RATE	AMOUNT
1a	Gypsum Ceiling:- Providing and fixing false ceiling as per approved plan with Gypsum board (India Gypsum, gyproc, usg & Ceiling of equivalent) 12 mm thick on frame consisting of main and cross runners of GI section of 2.5" size @ 2.85 kg/12 feet and 1.75" @ 2.9 Kg/12 feet connected with screws to form a grid of not more than 2'x2'. Opening for lights and fans to be provided. The ceiling height shall not be less than 9'6" from the floor. The rate includes all extra frame work required to hold the concealed light fixtures, jointing with compound and fibre tape 3mm gypsum punning/ plastering and 3 coats of Asian/Nerolac Acrylic emulsion paint.(With patta)&(White colour shed)	Sqft	270.00		
1b	Armstrong Ceiling: Providing, fabrication and fixing of false ceiling at all heights of 600 mm x 600 mm x 12 mm armstrong mineral fibre ceiling tiles of type BIZA RH - 90 laid on armstrong prelude XL exposed grid systems with 9 mm wide T Section flanges colour white. The framework comprise of main runner spaced at 1200 mm centers 1200 mm maximum centers. Hangres (GI wire) to be fixed by approved roof plug and screws etc. The last hanger at the end of each main runner should not be greater than 450 from the adjacent wall. Flush fitting 1200 mm long cross tees (with double stitching) to be interlocked between main runners at 600 mm enter from 1200 x 600 mm modules. Cut cross tees longer than 600 mm to be supported independently 600 mm x 600 mm modules to be formed by fittings 600 mm long flush fitting cross tees centrally between the 1200 mm cross tees. Perimeter trim to be armstrong wall angle secured to walls at 450 mm maximum centers. (Armstrong, gyproc, USG, Ceiling or equivalent)& (White colour)	Sqft	810.00		
2	Hight Partition-Full / Low Height Partition (Solid) with 8mm glass Upto ht. of 3'6" or 8'-0" ft. in Banking hall & UPS room laminated and inclusive of door.				
a	Sal wood/hollock or Equivalent frame of section 2.5"x1.5" fixed in position with 2.5" to 3" long steel neetle fold screw. The vertical and horizontal members being placed at 2' c/c as per site condition as directed.				
b	Panel for solid partition fixing 8 mm IS CODE 710- water proof plywood, anti termite, borer proof plywood of century, Duro or Alpine make on both the sides of frame work with fevicol SH and headless nails of 17 nos of 1.25" length and securing the cover with 1.5" long steel nettled fold screw. Making the plywood surface level before fixing the laminate/veneer.				
c	1 mm th laminate/ mica fixing on inside of panel with 1.5 mm th. Groove in the panel as per the design with provision of the openings in the panel for switch boards, box and cuts in frame for carrying conduits if necessary, and fixing 1.0 mm laminate on the outside face of shade and colour a per AB colour scheme given in the tender specification with 8mm glass to be given in the design. The open edge are to be blocked by teak wood bead of required size and design.(Formica, euro lam, green lame, merino)	Sqft	210.00		
3	Full height Partition – Supplying and erecting full height partition (upto false ceiling height) as per drawing and conforming to the following specifications :				

	basic frame work : sal wood sections, treated with two coats of wood preservatives, 50 mm wide x 50 mm (minimum) at maximum 600 mm horizontal or vertical spacing as per site conditions. Vertical members shall be suitably, anchored and at ceiling level to ensure rigidity. Exposed frame members in the glazed portions shall have wider spacing (approx. 1800 mm. clear) as per instructions. Exposed members shall be finished with 1.00 mm thick laminate sheet of same or combination shades, over 6 mm mm thick (BWP-IS COE 710) grade plywood facing including 4x6 mm grooves at locations as per instruction (Archid ply,duro ply, century ply, green ply)				
	skin membrane : (solid portion upto ceiling from floor level and from 2100 mm to false ceiling with 6 mm thick BWR grade plywood on each face, with grooves formed as per drawings/ instructions.				
	finishing : 1.0 mm thick laminate sheet of same or combination shades as per instructions.				
	skirting : 100 mm high x 12 mm thick polished teak wood skirting on both faces, with NC lacquer in mat finish				
	Quoted rates shall include all necessary materials accessories and labor and also allow provisions for electrical /telephone/computer wiring conduits and switch boxes etc. (Materials for wiring conduits and switch boxes shall be separately paid for.)	Sqft	90.00		
4	Flap Door - Providing and fixing of door fixtures.				
	a) Flap Door closer	No.	1		
5	Cheque drop box -Providing and fixing cheque drop box of size 450mm 750mmx300 mm with a slit opening of 10mmx150 mm and openable shutter of 250x262mm size with glass fixed above 1.5 m above ground level. All exposed surface to be pasted with matching laminate and inside with .1mm liner mica. The cost includes that of necessary fittings.	No.	1		
6	Customer writing table -Providing and fixing customer writing table 900mm circular made of 12 mm thplyboard supported on pedestal with necessary fixtures. The top to be provided with shelves for keeping forms/slips etc. all exposed surface to be paste with mica to match the ambience.	No.	1		
7	Suggestion box -Providing and fixing standing free suggestion box made of plyboard 12mm thick 450mm long x 300mm deep x 900 mm high. The box shall have openable shutter with glass and all necessary fixtures.	No.	1		
8	Notice board - Providing and fixing notice board in ply board of 6mm fixed on a frame of 50mmx25mm well seasoned wood polished and top fixed with bead. 12mm thick soft board clad with fabric of matching colour and shade complete with all fixtures necessary as required.	Sqft	16.00		
9	Panel box -Providing and fixing of panel box with 12mm plyboard shutter with louver and the top pasted with mica of matching colour complete.	Sqft	16.00		
10	Frosted Film -Providing & pasting frosted film (3M, Garware make) on glass work partition of entrance as required as directed by the consultant/Architect.	Sqft	20.00		
11	Logo -Providing & pasting frosted film (3M, Garware make) logo on entrance door as directed by the Consultant.	No.	1		

12	fixed glazing : Providing and fixing 10 mm thick glass door with 6" wide wooden frame and fixed glazing with 10 mm thick glass including door spring, handel, etc all complete.				
13	Wall Panelling with laminate finish Providing and fixing in position ply panelling with hardwood framing of approximate 2" x 1.5" section at 2' 0" c/c both ways, 12 mm plywood with 1.0 mm laminate (Royale Touch,Sunmica, Formica) in scheme as per Bank colors complete as directed.	Sqft	125.00		
14	Shutter box Providing wooden boxing comprising of 2" X 2" wood frame work. 12mm marine plywood trap with magnetic catch. Entire boxing finished with enamel paint of approved shade.(With ATM)	Sqft	215.00		
15	Front Glazed partition with Door Providing & fixing fully 12mm thickToughened glass partition with power coated Aluminium section (Jindal make on all four sides till 7'-0" it will be fully fixed partition till top height with floors spring,brush finished steel handles hinges, doors handle lock etc. size :- 4'x7'. Providing and fixing of hydraulic floor machine in the entrance doors make : Hyper, Amber , shakti . Providing and fixing of mortise lock with handle in the UPS room door make : Doorset , Godrej . Providing and fixing SS handle at the entrance door. Pasting of film on the front glass.	Sqft	66.50		
TOTAL AMOUNT					

2. FURNITURE, PARTITION AND CABINETS

S. No.	PARTICULARS	UNIT	QTY	RATE	AMOUNT
	Providing and fabrication of table (with keyboard tray) having table body of 18mm, 12mm & 6mm thk plywood and table top & shutters of 19mm thk block board. The drawer unit must have one drawer mounted on drawer slider and shuttered shelf under it. A readymade metallic keyboard tray must be fixed under the table top. A round, PVC cable crossing socket (cable manager) must be fixed on the table top for power/data cable crossing. A foot rest, made of 19mm thk block board must be fixed and a CPU carrier, on the footrest level must be fixed. The table top and all other exposed surfaces must be covered with 1.0mm thk laminate. All inside/hidden surfaces must be finished with one coat of primer and three coats of synthetic enamel paint. All the edges and corners must be protected with 6mm thk plain teak wood bead. 4" high skirting				
	must be fixed on exposed surfaces. All the teak wood must be finished with 3 coats of synthetics paint. Automatic locks and handles must be fixed in drawers & shutters.				
1	BM TABLE Table Size - 1950 mm x900 mm x750 mm Side Unit Size - 1050 mm x 450 mm x 750 mm with 12mm table top glass.	No.	1		
2	OFFICER TABLE & SIDE UNIT Table Size - 1500 mm x 750 mm x750 mm Size - 900 mm x 450 mm x 750 mm	No.	0		
3	FRONT OFFICER'S TABLE WITH SIDE UNIT Table Size - 1200 mm x750 mm x750 mm with front and partation with customer side glass 12mm	No.	4.00		
4	SERVER OFFICER'S TABLE TOP UNIT Table Size - 1200 mm x750 mm x750 mm with front and partation with customer side glass 12mm	No.	4.00		

4	Low Height / Full Height Cabinet: Providing and fabrication of 3' / 7' high and 1'6" deep file/storage cabinet with cabinet body of 18mm, 12mm & 6mm thk plywood. One row of drawers (mounted on drawer slider) must be there on the cabinet and shuttered shelf under the drawer must be provided. The shutters of the shelves must be of 19mm thk block board. All the external exposed surfaces of the cabinet must be covered with 1.0mm thk laminate. All the internal/hidden surfaces must be finished with one coat of primer and three coats of synthetic				
	enamel paint of matching colour of the laminate. All the edges/corners of the plywood must be protected with 6mm thk plain teak wood bead. 4" high skirting must be fixed on exposed surfaces. All the exposed teak wood surfaces must be finished with three coats of melamine polish. Multipurpose lock and handle must be fixed on shutters and drawers.				
a	low height - 750 mm/900mm Height (Manager cabin)	Sqft	85		
b	Full height-2100mm Height (Store room)	Sqft	0.00		
5	Cash counter: Providing and fixing of Cash cabin with 12mm front glass railing providing and erecting in position cash counter /cash work station of approx . Size 1500mm(L)X750MM(w)X750MM(H) inclusive of 1500mm high ,375mm wide customer writing top & drop down flap box 600mmx300mm with rear partition including door 750x2250mm made of 18mm thk.commercial ply with 1mm thk. laminate & 12mm thk. glass on the top of the counter & 8mm thk. glass on the side partition MS power coated ke board try ,cashier drawer of commercial ply etc complete. partition ht. up to 7' with back side glazed door and and top with aluminium grill side wall partition 8mm thk. glass as per drawing inclose and as per instruction of the architect.	No.	1		
6	CHAIRS:- (Maroon colour & Godrej, wipro,featherlite or equivalent)				
A	B.M.CHAIR Supplying & installation at site manager's chair of godrej, featherlite make godrage spyder 9601 AX or featherlite HBGS	No.	1		
B	Officer chairs / Staff chairs Supplying at site officers/ staff chair of godrej, featherlite make godrage carbon black V-05 or featherlite HBGS "B"	No.	6		
C	Visitors chairs Supplying at site visitors chair of godrej 5612 TX or featherlite VA sledge based	No.	4		
D	Lounge chairs in banking hall Supplying at site lounge seating chair in banking hall of godrej, WIPRO, FEATHERLITE or Equivalent 3 seater premium lounge L43XX or Featherlite Burney Cushioned - 7A	No.	2		
				TOTAL	

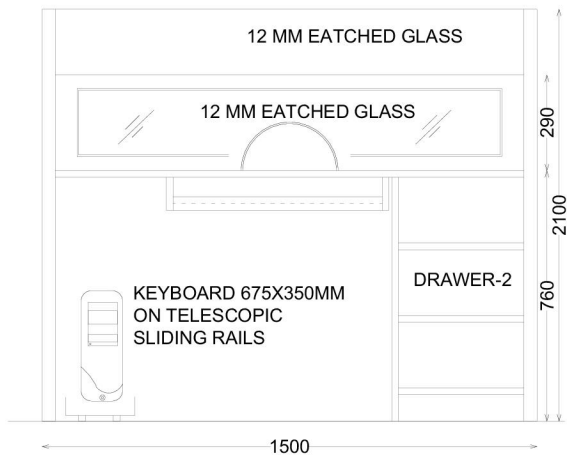
ELECTRICAL WORK					
S. No.	PARTICULARS	UNIT	QTY	RATE	AMOUNT
1	Providing and fixing, testing and commissioning for point wiring two nos. 1.55 sq. mm/2.5 sq.mm or 4.0 sq.mm PVC insulated single core stranded copper conductor wire 1100 volt grade (for Ph&N) and one nos. 1.0 sq. mm/ 1.5 sq. mm PVC insulated single core stranded copper conductor wire 440 volt grade, for earth wire 1.6 mm th. 25 mm dia BEC / NIC / AKG make PVC conduit pipes. All wires are to be ISI mark approved / specified make Anchor/ Finolex / Havells complete with all drops upto boards, staples, accessories and hardware etc. Installing the conduit in slabs, wall etc.The point shall include modular type switches of MK Anchor, Roma, Crab tree make as approved / specified in required combination including electronic regulator, 6 ASP control switch 3-plate ceiling rose, angle or straight holder adequate size to mount control switches for lights, fan sockets. Sockets for half points and ceiling fan regulator. rate must also include the cost of circuit wiring with 2x2.5 sqmm+1x1.5 sqmm				
a	Light points. & exhaust fan points	No.	45		
b	Fan with regulator (ceiling + bracket) (2x1.50 sq.mm + 1x1.5 sq.mm)	No.	11		
c	Call bell points inclusive of call bell.	No.	1		
e	16 Amp 3/5 pin point (2x2.5 sq.mm +1x1.5 sqmm)	No.	12		
f	Ac point -supply instalation of AC point with following item in surface / concealed manner 32 A D.P. 1 way switch with neon, plate & box 20 amp. 10 amp. Twinsocket with plate & box including 2x4.0 + 1x1.5 sqmm cu. Wire with pvc conduit etc complete.	No.	6		
2	Telephone Socket Point -Supplying, fixing and testing of telephone socket point wiring with two line telephone wire of approved Anchor Havells/Finolex make in 1.6 mm th 1" dia PVC conduit pipe including double line tel-Jack (modular type) on the switch board.	No.	10		
	10 pair tag block	No.	1		
3	UPS POINTS: Wiring for computer terminal points with 2x1.5Sqmm + 1x1.5 Sqmm PVC insulated copper conductor recessed in wall/under counter in PVC pipe/flexible pipe/casing capping as required. Rate inclusive of 3 nos. 6 amp switch & socket (5pin) (modular) with fuse & indicator i/c of box, base plate & cover plate, making all connections complete. (Average length 15M)	No	13.00		
4	Timer				
A	providing & installation of electronic digital no/off timer 2 stage for Ac beaing upto 3000 watt with , 40 AMP DPMCB in enclosure (ATM & Server room).	No	2.00		
B	Providing and installation of electronic digital no/off timer, load bearing up to 800 watt for glow sign board with 20Amp pp MCB in enclosure	No			
4	1.0,T. SPLIT AC				
	Supply & Installation 1.0 Split AC with one condensing and one cooling unit to be fixed at site including refrigerant piping, (approx length 5 m) micro processor based remote control unit all material, fixing of drain pipe labour etc complete. Five star rating	No.			
	1.5 T. SPLIT AC				
A	Supply & Installation 1.5 T Split AC with one condensing and one cooling unit to be fixed at site including refrigerant piping, (approx length 5 m) micro processor based remote control unit all material, fixing of drain pipe labour etc complete. Five star rating	No.			
B	M.S. BRACKETS				

	Fixing of MS Bracket and MS stand / grill for external condensing unit to be fixed outside the premises above shutter height including two coats of primer and paint all material, contingencies for AC's as above strictly as per the site condition etc complete.	No			
C	Supply & Installation AC fixing of at site including refrigerant piping, fixing of drain pipe labour etc complete.	Rm	15		
D	Voltage Stabilizer 5 KVA of standard ISI make	No			
E	Additional/Prop. copper piping for installation of split AC's at far end.	Rm			
5	Ceiling Fan -Supplying, erecting, and testing of approved/specified make Crompton, Havel, Orient electric ceiling fans complete with down rod, canopy, blades and speed regulator 230-250 volts including connection with all necessary materials as required.	No.	3		
6	Cabin Fan -Supplying, erecting and testing of approved / specified Almonard make oscillating cabin fan complete with base, blades, guards, speed regulators etc. 230-250 volts with connections, raw bolts/anchor	No.	8		
7	Exhaust Fan -Supplying, erecting and testing of approved / specified GEC, Crompton make (900 rpm, 380 mm sweep) exhaust fan complete with motor, mounting frame blades with connection, bolts, anchor fasteners etc complete as required.	No.	2		
8	Supply, installation, testing, & commissioning of lighting fixtures. All fixtures should be complete with all accessories such as lamps, starters, low loss copper chokes, PF improvement capacitors etc. The fixtures should be complete with ball & socket type vibration dampers & all accessories with necessary down rods. Above specification governs all work specified below:				
a	ELECTRICAL FIXTURES & FITTINGS Halonix Radiance- Ultraslim LED flat panel 36w hlfp22-02-36-cw/ww, size-600x600x10mm, recess/ pendant mounting ultraslim led flat panel 2'x2' with high efficient led & glare opal diffuser.	No.	19.00		
b	Down Light :- P&F recessed mounted down lighters (Wipro: WCP 32218 2 x 18W LED (TC-D)	No.	15.00		
c	Tube light -Supply and fixing of 18 W LED FTL (wipro wdf 8140) single tube fitting complete.	No.	5		
9	Supply and installation of circuit in app. make 1.6 mm thick, 25mm dia PVC pipes and at places where decorum is to be maintained in PVC casings with approved make PVC insulated wire as under. The rate shall be inclusive of all necessary fittings like junction boxes, tees, bends, saddles screws etc complete. PVC pipe to be of BEC/NIC/AKG make and wire of Havel, Anchor Finolex make.				
a	10x4 sq.mm + 1x1.5 sq. mm	Rm	40		
10	Supply and installation and connection of modular type app./ specified switch and socket complete with PVC box plate screws and all other accessories. Rate must also include the cost of circuit wiring with 2x2.5 sqmm + 1x1.5 sqmm				
	3 Nos. socket + 2 Nos. switches (6A)	No.	15		
11	Supply, installation, testing and commissioning of distribution board incoming 63 TPN MCB - 1 Nos. outgoing 6 Amp SPMCB - 8 Nos. and 2 Nos. 40 Amp DPMCB.	No.	1		
12	:LAN- (LOCAL AREA NETWORKING) FOR COMPUTERS :				
a	Supply and Installation of following factory fabricated patch cords (UTP-CAT 6) complete with connectors on both sides.				
	Two Meter length.	Nos.	12		

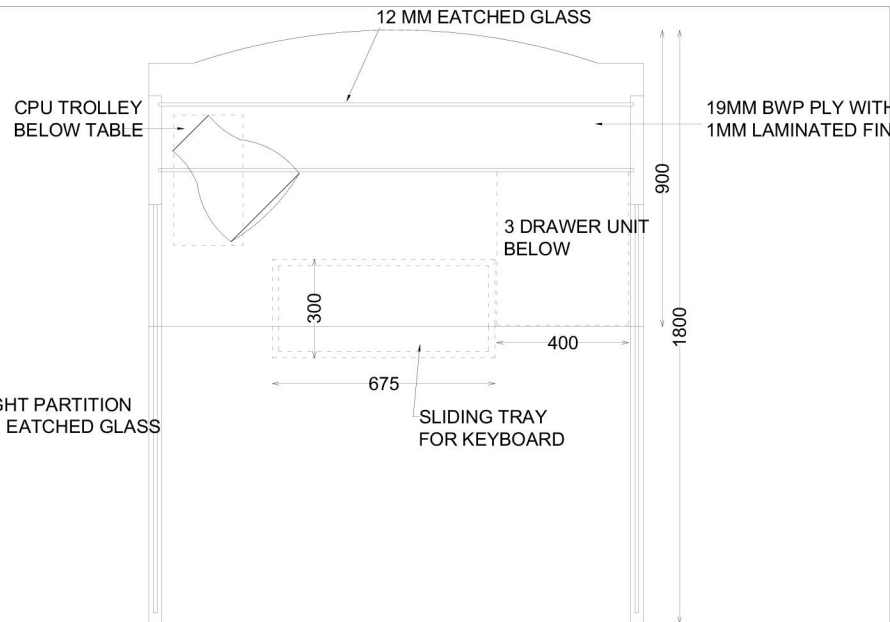
b	Supply and laying of Four Pair UTP CAT 6 LAN cables in 1 mm thick 20 or 25 mm dia pvc conduit t / Floor trunking with RJ-45 connector. including Supply and fixing of modular type Information Outlets with suitable size M.S./ PVC modular boxes complete with insulation displacement connectors etc suitable for CAT 6 UTP Cabling. One Port	Nos.	12		
c	Supply, Installation, Testing and Commissioning of the following 9-U-Rack on existing wall / table / plateform etc i/c fixing of equipment/ accessories etc as required.				
	9 U Rack.	Nos.	2		
13	D-Link Switch :- Providing and fixing at site 24/48 port D link make cat-6 data switch	job	12		
14	EARTHING: 600 x 600 x 3mm copper plate earthing i/c of watering, GI pipe with funnel, salt & coal filling, 10" x 10" masonry chamber with sand plaster, CI lid, 10SWG copper wire in PVC pipe from bottom of pit to existing ground level.	Nos.	2		
TOTAL					

3

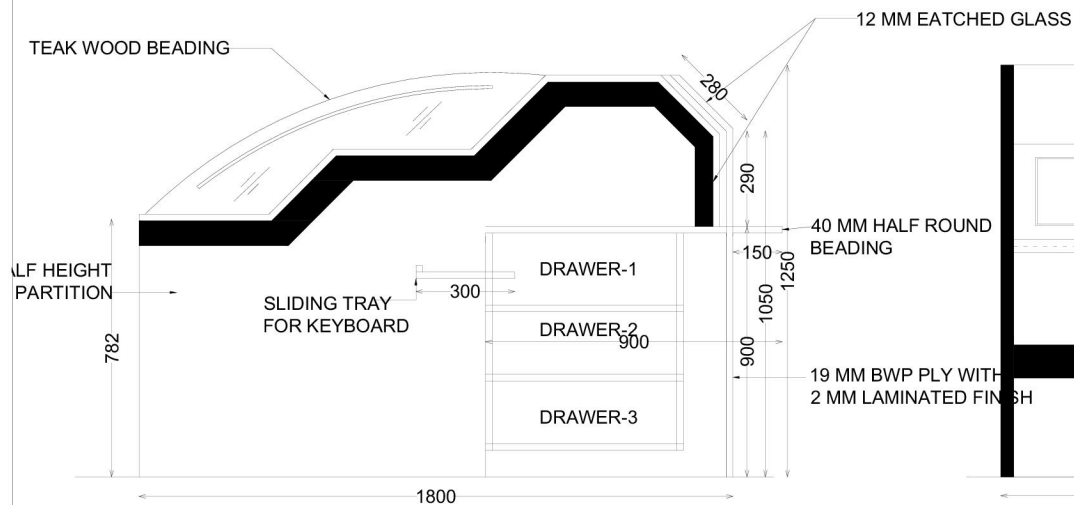
APPROVED LIST MATERIAL LIST		
S. No.	MATERIALS	BRAND / NAME
1	Glass Plain / Mirror	Modi Float / Saint Gobain / Aashi
2	Flush Door Shutter / Polywood / Laminate / Particle Board	Green/ Archit. (As per IS Code-710)
3	SS Hardware Fittings	Elbehari / Ebco/Hettich/Blum
4	Glue	Fevicol / Vemicol
5	Door Closer	Everite / Doorking / Garnish
6	Oil Bound Paint	Asian / Shalimar / ICI/ Neorlac / Berger
7	Locks	Godrej / Harrison / Plaza
8	Roller Blind	Mac / Vista / Aerolux
9	False Ceiling	Armstrong / Gypsum India / Daiken
10	C.P. Fitting	Jaquar / Parko / Gem / Kinstone
11	Foam	MM Foam, U Foam
12	Cushion	MM Foam, U Foam
13	Vitrified Tiles / Ceramic Tiles	HR Johnson/Naveen/EUROP/Somani/Orient
14	Drawer Unit	Godrej or approved equivalent desing wooden
15	Modular Furniture	Godren, Feather Lite, BP. Ergo, PSL
16	Aluminium Section	Mann, Jindel
17	Floor Spring	Godrej / Hyper



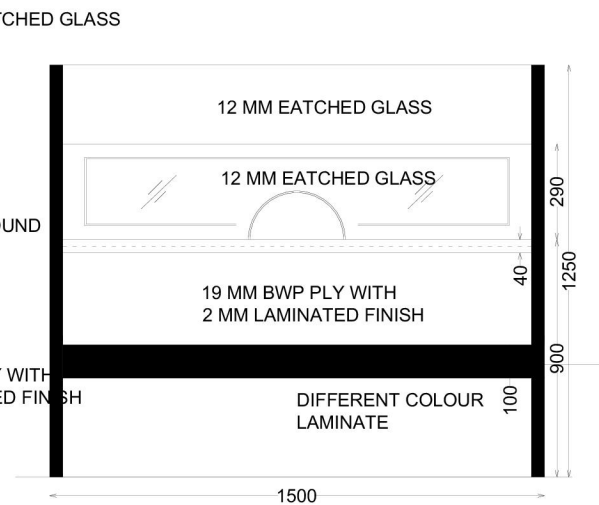
INSIDE
ELEVATION



PLAN

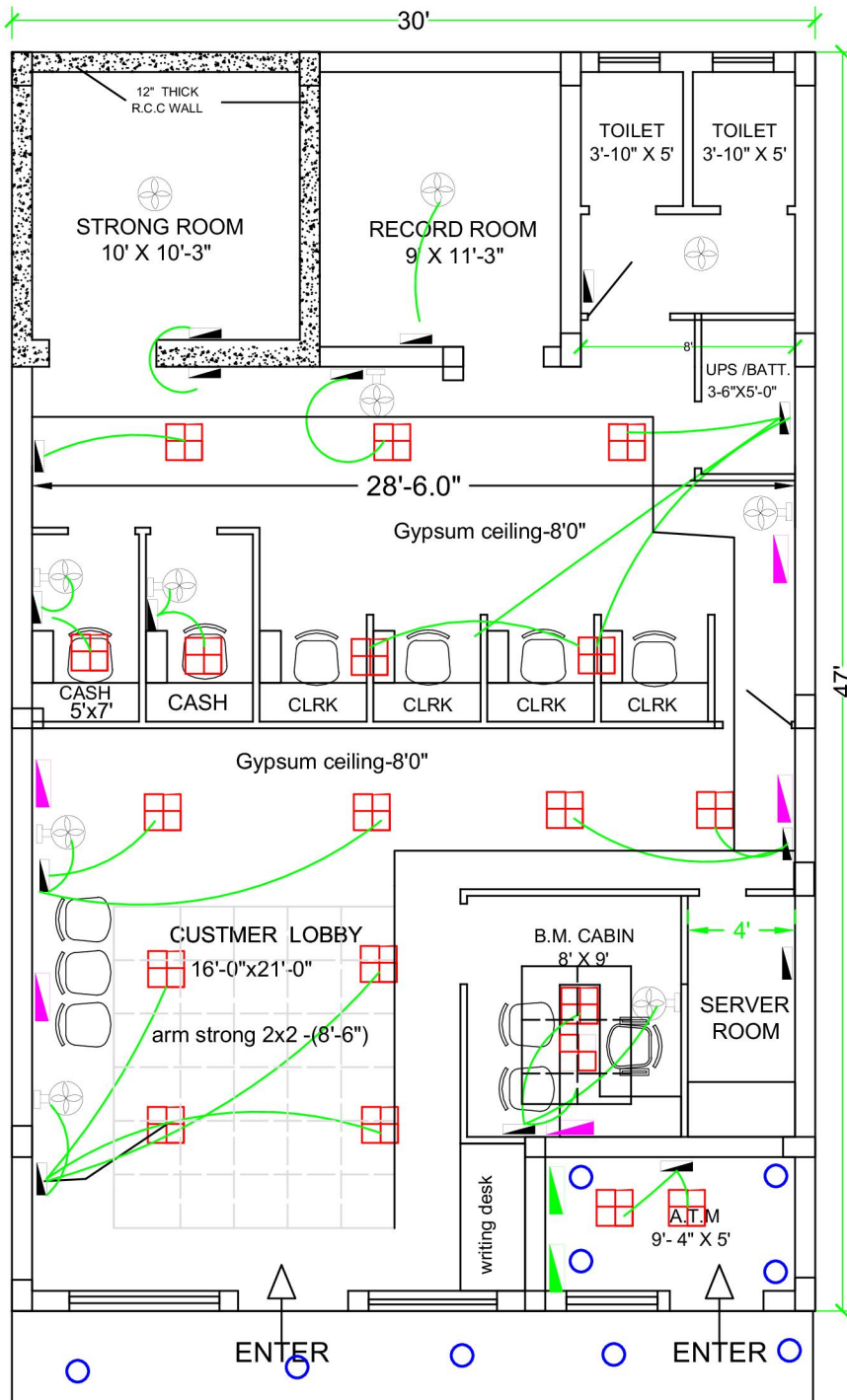


SECTION - AA



FRONT
ELEVATION

POLICE STATION BOUNDARY



LEGEND



2X40 LIGHT POINT



15 W LIGHT POINT



CEILING FAN



POWER MCB DB



WALL FAN



AC 1.0



AC 1.5



UPS LINE



FROM UPS ROOM



DATA CABLE LINE



FROM SYSTEM ROOM



ELECTRICAL LINE



FROM ELE. PANEL



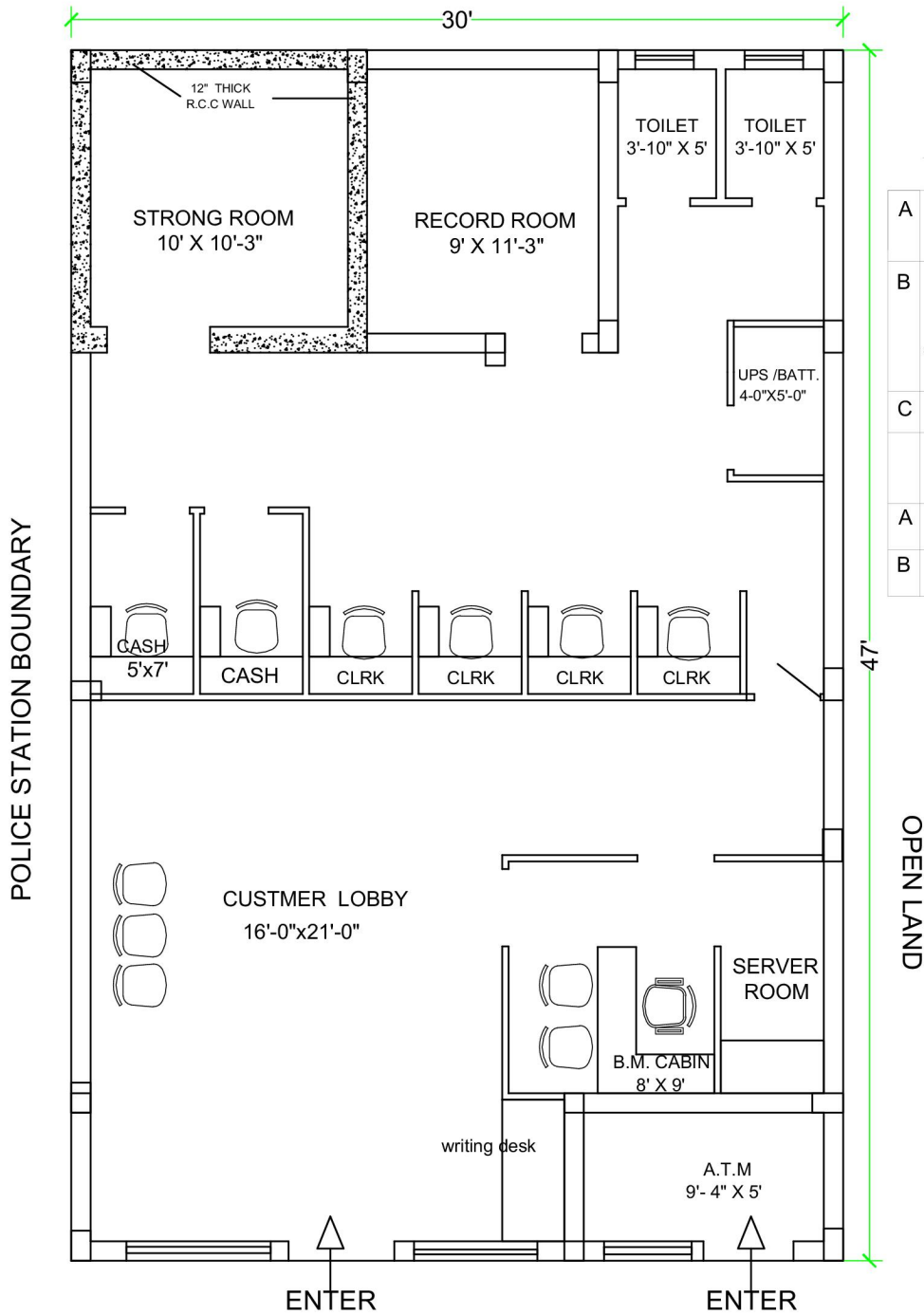
POWER MCB DB



SWITCH /HUB.

CARPET AREA -1200'-0" SFT

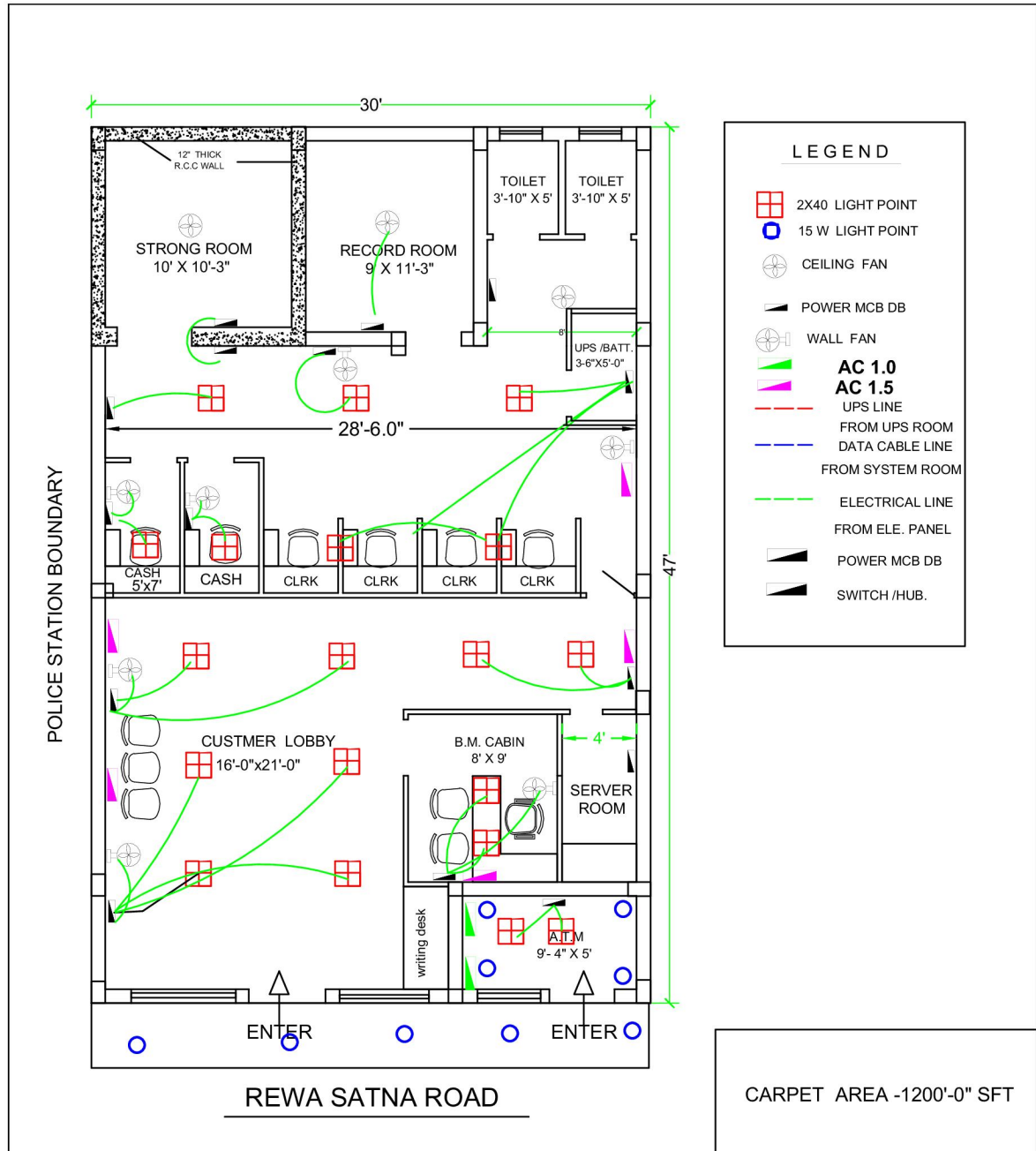
SHOPS CONSTRUCTED

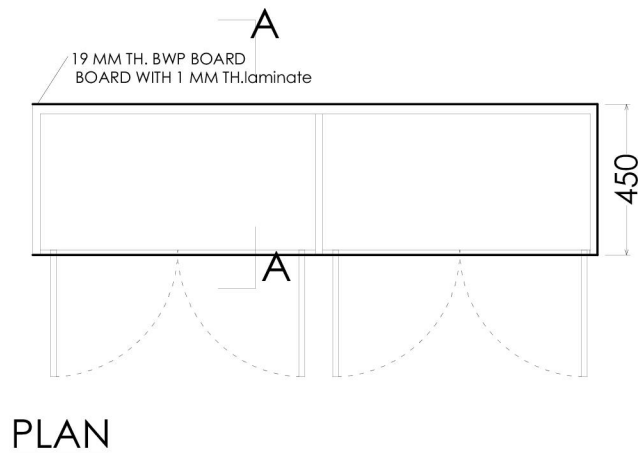
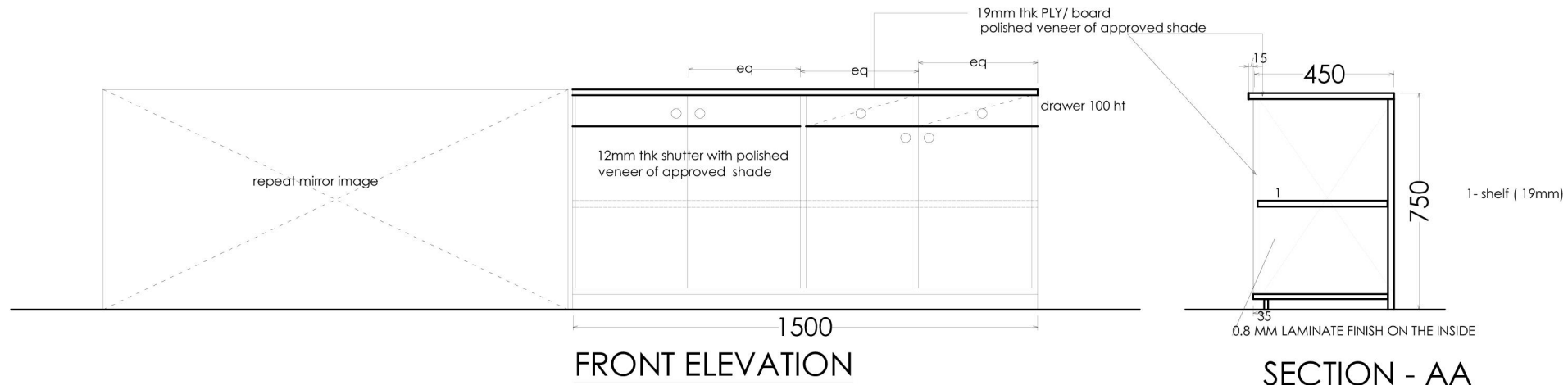


SPECIEICATION FOR STRONG ROOM

A	CONC. MIX :	M-20
	WALL ,FLOOR & ROOF:	300 mm thick. R.C.C.
B	STEEL REINFORCEMENT: 12 mm dia Tor Steel Two Way Double Reinforcement at 15 m.m.c/c Bothway Placed staggered so that both will be at every 7.5 cm in cross section .	
C	Clear Height :	Minium - 9'-9" rft
	Existing Clear Heights:-	
A	Floor to Slab Bottom	9'-9"
B	Floor to Beam Bottom	8'-9"& 7'-18"

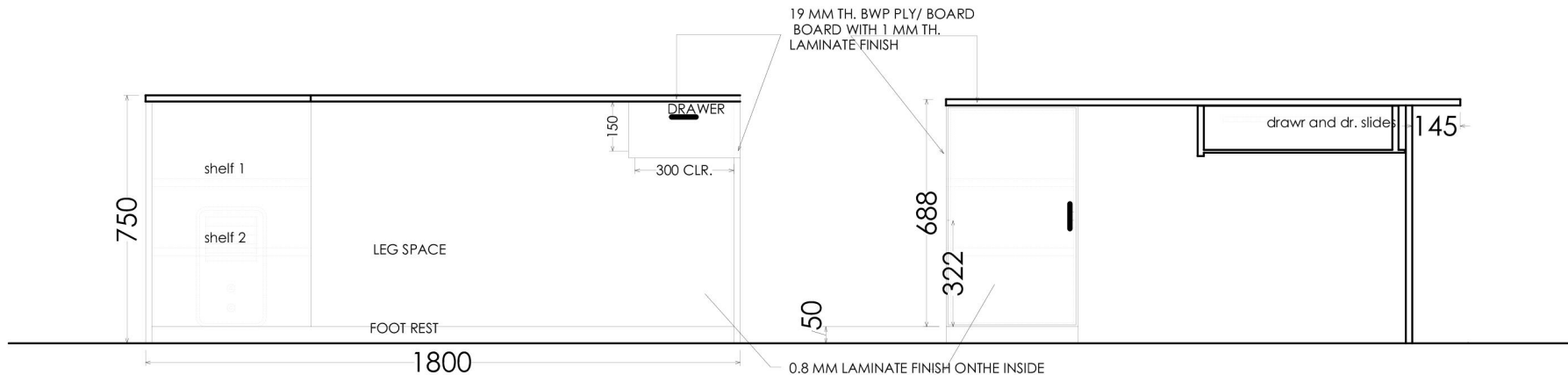
CARPET AREA -1200'-0" SFT





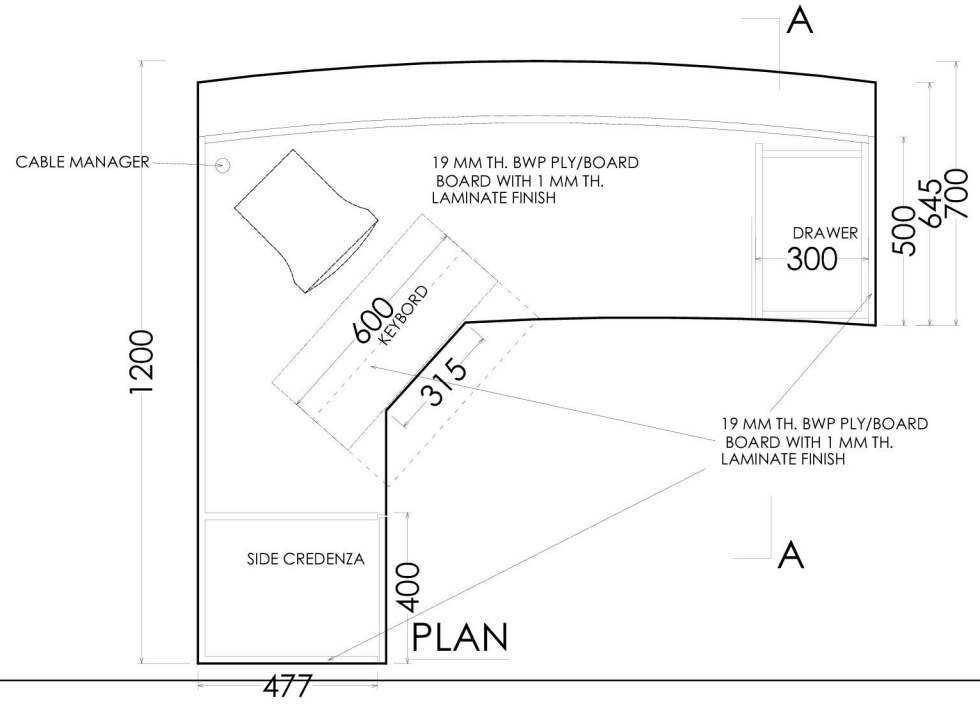
NOTE:

1. ALL SURFACES TO BE FINISHED WITH APPROVED SHADE OF VENEER
2. ALL DRAWERS SHALL HAVE DRAWER SLIDES (EBCO/ HAFELE/ HETTICH MAKE)



INSIDE ELEVATION

SECTION - AA



PLAN



FRONT ELEVATION