

Kalpangan Consultants Pvt. Ltd.

ARCHIECTURE ENGINEERING INTERIOR DESIGN
4, DR. SUNDARI MOHAN AVENUE, FLAT # 09 KOLKATA 700014
PH: 033-40035883 / 9830162952 email-kcpl.vaswati@gmail.com

PROPOSED INTERIOR WORK FOR SHIFTING OF RISHRA BRANCH & ATM TO NEW PREMISES, INDIAN BANK UNDER ZONAL OFFICE-CHINSURAH		
ABSTRACT OF ESTIMATED AMOUNT		
SL.	PARTICULARS	AMOUNT
I	SCHEDULE OF QUANTITES FOR FURNISHING AND ELECTRICAL WORKS	
II	SCHEDULE OF QUANTITES FOR LOOSE FURNITURES & LIGHT FAN FIXTURES	
NET TOTAL		
PLUS 18% GST AS APPLICABLE		

For Kalpangan Consultants Pvt.Ltd.

VASWATI PATTANAİK
DIRECT

**PROPOSED INTERIOR WORK FOR SHIFTING OF RISHRA BRANCH & ATM TO NEW PREMISES, INDIAN BANK
UNDER ZONAL OFFICE-CHINSURAH**

I. SCHEDULE OF QUANTITIES FOR FURNISHING AND ELECTRICAL WORKS

ITEM NO.	DESCRIPTION	QNTY.	UNIT	RATE RS. P.	AMOUNT RS. P.
1)	<p>GYPHUM BOARD PLAIN FALSE CEILING Providing and fixing in position dropped ceiling in two levels including vertical surfaces in between two level of ceiling surface with 12.5mm thick tapered edge gypsum board conforming to IS 2095 including providing and fixing of framework made of special sections power pressed from MS Sheet and galvanized in accordance with Zinc coating 600 as per IS 277 and costing of angle cleats of size 25mm wide x 16mm thick with flanges of 22mm and 37mm at 1200mm center to center one flange fixed to the ceiling with dash fastner 12.5mm dia with flanges of 22mm and 37mm at 1200mm center to center one flange fixed to the ceiling with dash fastner 12.5mm dia x 40mm long with 6mm dia bolts to the angle hangers of 25x25x5 mm of required length and other end of angle hanger being fixed with nut and bolts to G.I. Channels 45mm x 15mm x 0.9mm running at the rate of 12mm centre to centre to which the ceiling section o.5mm thick botton wedge of 08mm with tapered flanges of 26mm each having clips of 10.5mm at 450mm center to centre shall be fixed in a direction perpen - dicular to G.I. Channel with connecting clips made out of 2.64 mm dia x 230mm long G.I. Wire at every junction including fixing the gypsum board with ceiling section and perimeter channel.</p> <p>The perimeter of ceiling fixed to wall/partition with the help of rawl plugs at 450 mm center to center with 25mm long drive all screws @ 230mm interval including jointing and fixing to a flush finish of tapered and square edges of the gypsum board with recommended filter, paper tapes, finisher and two coats of primer suitable for gypsum board as per manufactures specification and also include the cost of making openings for light fittings grills, diffusers, cutouts made with frame of perimeter channels of the Engineer-in-Charge but including the cost of 2coats of Acrylic emulsion painting over primer. Rates to include cost of making openings for ceiling mounted electrical fittings/air-conditioning accessories and also making of openings of size 2'x2' with door for electrical servicing as per instructions.</p>	700	Sqft.		
2	<p>MODULAR CEILING Mineral Fiber Acoustical suspended ceiling system/(Dune Micro look Tile): P & fixing false ceiling with 600x 600 mm dune micro look ceiling tile of "Armstrong" with 15mm flange stitched suspension black reveal silhouette grid system framework with Aluminum channels etc. complete in all respect & finish with proper line & level as per manufacturer specification. The level of ceiling shall be decided considering light fixtures, ceiling fans and after discussion with engineer in charge. Contractor Must Comply with the Technical Specification as in Tender while executing the item.</p>	360	Sqft.		
3	<p>FULL HEIGHT PARTLY GLAZED WOODEN PARTITIONS Supplying and erecting full height partlyglazed partition (varying from 8'6" to 10ft high) as per drawing and conforming to the following specifications :</p> <p><u>Basic Framework</u> : Well seasoned Malaysian sal wood sections, treated with two coats of wood preservatives, 50mm x 50mm (minimum) at maximum 600 mm horizontal or vertical spacing as per site conditions.</p> <p><u>Skin Membrane</u> : (Opaque portion upto 900mm from floor level with 1x6 mm thick BWR grade plywood on each face with 4x4mm grooves formed at the top layer as per drawings/instructions.</p> <p><u>Glazing</u> : 12 mm thick clear float glass fixed with continious White or Steam Beech wood glazing beads of approved shape (finished 35x25 mm) all around, polished & coated with NC lacquer finish. The rate should also include cost of decorative etching on one side of the glass.</p> <p><u>Finishing</u> : 1.0mm thick laminate sheet of same or conivation shades as per instructions.</p> <p><u>Edge Moulds</u> : All free top/end surfaces shall have polished white or steam beech wood moulds of apprived shape (from 80x 25mm sections) with LC lacquer in mat finish.</p> <p><u>Skirting</u>: 100mm high x 12 mm thick polished white or steam beech wood skirting on both faces with NC lacquer in Matt finish.</p> <p>Quoted rates shall include all necessary materials, accessories and also allow provisions for electrical/telephone/computer wiring conduits and switch boxes, etc (Materials of wiring conduits and switch boxes shall be separately paid for.)</p>	150	Sq.Ft.		

4	<p>LOW HEIGHT SOLID WOODEN PARTITIONS Supplying and erecting low height opaque partitions (from 3'-00" 4'. high) as per drawing and conforming to the following specifications : <u>Basic Framework</u> : Well seasoned Malaysian sal wood sections, treated with two coats of wood preservatives, 50mm x 50mm (minimum) at maximum 600 mm horizontal or vertical spacing as per site conditions. Vertical Members shall be suitably anchored and at ceiling level to ensure rigidity. <u>Skin Membrane</u> : 6 mm thick BWR grade plywood on each face with 4 mm grooves formed as per drawings/instructions. <u>Finishing</u> : 1.0mm thick laminate sheet of combination shades as per instructions on one side and otherside finished with Synthetic enamel paint <u>Skirting</u>: 100mm high plywood skirting finished in 1mm thk. Laminate of combination shades as per instruction and drawing. Quoted rates shall include all necessary materials, accessories and also allow provisions for electrical/telephone/computer wiring conduits and switch boxes, etc (Materials of wiring conduits and switch boxes shall be separately paid for.)</p>	30	sqft.	
5	<p>FULL HEIGHT SOLID PARTITION ON BOTH SIDE LAMINATE Supplying and erecting full height opaque partitions (from 8'-6" 10ft. high) as per drawing and conforming to the following specifications : <u>Basic Framework</u> : Well seasoned Malaysian sal wood sections, treated with two coats of wood preservatives, 50mm x 50mm (minimum) at maximum 600 mm horizontal or vertical spacing as per site conditions. Vertical Members shall be suitably anchored and at ceiling level to ensure rigidity. <u>Skin Membrane</u> : 6 mm thick BWR grade plywood on each face with 4 mm grooves formed as per drawings/instructions. <u>Finishing</u> : 1.0mm thick laminate sheet of combination shades as per instructions on one side and otherside finished with Synthetic enamel paint <u>Skirting</u>: 100mm high plywood skirting finished in 1mm thk. Laminate of combination shades as per instruction and drawing. Quoted rates shall include all necessary materials, accessories and also allow provisions for electrical/telephone/computer wiring conduits and switch boxes, etc (Materials of wiring conduits and switch boxes shall be separately paid for.)</p>	350	sqft.	
6 6A	<p>Providing, fitting & fixing the cash counters & cabin along with partitions all complete: Internal Size of the cash cabin :4'-6" (w) x 7'-0"(l) x 7'-0"(h) Providing fixing & fixing 2'-6" wide & 2'-6" high staff working top made of 18mm thick BWP block board of approved make finished with 1.0 mm laminate of approved make & shade. The customer transaction top shall be 1'-6" wide projecting 6" on the customer side at a height of 1' above the staff working counter thus making a total height of 3'-6". The customer top is made of 3/4" thk. Granite top (Black galaxy) placed on 18mm thick BWP blockboard which is cut & shaped with edges round polished. Below the working top/counter will be 1'-4" wide drawer cum shuttered cabinet unit on one side & metallic CPU trolley on the other side with key board tray with slide channels & foot rest in between for each of the cash counters specs same as Banking Counters. All the specification of the drawer unit/CPU trolley is same as that of Work station in item no 6. Below the Transaction top the portion which is overlapping with the working counter of 10" deep will be covered by 2 sets of sliding shutters with an intermediate shelf with all locking arrangement for keeping currency notes. Both the staff working top & the transaction top is rested & supported together by a front Apron or Double skin partition which is similar in design and specification as that of Banking counters. There will be necessary grooves between the two different decorative laminates as shown in the detail drawing & as directed. The counter will be provided with wire manager. The front portion of cash cage above the transaction top (from 3'-6" to 7'-0" height) will be provided with 2 nos. of 12 mm thick float glass leaving a gap of 2" between the two glass panes so as to allow conversation between the customer & the cashier & a cut out of 8" x 4" at the central bottom part of each of the transaction top.</p>	10	Rft.	

6B	<p>Cash Cage Side, Intermediate & rear Partitions with Partly glazed door The intermediate/side/rear partition with doors between Cash Cabins as Partly glazed Wooden Partition upto 7'-0" height with the following specification: <u>Basic Framework</u> : Well seasoned Malaysian sal wood sections, treated with two coats of wood preservatives, 50 mm x 50mm (minimum) at maximum 600 mm horizontal or vertical spacing as per site conditions. Vertical Members shall be suitably anchored at floor level to ensure rigidity. Exposed frame members in the glazed portions shall have wider spacing (approx. 1800 mm clear) as per instructions. Exposed members shall be finished with 1.0mm thick laminate sheet of same or combination shades, over 6 mm BWR grade plywood including 4 mm grooves at locations as per instruction. <u>Skin Membrane</u> : (Opaque portion upto 1050 mm(3'-6") from floor level with 6 mm thick BWR grade plywood on each face with 4x4mm grooves formed as per drawings/ instructions. <u>Finishing</u> : 1.0mm thick laminate sheet of combination shades as per instruction and drawing. <u>Skirting</u>: 100mm high plywood skirting finished in 1mm thk. Laminate of combination shades as per instruction and drawing. <u>Glazing</u> : Strips of 12 mm thick clear float glass fixed with continious White or Steam Beech wood glazing beads of approved shape (finished 35x25 mm) all around, polished & coated with NC lacquer finish. The rate should also include cost of decorative etching on one side of the glass. Quoted rates shall include all necessary materials,accessories and also allow provisions for electrical/telephone/computer wiring conduits and switch boxes, etc (Materials of wiring conduits and switch boxes shall be separately paid for.) All exposed edges of the BWP ply & blockboard are to be finished with 12 mm thk. Rubber wood lipping which are to be polished as directed. Provision for extra wooden frame work of same section for intermediate glazing to be included in the rate. There will be provision for small trays/windows for transferring of small copy either from the banking area to the cash cabins or between the cash cabins as directed by the architect. The cost of all fittings of the door :handle locks, aldrop handles, hydraulic door closer, night latch all of appoved make of the doors wherever required in the cash section to be included.</p>	160	SQFT.		
7	<p>WALL & PILLAR PANELLING OF ATM & 3NOS. COLUMNS IN THE BANKING LOBBY Wall Panelling / column encasing (upto False ceiling height) works as per Branch Ambience Standardised manual of the Bank conforming to the following specifications : Shall be made up of 2"x1" salwood framework with 12mm thk ply back up. The framing shall be fixed at intervals of 2'0" c/c horizontally and vertically. Shall be made up of 19mm thk plywood as per site conditions. The framing shall be fixed with 6mm thick ply to form 4mm grooves finished with 1mm thick approved color laminate of approved make at every 1ft interval.The skirting shall be finished with 3" wide 1.00mm approved bi color laminate of approved make. Quoted rates shall include all necessary materials, accessories and labour and also allow provisions for electrical/telephone/computer wiring conduits & switch boxes etc. complete with necessary jacking /thickening of panels to accommodate conduits/ switch boxes.(Materials for wiring conduits and switch boxes shall be separately paid for).</p>	325	Sqft.		
8	<p><u>DISTRIBUTION CABLE / WIRE</u> Supply & lay 1.1 KV grade PVCA CU cable on wall having MS /HDP pipe protection near floor level and clamping as required for the following:-</p> <p>A) 25 Sq mm 4 core CU with 2 nos 10 SWG GI wire</p> <p>B) 16 Sq mm 4 core CU with 2 nos 10 SWG GI wire</p> <p>C) 10 sq mm 4 core CU with 2 nos 12 SWG GI wire</p> <p>D) 6 sq mm 4 core CU with 2 nos 12 SWG GI wire</p> <p>E) 2.5 sq mm 2 core CU for UPS Plate Earthing</p> <p>F) 4 nos. 16 sq. mm. CU flexible wire through GI flexible pipe complete with end termination with CU sockets. (Meter loop connection with Main SFU & Busbar)</p>	30	Mtr		
		25	Mtr		
		25	Mtr		
		25	Mtr		
		25	Mtr		
		10	Mtr		

9	Making end termination of 1.1 KV grade PVCA CU cable with supply of cable end box , brass Gland, CU crimping socket & jointing materials as required for the following:-			
A)	25 Sq mm 4 core CU	2	Each	
B)	16 Sq mm 4 core CU	2	Each	
C)	10 sq mm 4 core CU	8	Each	
D)	6 sq mm 4 core CU	5	Each	
E)	4 sq mm 2 core CU	8	Each	
10	Supply draw and connect 1.1 KV grade PVC S/C multistrand CU wire FR grade in suitable PVC conduit & accessories including wall cutting & repairing as required for the following:-			
A)	2X4 + 1X 2.5 sq mm. (Glow sign supply, UPS & LDB DB supply, UPS incoming / outgoing supply).	250	Mtr	
B)	1X6 SQMM CU wire for earthing	200	Mtr	
C)	2X2.5 + 1x1.5 sq mm. (for UPS & Raw power Circuit)	200	Mtr	
11	<u>TELEPHONE CABLE</u> Supply, lay and connect PVC insulated CU conductor and armoured 10 pair Telephone cable	50	Mtr	
12.0	<u>EARTHING</u>			
12.1.1	Supply and election Earth station with 600 x600x3mm GI Plate with earth strip / wire connecting arrangement including excavation and back filling with 25 mm dia GI pipe for watering.(for UPS Earthing & Light fan Fixtures)	2	Each	
12.1.2	Supply and erection of masonry pit for each Earth station having CI/RCC inspection cover.	2	Each	
13.0	Supply and erection of earth bus on wall (min. length 0.3 mtr.) on insulator with drilled holes on the bus with GI bolt , nut , washer etc for the following:-			
13.1.1	With (25x6) mm GI flat	1	Each	
13.1.2	With (25x3) mm CU flat	2	Each	
14.0	Supply and lay GI flat for earthing underground /on wall including connection for the following:- (25x3)mm GI flat	80	Mtr	
15	TRAP DOOR & BOXING FOR ROLLING SHUTTERS & COLLAPSIBLE GATE WITH ACP FINISH Providing and fixing trap doors consisting of 1/4" thk. Marine ply shutters with a clear opening of 4.5" opening for smooth operation of shutters and rest is closed with mirror screws (for opening & for servicing). The shutters shall be finished with approved ACP finish with all materials and frame of 2"x1 1/2" teak wood sections shall be provided for proper support and strength. Rate shall be inclusive of necessary fittings like hinges(hafele/ebco make), ball catches, tower bolts, etc.	60.0	SQFT	
16	PLASTIC EMULSION PAINT WORK OF Air Conditioned Area Providing and applying two coats of Plastic Emulsion paint of approved make & colour over a coat of primer of approved color & brand in the A C area over 2 coats of putty in the Wall areas which shall be damaged during refurbishing work.	2500	Sqft.	
GROSS TOTAL OF FURNISHING & ELECTRICAL WORKS FOR RISHRA BRANCH				

**PROPOSED INTERIOR WORK FOR SHIFTING OF RISHRA BRANCH & ATM TO NEW PREMISES, INDIAN BANK
UNDER ZONAL OFFICE-CHINSURAH**

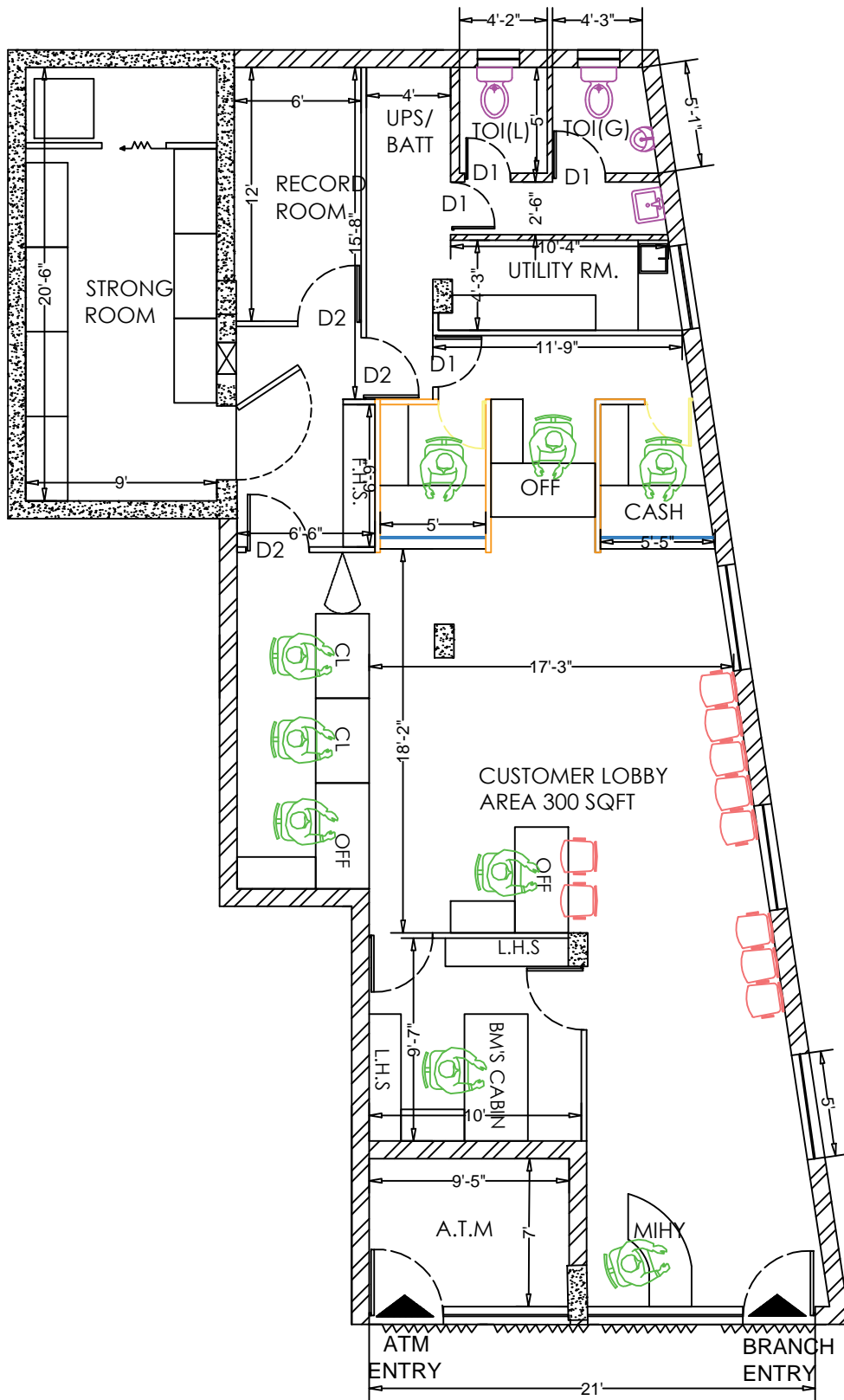
II. SCHEDULE OF QUANTITIES FOR LOOSE FURNITURES & LIGHT FAN FIXTURES

ITEM NO.	DESCRIPTION	QNTY.	UNIT	RATE RS. P.	AMOUNT RS. P.
1	<p>TABLES Providing, fixing and fitting in position free standing work station made of 19 mm thk. BWP Ply + 1.0 mm. Laminate of approved make and colour for the table top, sides & front apron The table is supported on the left side by a 1'-6" wide & 2'-0" deep drawer unit consisting of a tea tray, one drawer & a shuttered cabinet all in 1.0 mm thk. laminate finish and Ply partition on the right side . The table is provided with a readymade metallic CPU Holder with swivel facility, (CPU HL SW / INNOFIT systems or similar) & readymade key board drawer of engineering Plastics (KD 575 P MT/ INNOFIT System or similar) shall be suspended below the table top. Quoted rates shall also include cost of polished white or steam beech wood moulding (finished 40x20 mm section) to edges of table top; polished white or steam beech wood lipping (6mm thick) to free edges of block board/ plywood surfaces; approved drawer - slides, concealed type auto-closing shutter hinges and locks with keys in duplicate; other necessary hardware and accessories including satin finish S.S. handles, knobs and wire - managers etc. of approved quality & the table top is finished with 5mm thick glass.</p> <p>A) Approx. size of 1800 x900 x 750 mm B) Approx. size of 1500 x 750 x 750 mm C) Approx. size of 1200 x 750 x 750 mm D) May I Help you Desk: Curved table 1500 x 600 x 750 mm</p>	1 3 2 1	No. No. No. No.		
2	<p>SIDE CREDENZO The side unit is of size 3' (L) X 1'-6" (W) X 2'-6" (H) consisting of a top row of two sets of 4" high drawers with cabinets below with sliding shutters, made of 19mm thick BWR grade block boards all finished in 1.0mm thk. laminate. Exposed block board surfaces shall be finished with 1.00mm laminate sheet of approved shade and make. Inner faces of sliding shutters shall be polished in approved color. Free edges of block board shall have polished white or steam beech wood half round moulds (out of 20 x 20 mm sections). Inner faces of cabinet units shall be polished in approved shade quoted rates shall include cost of necessary hardware , Viz handles, locks with keys in duplicate, etc.</p>	4	Nos.		
3	<p>STORAGE UNITS P/F/F Low /Full height filing cabinet 1'-4" deep/ upto 3'-0" ht for LHS & 7' Ht. for FHS, made of 18mm BWP blockboard with intermediate shelves. The back of the cabinet to be made of 6mm thk.BWP ply fixed on the wall. There will be one horizontal division and vertical dividers of same block board at approx. 3ft.apart with sliding shutters. All exposed surfaces & the shutters are finished with1.0 mm thk. decorative laminate of approved make & shade. Cost of all fittings like brass hinges, godrej locks,magnetic hinges, godrej locks, magnetic catches, steel matt finish "D" type handles shall be inclusive.</p>	100	Sqft		
4	<p>FLUSH DOOR Supplying and fixing in position overall 37mm thick solid core hot pressed phenol formaldehyde bonded approved flush door shutter finished door shutter finished with 1.0mm thick laminate sheet of approved shade and quality on both sides of the door shutter including cost of hardware fittings e.g. mortice locks, brass hinges, hydraulic door closer, door handles etc. of approved make and quality. Average size of shutter (D1) : 2' 6"x 7'-0" Average size of shutter (D2) : 3' 0"x 7'-0" Average size of shutter (D3) : 2' 6"x 4'-0"(swing door)</p>	4 3 1	No. No. No.		
5	<p>PARTLY GLAZED DOOR SHUTTER Providing, fixing & fitting in position Door shutters made of specification similar to that of item (2) hinged on 3 nos. brass hinges as required with the exception that the wooden frame is of section 2" x 1.5". The cost of all fittings:handle locks, aldrop handles door closer, night latch all of approved make to be included.The glazed portion will be between 3'-0" to 6'-8" of 6 mm thk. glasspanes of approved quality. Average size of shutter (D2) : 2'-6"x 7'-0"</p>	2	Nos.		

6	<p>TWIN STILE FULLY GLAZED PARTITION & DOOR FOR MAIN ENTRANCE OF BRANCH & ATM</p> <p>Providing & fixing in position Twin stile door made of 40 mm thk well seasoned teak wood of top & bottom stiles, fixed portion with 12mm thk. Toughened float glass & openable portion with Single glazed shutter made of 12 mm thk Toughened Float glass with necessary hardware fixtures of approved make & design,</p> <p>viz. double action ISI marked floor springs, on which the shutters are pivoted at the top & bottom, brass flushbolt, satin finish stainless steel decorative tubular handles on both the faces,(Dorset /Dunex or equivalent approx. 300mm long) complete as per direction. Rate should include etching of the Bank's logo & emblem on the Glass in the size & design as approved by the architect. Wooden surface should be polished in approved shade N.C. Lacquer in matt satin finish.</p>				
A	FIXED GLAZING	100	SQFT.		
B	OPENABLE GLAZING	50	SQFT.		
7	<p>PIN-UP NOTICE BOARD IN BRANCH & ATM</p> <p>Providing, fitting in position pin-up board made of soft cork board finished with the fabric as approved,matching with the colour scheme of the banking hall with a R.W. moulding all around the edges.</p>	24	Sqft.		
8	<p>WRITING LEDGE CUM CHEQUE DROP BOX</p> <p>Providing & fixing in position writing ledge of size: 3'(l) x 1'(w) fabricated out of 19mm thk BWP blockboard,1mm laminate finished and 12mm & 10mm bevelled, machine polished glass as indicated fixed to the pillar. Writing ledge will be having glass divider made out of 10mm thk glass for keeping deposit slips.White beach / white cedar lipping with natural polish is to be provided as directed. Below the shelf after a 6" gap is place a cheque drop box of size :2'x 2'x 6" with 1" wide slit for inserting cheques made of 19mm thk BWP blockboard, 1mm laminate finished. (At the branch and ATM 1no. each) Item is to be completed in all respects as per design, direction / approval of the Architect.</p>	1	NO.		
9	<p>UTILITY COUNTER</p> <p>Providing & fixing in position 19mm thk Plywood counter fixed to the Partition with vertical support made of 19mm Plywood all finished with 1mm thk. Laminate finish.</p>	10	RFT		
10	<p>WINDOW SCREEN</p> <p>Providing, fitting in position 100mm Vertical blinds made of best quality PVC coated polyester fabric of approved make & shade & to be tailored to the size of the window.</p>	100	SQft		
11	<p>FAN</p> <p>Supply, erection and connection of 400 mm 230V oscillating type wall mounted bracket Fan.</p>	15	Each		
12	<p>Call Bell</p> <p>Supply and fixing of call bell with modular type push complete with plate & box to be fixed at the entrance gate.</p>	1	Each		
13.0	<p>LIGHT FITTINGS</p> <p>Supply, erection and connection of fluorescent / compact fluorescent / mini halogen fitting with lamp , ballast / Transformer and other accessories for the following:-</p>				
A	PLUTO LHEWEIP6PW1W036 36W 840 2'X2' HAVELLS	18	Each		
B	INTEGRA LHEBGTP5PZ1W015 15W 830 HAVELLS	13	Each		
C	ENDURA LINEAR NEO LHEWEBP5IN1W020 20W 830	12	Each		
14.0	<p>TELEPHONE POINT</p>				
A	Telephone point wiring with 2 pair PVC insulated CU conductor (0.5mm) telephone wire drawn through PVC conduit.	5	Each		
B	Supply and erection of modular type telephone outlet RJ11 mounted on suitable front plate housed in recessed MS box.	5	Each		
C	Supply and erection of 10 pair telephone terminal box (Krone type housed in MS box).	1	Each		

15.0	<u>SWITCH/ MCB</u> Supply & erection of 415V/230V equipment individually on wall housed in MS enclosure with metal front cover for the following:				
A	100A FP SFU with HRC fuse links as main incomer with cable entry box.	2	Each		
B	40A rated 4P On-Load CO Switch to be connected after the TPN Busbar with cable entry box at both ends.	1	Each		
C	32A TPN SFU with rewirable fuse links for Generator supply.	1	Each		
D	40A DP MCB Isolator for controlling LDB at exit gate.	1	Each		
E	25A DP MCB for UPS incomer & outgoing.	4	Each		
F	TPN Busbar chamber having 4 nos. 25x6mm CU Bars fixed on insulators.	1	Each		
16.0	<u>DISTRIBUTION BOARD</u> Supply & erection of 415V, TPN wall mounting DB housed in Horizontal Double door DB box consisting of the following:-				
A	<u>MDB:</u> i) Incomer- 1 No - 63A 4P MCB (10KA). ii) Outgoing- 7 Nos. - 32 SP MCB (10KA). (UPS supply for Bank, and LDB supply)	1	Set		
B	<u>PDB / AC DB:</u> i) Incomer -1 No- 100A 4P MCB Isolator. ii) Outgoings- 10 nos. -16/20 SP MCB (10KA).	1	Set		
17.0	Supply & erection of 230V SPN Wall mounting DB housed in SPN double door DB box consisting of the following:-				
A	<u>LDB:</u> i) Incomer- 1 No- 32A 2P MCB(10KA) ii) Outgoing-10 nos. -6A/10A SP MCB(10KA)	1	Set		
B	<u>CDB:</u> i) 1 no - 25A DP MCB(10KA) ii) 2 nos. - 10A SP MCB(10KA) iii) 6 nos. - 6A SP MCB(10KA)	1	Set		
18.0	<u>LIGHT , FAN & RAW POINT :</u> Supply & wiring with 3x1.5 sq. mm 1.1 KV grade PVC S/C multistrand CU wire (FR) in suitable size PVC conduit & accessories having control board with modular switch mounted on suitable front plate and housed in recessed MS box. The point wiring also include circuitwiring with 1.1 KV grade 2 nos. single core 2.5 sq. mm +1 no. single core (green colour for Earth) PVC insulated flexible copper conductor wire through suitable size PVC conduit from DB to Switch board, interconnection and mending good all damages to original finish.				
A	One Light controlled by 6A switch	31	Each		
B	Two Light controlled by 6A switch	6	Each		
C	Bracket fan point with 6A switch	15	Each		
D	Modular type 6A switch, 1 no. 6A 5 pin socket point mounted on suitable front plate on separate switch board other than light / fan switch board. (Power to be tapped from nearest S.B/ LDB).	12	Each		
G	Call bell point with bell push and bell (for manager's Chamber).	1	Each		
19	<u>UPS POWER OUTLET CLUSTER POINT</u> Computer socket outlet cluster point wiring with 1.1KV grade 2x 2.5 + 1x1.5 sq. mm. PVC insulated flexible copper conductor wire(FR) through suitable size PVC conduit with all accessories up to connection of 2/3 nos. sockets cluster in one circuit connecting by looping method. The work includes supply and fixing of sockets outlet cluster components as detailed below:- 1 nos.- 16A modular type switch. 3 nos. - 6/16A 5 pin modular type socket 1 each no. - Front plate & MS box. (for Each Table & counters)	13	Each		

20	<p><u>16A RAW POWER OUTLET POINT</u></p> <p>Wiring for Power outlets from DB with 1.1 KV grade 2x 2.5+1x1.5 PVC insulated copper conductor wire (FR) through suitable size PVC conduit complete with 1 no 6/16A socket with 16A control switch in suitable size modular box with front plates (Cabtree Legrand), junction box, circular box elbows etc and all other accessories surfaced on wall above false ceiling and concealed by chase cutting on wall & making connection complete. (Maximum 2 nos. sockets cluster in one circuit connecting by looping method).</p>	3	Each		
21	<p><u>A.C. POWER POINT</u></p> <p>A.C. power point wiring from PDB with 1.1KV grade 2 nos. single core 4.0 sq. mm + 1 no. 2.5 sq mm (Green colour for Earthing) PVC insulated copper conductor wire (FR)through suitable size PVC pipe on wall / ceiling surface with all wiring accessories. The work includes supply & fixing by chase cutting on wall, North West /Cabtree make Starter 18-25A (MS housed) unit with 16A socket & matching 16A Plug top complete with all interconnections for 2T, 1.5 and 1Ton AC.</p>	6	Each		
22	<p><u>TIMER D.B. FOR AC IN ATM ROOM & GLOW SIGN BOARD</u></p> <p>i) 1 no - 24 Hours Time switch(Leg rand / Siemens/L&T) ii) 2 nos. DP contactor, 20A rated(2 NO) iii) 2 nos. 16A rated SP MCB (10KA). (For alternative running of 2 nos. 1 Ton AC at 4 Hours interval). 2 nos. - Indicating Lamp(Orange & Red/ Blue)</p>	2	Set		
GROSS TOTAL OF LOOSE FURNITURES & LIGHT FAN FIXTURES FOR RISHRA BRANCH					



OPTION - I

PROPOSED CIVIL LAYOUT PLAN OF
SHIFTING OF RISHRA BRANCH
 INDIAN BANK , UNDER ZONAL
 CHINSURAH

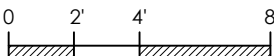


KALPANGAN CONSULTANTS PVT. LTD.
 FLAT NO.9, 4, DR. SUNDARI MOHAN AVENUE
 KOLKATA-14, PH. NO. -9830162952

PROPOSED FURNITURE LAYOUT
 OF **RISHRA BRANCH**



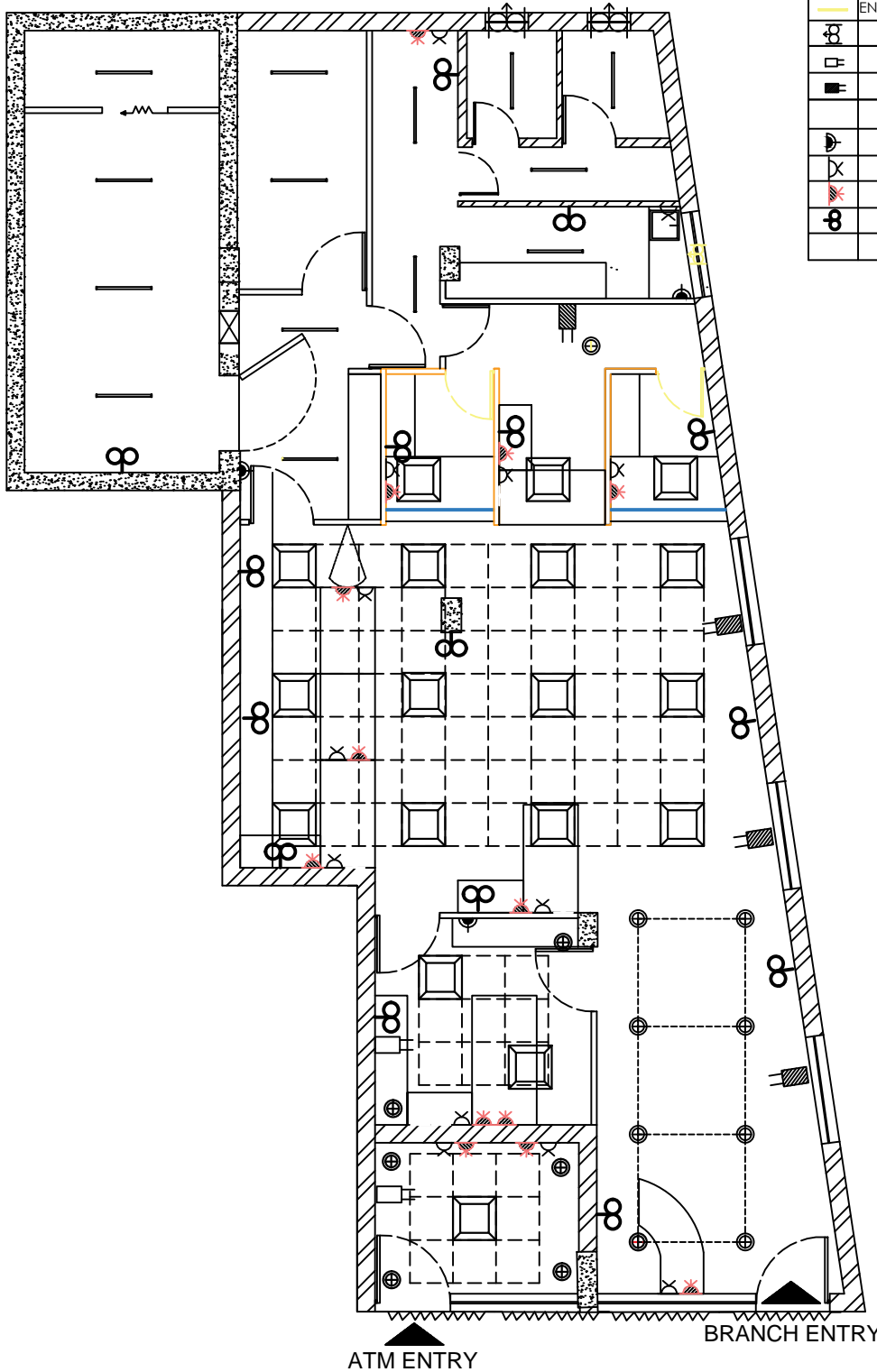
SCALE -



DATE -16/07/2022

LEGEND

	PLUTO LHEWEIP6PW1W042 42W 840 2'X2' HAVELLS	18
	INTEGRA LHEBGTP5PZ1W015 15W 830 HAVELLS	13
	ENDURA LINEAR NEO LHEWEBP5IN1W010 10W 830	12
	EXHUST FAN	02
	SPLIT AC (1 T)	03
	A.C STARTER (1.5 T)	04
	TEL. OUTLET	05
	6/16A PLUG (RP)	03
	6A PLUG (RP)	12
	3X6A PLUG (UPS)	13
	BRACKET FAN	15



OPTION -I

PROPOSED ELECTRICAL LAYOUT PLAN
OF **SHIFTING OF RISHRA BRANCH**
INDIAN BANK , UNDER ZONAL
CHINSURAH



KALPANGAN CONSULTANTS PVT. LTD.
FLAT NO.9, 4,DR.SUNDARI MOHAN AVENUE
KOLKATA-14,PH.NO.-9830162952

PROPOSED ELECTRICAL LAYOUT
OF **RISHRA BRANCH**



SCALE -



DATE -07/08/2022