

Indian Bank, Zonal Office Patna, invites competitive sealed tenders in the prescribed format on item rate basis system from the empanelled contractors of Indian Bank and Erstwhile Allahabad Bank for Interior Work at Kankarbagh 1 Branch (Metro) at O-97, Doctors Colony, kankarbagh, Patna Bihar, 800001.

Summary of tender is as under:

1	Name of work	Furnishing, Electrical & Data Cabling at Kankarbagh 1 Branch Patna Patna
2	Estimated Cost	Rs.10,37,003.00 + GST
3	Publication of Tender	10.02.2023
4	Last day of Submission of Tender	27.02.2023 up to 03:00 pm
5	Opening of Tender	27.02.2023 at 3:30 pm
6	Date of commencement	7 days from date of issue of letter awarding the Job
7	Time of completion of Job	Maximum 30 calender days from the date of issue of work order
8	Defect Liability Period	12 months from virtual completion of work as certified by the Architect, provided to satisfaction of Bank
9	Liquidated damage of Delay	If the work is not completed within the stipulated period of time an amount of Rs.1500/- to be deducted from each day of delay
10	Payment Terms	No Advance will be paid. Payment will be made on satisfactory completion of the job on the basis of actual measurement. Income tax will be deducted as per rules. Retention money 10% will be deducted from the bill and to be released after 12 months from the date of virtual completion provided no defects is observed during this period.
12	Retention Money	10%

The duly filled in offer completed in all respect and super scribing " Interior Work at Kankarbagh 1 Branch" on top and name, address & contact no. of the vendor at bottom left corner should be addressed to

The Zonal Manager
Indian Bank Zonal Office,
Budh Marg Patna, 800001

The Bank will not be bound to accept the lowest tender and reserves the right to accept or reject any or all the tender without assigning any reason whatsoever. Late / delayed tender shall not be accepted after due date and time of submission of tender.

Date:10.02.2023
Place: Patna

(Zonal Manager)



BILL OF QUANTITY OF ELECTRICAL WORKS N/W: PROVIDING ELECTRICAL WORKS FOR INDIAN BANK, DOCTOR COLONY BRANCH KANKARBAGH PATNA					
BRANCH					
A	SUB HEAD-I (WIRING)				
B	SUB HEAD-II (DISTRIBUTION BOARDS & PANELS)				
C	SUB HEAD-III (SUPPLY OF FIXTURES & FANS)				
D	SUB HEAD - IV (ERECTION OF FIXTURES)				
E	SUB HEAD-V (SUPPLY OF CABLE MAIN & SUBMAIN)				
F	SUB HEAD-VI (SUPPLY & MAKING OF EARTHPIES)				
TOTAL-					
GST AS APPLICABLE					
SL. NO.	ITEM OF WORK	UNIT	QTY	RATE	AMOUNT
SUB HEAD - I (WIRING)					
1	Wiring for light point/ fan point/ exhaust fan point/ call bell point with 1.5 sq mm FR PVC insulated copper condtr single core cable in surface/ recessed PVC conduit with modular switch, modular plate, suitable GI box and earthing the 3rd point with 1.5 sqmm FRLS PVC insulated copper conductor single core cable etc as required.	Each	47		
2	Wiring for ups light point with 1.5 sq mm FR PVC insulated copper condtr single core cable in surface/ recessed PVC conduit with modular switch, modular plate, suitable GI box and earthing the 3rd point with 1.5 sqmm FRLS PVC insulated copper conductor single core cable etc as required.	Each	4		
3	Wiring for A.C. Point with 2 x 4 sqmm FR PVC insulated copper conductor single core cable in surface/ recessed PVC conduit / PVC Casing - n Capping along with one no 4 sq mm FR PVC insulated copper conductor single core cable for loop earthing as required.	Mtr.	105		
4	Wiring for Light D.B,CKT with 4 x 6 sqmm FR PVC insulated copper conductor single core cable in surface/ recessed PVC conduit / PVC Casing - n Capping along with 2X6 sq mm FRLS PVC insulated copper conductor single core cable for loop earthing as required.	Mtr.	20		
5	Sub main Wiring between UPS to UPS feed DB with 2 x 6 sqmm FR PVC insulated copper conductor single core cable in surface/ recessed PVC conduit / PVC Casing - n Capping along with 1X 6 sq mm FRLS PVC insulated copper conductor single core cable for loop earthing as required.	Mtr	21		
6	Wiring for RAW Power with 4 x 6 sqmm FR PVC insulated copper conductor single core cable in surface/ recessed PVC conduit / PVC Casing - n Capping along with 2X6 sq mm FRLS PVC insulated copper conductor single core cable for loop earthing as required.	Mtr.	22		
7	Sub Main Wiring from LT Panel to UPS Panel with 4 x 10 sqmm FR PVC insulated copper conductor single core cable in surface/ recessed PVC conduit / PVC Casing - n Capping along with 2X6 sq mm FRLS PVC insulated copper conductor single core cable for loop earthing as required.	Mtr.	25		
8	Wiring for UPS and RAW feed computer point with 2 x 2.5 sqmm FRLS PVC insulated copper conductor single core cable in surface/ recessed PVC conduit / PVC Casing - n Capping along with one no 2.5 sq mm FR PVC insulated copper conductor single core cable for loop earthing as required. (3 outlets, i.e 3 points each with 1 switch and 3 sockets shall be under one circuit	Mtr.	305		



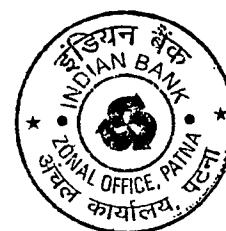
9	Light Circuit wiring with 2 x 1.5 sqmm FRLS PVC insulated copper conductor single core cable surface/ recessed PVC conduit / PVC Casing - n Capping along with one no 1.5 sq mm FR PVC insulated copper conductor single core cable for loop earthing as required.	Mtr	95		
10	15A/16A Power point Circuit wiring with 2 x 2.5 sqmm FRLS PVC Insulated copper conductor single core cable surface/ recessed PVC conduit / PVC Casing - n Capping along with one no 2.5 sq mm FR PVC Insulated copper conductor single core cable for loop earthing as required.	Mtr.	35		
11	Supply & fixing suitable size GI box with modular plate and cover in front on surface/ in recess i/c pvdg & fixing 5 pin 5/6 amp modular socket outlet and 5/6 amps modular switch, connection, painting etc as reqd.	Set	10		
12	Supply & fixing suitable size GI box with modular plate and cover in front on surface/ in recess i/c pvdg & fixing 6 pin 15/16 amp modular socket outlet and 15/16 amps modular switch, connection, painting etc as reqd.	Set	3		
13	Supply & fixing remote controlled call bell buzzer suitable for 230 V AC/ Battery operated with remote type bell push as reqd.	nos.	1		
14	Supply & fixing of computer point with 3 no. 5 pin 5/6 amp modular socket with modular type switch for UPS Power and 2 no. 5 pin 5/6 amp modular socket with modular type switch phenolic laminated sheet suitable size PVC/G.I. box. As per instruction of Bank/Ele.Er.as required.	nos.	12		
15	Supply & fixing AC controller unit consisting of one no 25 amp AC controller having overload protection starter, one no 20/25 amp SPN MCB and socket outlet, all fixed on a modular plate complete with metal box and recessed in wall as reqd.	Set	5		
16	Supply & fixing of approved make including square face plate and M.S. housing box with RJ-45 socket etc complete in all respect including cat-6 Data cable conduits, identification of the hub				
	a) RJ-45 socket	Set.	11		
	b) Cat-6 Data cable with PVC conduit	Mtr.	320		
17	Supply & fixing of approved make including square face plate and				
	a) RJ-11 socket	Set.	5		
	b) Supplying and drawing 2 pair 0.5 sqmm FR PVC insulated annealed copper conductor, unarmored telephone cable in the existing surface/PVC conduit as required.	Mtr.	85		
18	Supplying and drawing fixing 8 SWG copper conductor wire for loop earthing as required.	Mtr.	35		
19	Supply & fixing Commissioning of 20 line Net-working hub all complete as required.	Set.	1		
20	Supply & fixing Commissioning of 2 Meter Patch Cord as required, all complete as per requirement.	Set.	12		
21	Supply & fixing of following sizes of PVC conduit along with				
	a) 20 mm	Mtr.	20		
	b) 25 mm	Mtr.	25		
TOTAL SUB HEAD-I					
SUB HEAD - II (DISTRIBUTION BOARDS & PANELS)					
1	Supplying & Fixing following ways three pole and neutral sheet steel MCB DB, 415 volts on surface/ recessed complete with tinned copper busbar, neutral busbar, earth bar din bar detachable gland plate interconnections, phosphatised and powder painted i/c earthing etc as reqd. (But without MCB / RCCB/Isolator)				
a	4 Way double door VTPN DB.	Each	1		
b	16 Way double door SPN DB.	Each	2		



2	Supply & fixing 5 amps to 32 amps rating 240 V 'C' series MCB suitable for inductive load of following poles in the existing MCB DB complete with connections, testing and commissioning etc as reqd.				
a	10/16 A 10 KA SP MCB "B"	Each	38		
b	63 A 10 KA FP MCB "C"	Each	1		
c	40A 10 KA DP MCB	Each	2		
3	Supply & fixing of indoor cubicle extensible type fully compartmentalized Distribution panel suitable for operation on 415 volts 50 Hz 3 phase 4 wire AC distribution system, suitable for 35 KA short circuit rating, confirming to IP:42 degree of protection, made up of 1.6 mm thick CRCA sheet, wall/ floor mounted, dust & vermin proof enclosure, having hinged and earthed cover on front, having neoprene gasket/ katings stuck to the doors, duly painted with 65- 75 microns thick dry epoxy powder paint after 7 tank process of degreasing, derusting etc comprising of the following switchgears complete with all interconnections with suitable size of copper strip/hard drawn PVC insulated copper cable i/c keeping the panel in position, minor civil works as necessary, painting, sign writing etc complete as required (as per specifications of Panel attached)	Set	1		
	INCOMING:				
	a) 100 amp 4 pole MCCB not less than 25 KA having Thermo magnetic type release for a range of 80% to 100% for Overload and short circuit complete with rotary handle etc as reqd.: 1 no				
	b)63 amp 4 pole heavy duty I-II-I type cubicle changeover switch: 1 no				
	METERING:				
	a) Multifunctional meter displaying AV/PF & Hz along with 3 nos Suitable size CTs & HRC type protection fuse etc as reqd: 1 nos				
	c) LED type phase indicating lamp in phase distinguishing colors with HRC fuse : 6nos				
	BUS BAR:				
	Main Bus Bar: 4 strip 200 amp bus bar made of electrical grade aluminium strip enclosed in separate bus bar chamber, provided with DMC/ SMC bus bar support duly insulated with heat shrinkable sleeves in distinct colours as reqd: 1 set				
	Emergency Load Bus Bar: 4 strip 150 amp bus bar made of electrical aluminium copper strip enclosed in separate bus bar chamber, provided with DMC/ SMC bus bar support duly insulated with heat shrinkable sleeves in distinct colours as reqd: 1 set				
	OUTGOINGS:				
	40 amp, 10 KA D Series FP MCB 3 nos.				
	40 amp, 10 KA D Series DP MCB: 2 nos.				
	25 amp 10 KA C series SPN MCB: 7nos.				
	63 A rotary type Phase selector: 2 no				
	63 amp DP Manual Change Over For UPS Charging-1 nos.				
4	S/I/T/Commissioning of UPS PRIMARY & SECONDARY consist of:-25 Amps and 32Amps DP MCB with 2 Nos 32Amp power socke in MS Enclosure Box as required, all complete as per instructions of Bank / Architect.	Set	2		
	TOTAL SUB HEAD-II				
	SUB HEAD - III (SUPPLY OF FIXTURES & FANS)				
1	Supplying of 6W/9W LED batten suitable for indoor application.	Each	3		
2	Supplying of stepped type electronic fan regulator on the existing modular plate switch box i/c connection but excluding modular plate etc as reqd.	Each	2		
3	Supplying of 36W LED (2'X2') surge protection LED luminaire suitable for armstrong ceiling and grid ceiling complete with separate electronic drive/approved make by architect/Ele.Consultant etc as reqd.	Each	16		



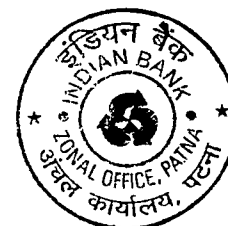
4	Supplying of recess mounted circular LED (dia-6") downlighter 9/12 Watt LED suitable for armstrong ceiling and grid ceiling complete with separate electronic drive/approved make by architect/Ele.Consultant etc as required.	Each	20		
5	Supplying, installation, testing & fixing of 1X36 W tube light fitting powder coated batten with PC tube.	Each	6		
6	Supplying of Exhaust fan 300mm sweep HEAVY DUTY EXHAUST	Each	3		
7	Supplying of 1200 mm sweep energy efficient ceiling fan, connection with 1.5 sqmm PVC ins copper condtr, testing, commissioning etc as reqd.	Each	2		
8	Supplying of oscillating and tilting type wall bracket fan of 400 mm sweep i/c fixing the same on wall, connection with 1.5 sqmm PVC insulated copper conductor, testing, commissioning etc as required.	Each	9		
TOTAL SUB HEAD-III					
SUB HEAD - IV (ERECTION OF FIXTURES)					
1	Installation, testing and commissioning of ceiling fan and regulator including wiring the down rod of standard length (upto 30 cm) with 1.5 sq. mm PVC insulated, copper conductor, single core cable, i/c pvdg earthing wire etc. as required.	Each	2		
2	Installation, testing and commissioning of 400MM wall fan including wiring with 1.5 sq. mm PVC insulated, copper conductor, single core cable etc. as required.	Each	12		
3	Installation of exhaust fan up to 300mm sweep in the existing opening, including making the opening / hole to suit the size of the above fan, making good the damages, connections, testing, commissioning etc. as required.	Each	3		
4	Installation, testing and commissioning of 1X36watt tube Light or 1 X 18/23 watt LED with tube /bulb and other all cover provide all fitting.	Each	45		
TOTAL SUB HEAD- IV					
SUB HEAD - V (SUPPLY OF CABLE MAIN & SUBMAIN)					
1	Supply & laying for sub main from L.T line & DG line following sizes and core PVC/XLPE insulated PVC sheathed, heavy duty, armored electrical cable with aluminum conductor for working voltage up to and including 1100 volts.(Conforms toIS:1554.part-1) with 8 no. SWG die bare copper conductor wire for loop earthing, proper laying on wall or roof, thumbnail clipping and use proper size cable gland for cable sport etc. as required, all complete as per instructions of Elec.Er. / Architect.				
	(i) 25 sq.mm, 3.5 core LT Cable	Mtr.	0		
	(ii) 35 sq mm,3.5 core LT Cable	Mtr.	40		
TOTAL SUB HEAD-V					
SUB HEAD - VI (SUPPLY & MAKING OF EARTHPIES)					
1	Earthing with CU earth plate 600mm x 600mm x 3 mm thick accessories and pdg masonry enclosure with cover plate having locking arrangement and watering pipe etc (but without charcoal or coke and salt) complete as required.	Set	3		
2	Extra for using charcoal and sal for copper earth plate electrode as required	Set	3		
3	Providing & laying earth connection from earth electrode with 4 mm dia copper wire in 15 mm dia. GI pipe from earth electrode as required.	Mtr.	34		
4	S/L 4 mm dia copper wire on surface or in recess as reqd.	Mtr.	38		
TOTAL SUB HEAD-VI					



BILL OF QUANTITY OF INTERIOR DESIGN AND FURNITURE WORKS FOR INDIAN BANK , AT DOCTOR COLONY BRANCH KANKARBAGH PATNA					
SI. No.	DESCRIPTION	UNIT	QTY.	RATE	AMOUNT
	Note-I: Anti-termites with Chloropyrphos of approved brand and make to be done on all wooden surfaces.				
	Note-II: Wherever painting items are mentioned, these always include the base coats of primer required and a minimum of 2 coats of the Final paint. Anti-termites with Chloropyrphos of approved brand and make to be done on all wooden surfaces.				
1	(FULL HEIGHT PARTITION ,UPS &STATIONARY) :- Providing and fixing full height double skin all partitions shall be Calcium Silicate Board /FRC with painted finish. Aluminum section shall be used Preferably 66mmx37 mm size 1.5 mm thick as internal frame , 66 mm thick metal stud partition comprising of a composite framework which includes a 48 mm branded stud of 0.55 mm thick and having two unequal flanges of 48 and 50 mm each placed at 610 mm center to center in 50 mm floor and ceiling branded channel with two equal flanges of 32 mm each fixed to floor and ceiling at 600 mm centre, with the help of nylon sleeves and wood screws or Anchor Fastner. Calcium Silicate Board boards of 12 mm thick square/tapered edge on both sides are then screwed to the studs and channels at 200 mm centres on both sides of the frame work, with 25mm long self drilling and tapping hilux screws having Phillips head with under cutter, for the first and second side boards respectively. The Board's joints are to be staggered to avoid through passage. and with one coats of putty, two coats of approved primer, and three coats of approved lustre paint (The Necessary door openings and switch box cutting to be provided before Jointing and Finishing as per instructions. Door Opening measurements will be deducted; switch box area will not be deducted) Edges of the facing boards are to be jointed and finished so as to have a seamless finish which includes filling and finishing with specially formulated Jointing Compound and 48 mm wide self-adhesive fibre tape. Cement primer(Oil/Water based)to be provided on the entire surface before putty and painting				
	All items necessary for completing the above mentioned work are deemed to be included in the scope of work, whether or not they are specifically mentioned in the B.O.Q / tender documents / drawings.as per design and instructions by Architect /Bank.	S.Ft.	180.00		



2	(FULL HEIGHT SEMI GLAZED PARTITION) Providing and fixing fullheight double skin partitions in cabins etc, with frames of 2" x 2" (finished size) seasoned hardwood members (hollock / malaysian sal) at max.partition with frames of 50mm x38mm (finished size) GI frame work Steel section /Aluminium section /50mmx38mm (finished size) intervals of 2'-0" x 2'-0" c/c with provision of bigger members at skirting, fixing to door frames, etc, all wood work to be treated with 1st quality anti-termite paint, and covered with 6 mm thick Plywood of approved make covered with various finishing layers as per design and details including 1 mm thick laminate. (All visible wood to be of 1st quality "ghambhar") and shall be painted with Premium 1st quality paint / polished as per instructions of Bank. Laminates shall have a number of horizontl / vertical grooves and the ply under such grooves shall be painted with approved colours. Opening for communication / conversation shall be provided as required as per detailed design and nothing extra shall be paid / deduction for the same.All doors including sliding doors / openable doors, with all fittings including ISI Marked Floor Springs, Bolts,Hinges etc., shall be included in the same price. Doors shall be of heavy sections matching the partition, and shall have 8.0 mm thick etched glass as per design. All items necessary for completing the above mentioned work are deemed to be included in the scope of work, whether or not they are specifically mentioned in the B.O.Q / tender documents / drawings.as per design and instructions by Architect /Engineer	S.Ft.	110.00		
3	(HALF HEIGHT PARTITIONS-FULLY PANELLED) (4'6" ht) The partition between the level 3'-0" to 4'6" have 12 mm thk Float glass .Providing and fixing half height double skin partitions in cabins etc, with frames of 2" x 2" (finished size) seasoned hardwood members (hollock / malaysian sal) at max. partition with frames of 50mm x38mm (finished size) GI frame work Steel section /Aluminium section /50mmx38mm (finished size)intervals of 1'-6" x 1'-6" c/c with provision of bigger members at skirting, fixing to door frames, etc, all wood work to be treated with 1st quality anti-termite paint, and 6 mm thick Plywood of approved make covered with various finishing layers as per design and details including 1 mm thick laminate. (All visible wood to be of 1st quality "gamhar") and shall be painted with Premium 1st quality paint / polished as per instructions of Bank.Ghambhar Frame shall be neatly painted / polished to a glossy finish with premium quality paint / polish. All necessary hardware such as hings, bolts, etc, and any other hardware required for the wicket door, shall be included in the price.Laminates shall have a number of horizontl / vertical grooves and the ply under such grooves shall be painted with approved colours. All electrical wires, accessories, telephone wires, etc, shall be run in the partition without any extra charges for the same.All exposed wooden surfaces are to be painted with Premium quality paint as per Specifications.	S.Ft.	70.00		
4	(HYDRAULIC DOOR CLOSER) Providing and fixing Hydraulic door closers of specified brand, all complete as per instructions of Architect / Employer.	Each	5.00		
5	(LOCKS) Providing and fixing "Godrej Night Latch" / "Godrej Mortice Lock" in required places, all complete with fixing, fitting, etc.	Each	5.00		



6	(EXECUTIVE TABLES) Providing and Placing new executives tables alongwith matching credenza of plan size (basic) as given below and credenza of plan size as given below, table top to be made of 19 mm thick plywood of approved make, edged with beading of 2" x 1-12" approx), cut to required shape, top of table to have 1.0 mm thick laminate, and teakwood beading to be polished to required colour and finish. Table to have a vertical modesty panel of 19 mm thick commercial plywood of approved make laminated/Plain with laminate (1.0 mm thick) from the outer side and painted with minimum 2 coats of premium 1st quality paint on the inner side. Modesty partition to have 1st quality beading on top as per design and specifications and Quality Enamel paint over appropriate priming coat on the internal surface.				
	Laminate to have a no. of grooves as per design and drawings. Achest of drawers shall support the table on 1 side (except in the case of staff tables of 4'-0" width, where the table shall be supported on one side by the credenza unit) integrally connected to the modesty partition, made of 19 mm thick commercial plywood of approved make, drawers to slide on drawer slides (EBCO / Equivalent), and made of 19 mm thick grade bwp board for all sides and bottom cabinet shutters of 19 mm thick commercial plywood of approved make, cabinet hinges to be t-type, self closing, EBCO / Equivalent, all edges of all blockboard / plywood to be sealed with 1st quality teakwood edging, including blockboard members touching the ground.				
	Drawers and cabinet shutters to be laminated on all external surfaces with 1.0 mm thick laminate, and painted on all visible internal surfaces with premium 1st quality enamel paint as Specified above.				
	All drawers and cabinets (both in tables and credenza) to provided with high quality 'Gogrej' locks, and high quality handles as per Item No. B above.				
	The other end of the table to be supported / integrated with a credenza unit of basic 2'-6" height, or as required, top, back and sides made out of 19 mm thick commercial plywood of approved make laminated/Plain, top to be finished with 1.0 mm thick laminate and teakwood beading o/o 1" x 1", carved as per design, and finished as per table Specifications above.				
	Drawers and cabinets, cabinet shutters, etc. to be as described in table specifications above, including all finishing details, and one glazed cabinet shutter in 1st Quality Teakwood frame, finished with laminate also to be laminated with 1.0 mm thick laminate grooves as / design.				
	Keyboard unit as per design and specification to be included in the rate.				
	Table edges should not be sharp it should be smooth finishes with EDGE Banding. (Rahau or equivalent. Company)				
	Laminate pasting pattern /design as per banks design guideline/detail/reference.				
a)	Bm table (6'-0" x 3'-0" x2'6")	Each	1.00		
b)	officer table (5'-0" x2'-6"x2'6")	Each	2.00		
c)	Credenza (3'-0"x1'-3"x2'-6"),(3'9"x1'-3" x2'-6")	Each	3.00		



7	(Full Ht cabinet & Sill Ht cabinet) :- Providing and erecting in position side cabinet units with shutters of approx size of 400mm deep x 750mm , high made of 19mm thick BWP grade block boards including intermediate shelves as per drawing / instructions. Exposed surfaces shall be finished with 1.00mm laminate of approved shade and make. Inner faces shall be painted with two coats of synthetic enamel paint of approved shade & quality over a coat of primer. Free edges of block board shall be finished with polished white or steam beech wood half round moulds (out of 20 x 20 mm sections). Inner faces shall be painted with two coats of synthetic enamel paint of approved shade & quality over a coat of primer. painted as directed. Inner faces of cabinet including shutters shall be painted in approved shade. Shutters will be hung by auto-closing hinges, locks, magnetic door catcher and satin finished S. S. handles etc. of approved make Skirting: 100mm high laminate of approved make & shade all as directed. (elevation area calculation)	SFT	107.00		
8	(WORKING TABLE / LEDGER COUNTER) Providing and fixing COMPUTER COUNTERS (formerly from asRUNING TABLE) made out of 19 mm thick commercial plywood of approved make and as per the attached drawing, all complete with 1.0 mm thick laminate (Greenlam/Century) on all visible surface, tabletops, customer top, etc, and all drawers etc. to be painter with 1 coat of primer and 2 coats of 1st quality enamel paint). 12 mm thick glass, MODIGUARD/ASAHI, branded, to be used on top of the COMPUTER COUNTER. Keyboard Tray to be provided on Special Keyboard Slides, and wristrest to be given. Drawer Slides to be used for all drawers. All locks to be of Godrej / Linc. All drawers, cabinets, Keyboard, etc. to be lockable. Footrest to be provided. (See Detailed drawing attached). The Front of the Computer Counter shall have decorative finishing in ply and laminate as shown in the drawing attached.	R.Ft.	13.75		
9	(CASH COUNTERS) Providing and fixing Cash Counters, to be made entirely of 19 mm thick commercial plywood for all surfaces, with the working top of 3'-6" width at 2'-6" level, and the customer top of 1'-6" width at 4'-0" level. Chest of drawers (lockable) with Godrej / Links to be provided and on cabinet just below drawer. The working top to be 3'-0" wide, fully detailed out with overhangs and supports as per detail drawings, all edges to be sealed with teakwood beading, polished / painted as per directions, all complete with footrest of ghambhar wool of section 4" x 2", all complete with all hardware, supporting clips, etc. The front of the Counter shall have decorative features, all complete, as per the designs and drawings attached.	RFT	9.00		
10	(COMPUTER CASH AND CASH CAGE PARTITIONS - SIDES & REAR) Providing and fixing cash cage partition, as per specifications given in Item No. 1a above, modified in height and the openings required to suit the requirements of cash cages, with the exception that in addition to 8.0 mm glass, aluminium mesh shall be given in all cash cage partitions, etc, from 4'-0" to 7'-0", along with supporting members all doors, as per specifications given in Item No. 1 above, all hardware for doors excluding door closers, godrej night latches which shall be paid for separately, all complete. The front of the cash cage shall be done in a decorative design, as shown in the attached drawings and details.	S.Ft.	220.00		



11	<p>Main Entrance Door: Full ht. Glass Partitions (WITH DOOR))Entrance side Providing and fixing 12 mm thk. full ht. Toughened Glass partitions with etched horizontal liner of 1"ht. and 1/2"clear space in between as per design ,Rate should be inclusive of additional Alluminium profile fixed in the flooring and above finished false ceiling level with necessary patch fittings as required to hold the glass partition. All exposed edges surfaces should be machine polished edges. The Rate shall be also inclusive of floor spring ,necessary hardware 3'-0"ht. Matt steel door handles with floor locking arrangement of Enox co. etc. Complete as per desigens and details from the Architects.The rate shall be Inclusive of Horizontal Etched Lining in between 3' to 6' ht. horizontal etched lining of 1"frost and 1/2" clear as per design etc. complete. Supplying and fixing banks logo – sticker as per drawing and design. Glass wall as per design and instruction by Architect /Enginee</p>	S.Ft.	96.00		
12	<p>(FALSE CEILING) Gypsum board false ceiling with Vertical band /drop of per detail drawing & instructions of Architect (Any alteration / change in drawing & design (as per given by architects) shall be bear by contactor at his/her on cost)</p>				
	<p>Gypsum board false ceiling</p>				
	<p>Providing and fixing in position Gypsum Board False Ceiling including Two coats of Plastic emulsion Paint of appd.quality as per manufacturer's specifications and instructions with 12.5 mm thick 'Gypboard' Screw-fixed to the underside Of suspended G.I. grid. G.I. grid should be Constructed and suspended from the main ceiling as per manufacturer's instructions and as per specifications using Original Co. Specified Framework Sections G.I.24 gauge The Gypboard should be fixed to G.I. grid with 25 mm long Drawali Screws. The 'Gypboard ' to be used should be 12.5mm thick tapered edge boards. The boards should Be taped and filled from underside to give smooth, seamless ceiling. The rate should include necessary additional ceiling sections and intermediate channels openings for light fixtures, A.C. ducts, vertical drops, offsets. etc. Additional Intermediate channels should be fixed to strap hangers for additional support to prevent strap hangers from buckling/swaying at every 1200 mm. Item to be completed in all respect including necessary sleeves for ducts finishing of joints cut outs supports for A.C. grills, light fixtures, speakers etc.Make: Gypusm board-India Gypsum. Paint make-Asian/ ICI, The rate should include necessary additional ceiling sections and intermediate channels openings for light fixtures, A.C. ducts, vertical drops, offsets.and with two coats of putty, two coats of approved primer, and three coats of approved lustre paint</p>	SQ.FT.	584.00		
11	<p>Modular False ceiling (Grid False Ceiling)</p>				



	<p>Modular False ceiling:- Providing and Fixing 15 mm thick densified regular edged eco friendly light weight calcium silicate false ceiling tiles of approved texture of size 595 x 595 mm in true horizontal level, suspended on inter locking metal grid of hot dipped galvanised steel sections (galvanising @ 120 grams per sqm including both side) consisting of main 'T'runner suitably spaced at joints to get required length and of size 24x38 mm made from 0.33 mm thick (minimum) sheet, spaced 1200 mm centre to centre, and cross "T" of size 24x28 mm made out of 0.33 mm (Minimum) sheet, 1200 mm long spaced between main'T' at 600 mm centre to centre to form a grid of 1200x600 mm and secondary cross 'T' of length 600 mm and size 24 x28 mm made of 0.33 mm thick (Minimum) sheet to be inter locked at middleof the 1200x 600 mm panel to from grid of size 600x600 mm, resting on periphery walls /partitions on a Perimeter wall angle precoated steel of size(24x24X3000 mm made of 0.40 mm thick (minimum) sheet with the help of rawl plugs at 450 mm centre tocentre with 25 mm long dry wall screws @ 230 mm interval and laying 15 mm thick densified edges calcium silicate ceiling tiles of approved texture in the grid, including, cutting/ making opening for services like diffusers, grills, light fittings, fixtures, smoke detectors etc., wherever required. Main 'T' runners to be suspended from ceiling using G.I. slotted cleats of size 25x35x1.6 mm fixed to ceiling with 12.5 mm dia and 50 mm long dash fasteners, 4 mm G.I. adjustable rods with galvanised steel level clips of size 85 x 30 x 0.8 mm, spaced at 1200 mm centre to centre along main 'T', bottom exposed with 24 mm of all Tsections shall be pre-painted with polyster baked paint, for all heights, as per specifications, drawings and as directed by Engineer-in-Charge.</p>	SQ.FT.	524.00		
13	<p>PANELING WITH LAMINATE FINISH :- Providing & Fixing laminate finish paneling for walls, columns etc. made out of 2" X 1" C.P.T. Wood frame work at every 1'6" c/c (vertical/horizontal) both ways, covered with 10mm thick ply.All exposed surfaces of the paneling shall be finish with approved color 1.00 mm thk laminate complete as per detail drawing & instructions of Architect. (upto 8'0" height/False ceiling)</p>	SQ.FT.	190.00		
14	<p>Panel box covering : Shall be made up of 19mm th BWP boarer free ISI marked -Fire resistant ply on all the sides. shutter shall be of 19mm th block board of BWPgrade ISI marked-Fire resistant (Minimum 2 hr.) and shall have holes 1/2" dia (25nos.) for ventilation and have glass piece (9"x9") for meter reading and shall be finished with 1.00mm laminate of approved shade on all exposed sides and inside finished with 0.8 mm thick laminated. The rate is inclusive of all locks of Godrej or equivalent make, SS tower bolts, SS handles, heavy duty SS hinges etc.all hardware complete. Prior confirmation shall be obtained from the officer in charge for all the hardware, locks and fixture etc, complete. (Note :- Box should not touch the ground)</p>	SQ.FT.	42		
15	<p>Removal of existing patation ,flase ceiling etc.debris from site, carrying and disposal of malba to dumpyard, as per bank direction</p>	LS	0.00		
TOTAL					
G.S.T(Extra as applicable)					
Notes:-					
Contractor to Note that:-					
a)	Footrests to be provided (laminated) with each table / counter without any extra charges, @ 1 per person.				
b)	Extra members, wherever required for stability / otherwise, to be provided with the required finish without ant extra charges.				
List of Approved Makes of Materials					
S.NO.	Description of material	Particulars		Make /Details	
1	Plywood/Block board (BWR)	6mm, 9mm, 12mm,		Kitply / Green panel /	



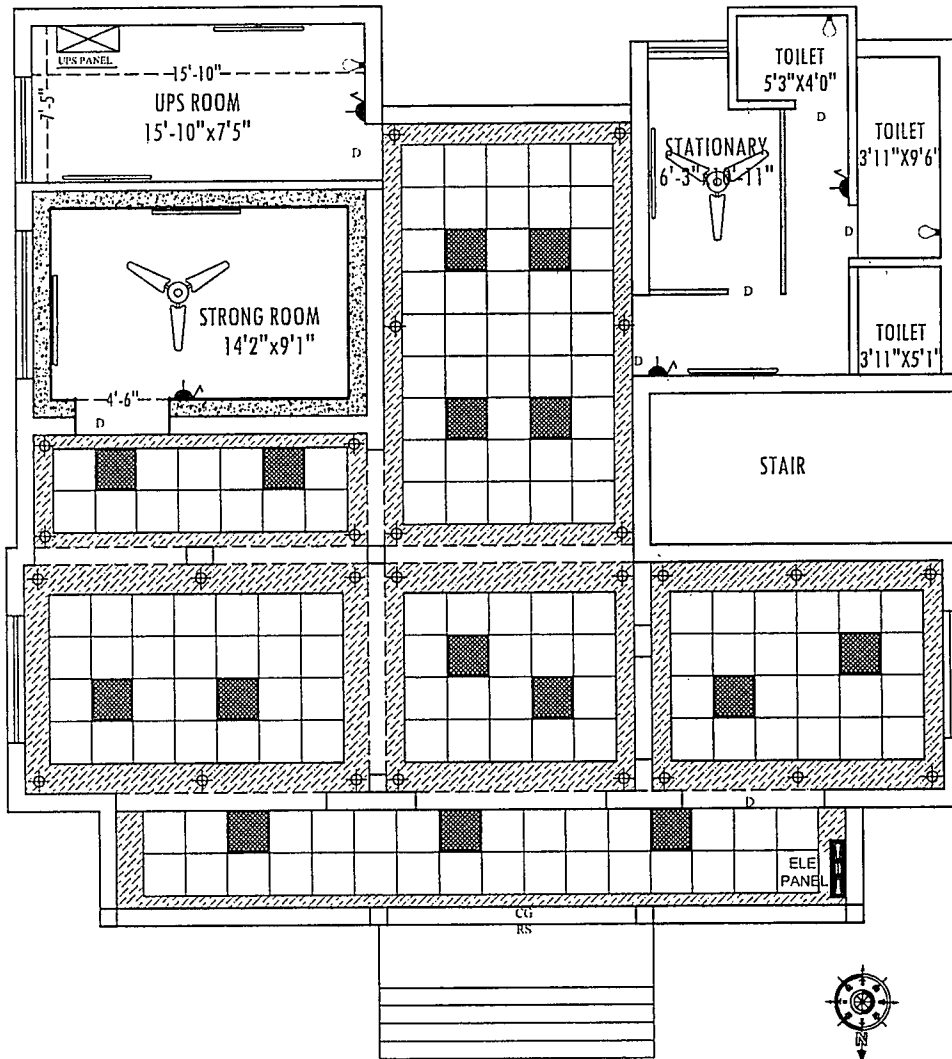
2	Laminate	1.0 mm	Greenlam/Merino/ NewmiKa/VIR
3	Glass	6mm, 8mm, 10mm, 12mm,	Modi /Saint gobain
4	Vertical blinds		Vista, Universal
5	False ceiling		USG Boral/Saint gobain/Hicem
6	Flush door shutter		Green ply /Century ply/ kitply
7	Veneer	4 mm	Century/ Green/
8	Lock/Door Closures/Hardware		Godrej/Ebco/Hardwyn
9	Screws		GKW / Mettle fold /Netfold
10	Paints		ICI/ Burger/ Nerolac/ Asian
11	AC grill		Air products/Omicron/Patrawala
12	Channels ,Slides, Fitting		Ebco/Hettich/ Godrej/dorset
13	Aluminum Section (If Required)	Powder coated finish	Jindal/Indal
14	Floor springs		Hyper/ Dorma/Hardwyn/dorset
15	Melamine Polish		Asian paint, Nerolac
16	Wood preservatives		Woodguard, PCI, Black Japan
17	Calcium Silicate Board	12mm	Hilux/ USG Boral



- Note :-
- * This drawing is property of FVC it must not be retained, copied reproduced in any form without written permission of FVC.
 - * Use architectural drawing for detail dimensions.
 - * In case of any discrepancy in this drawing or difficulty at site this office should be referred.
 - * Position of power and light points should be compared with the position of geysers and basin from p.h.c. drawing.
 - * Diameter of sub main conduit is 1" and remaining are of 0.75".

LEGEND

SYMBOL	DESCRIPTION	HEIGHT
	CEILING FAN	CEILING
	1X4'40W FLUORESCENT FIXTURE	7'0"
	WALL BRACKET/CFL	7'0"
	CEILING LIGHT	CEILING
	CHANDELIER	CEILING
	SWITCH BOARD WITH 5 AMP SOCKET	4'-6"
	SWITCH BOARD	4'-6"
	5 PIN SA PLUG WITH SWITCH	16'15/16"
	5 PIN 15A POWER PLUG	16'14/16"
	FIM FOR FREEZE & W/M FOR WASHING	16'14/16"
	25A A.C. POWER PLUG	1'6"
	CALL BELL PUSH SWITCH	4'6"
	CALL BELL BUZER	7'0"
	EXHAUST FAN	7'0"
	T.V. OUTLET	1'6"
	TELEPHONE OUTLET	1'6"
	FIRE DETECTION SYSTEM	
	DISTRIBUTION BOX	6'0"
	T.V. JUNCTION BOX	
	JUNCTION BOX	
	L.T. MAIN CONTROL PANEL	
	WAY FOR T.V. & TELEPHONE WIRING.	
	WAY FOR POINT WIRING. (25mm dia pipe)	
	WAY FOR POINT WIRING (19mm dia pipe)	
	WAY FOR SUB MAIN WIRING.	
	WAY FOR POWER POINT WIRING.	
	WAY FOR CIRCUIT WIRING.	



CLINT:-
UCO BANK

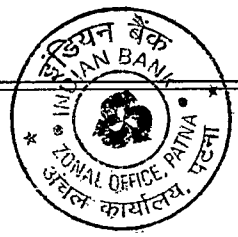
PROJECT: ELECTRICAL LAYOUT OF
INDIAN BANK
AT-DOCTOR COLONY BRANCH
KANKARBAGH, PATNA

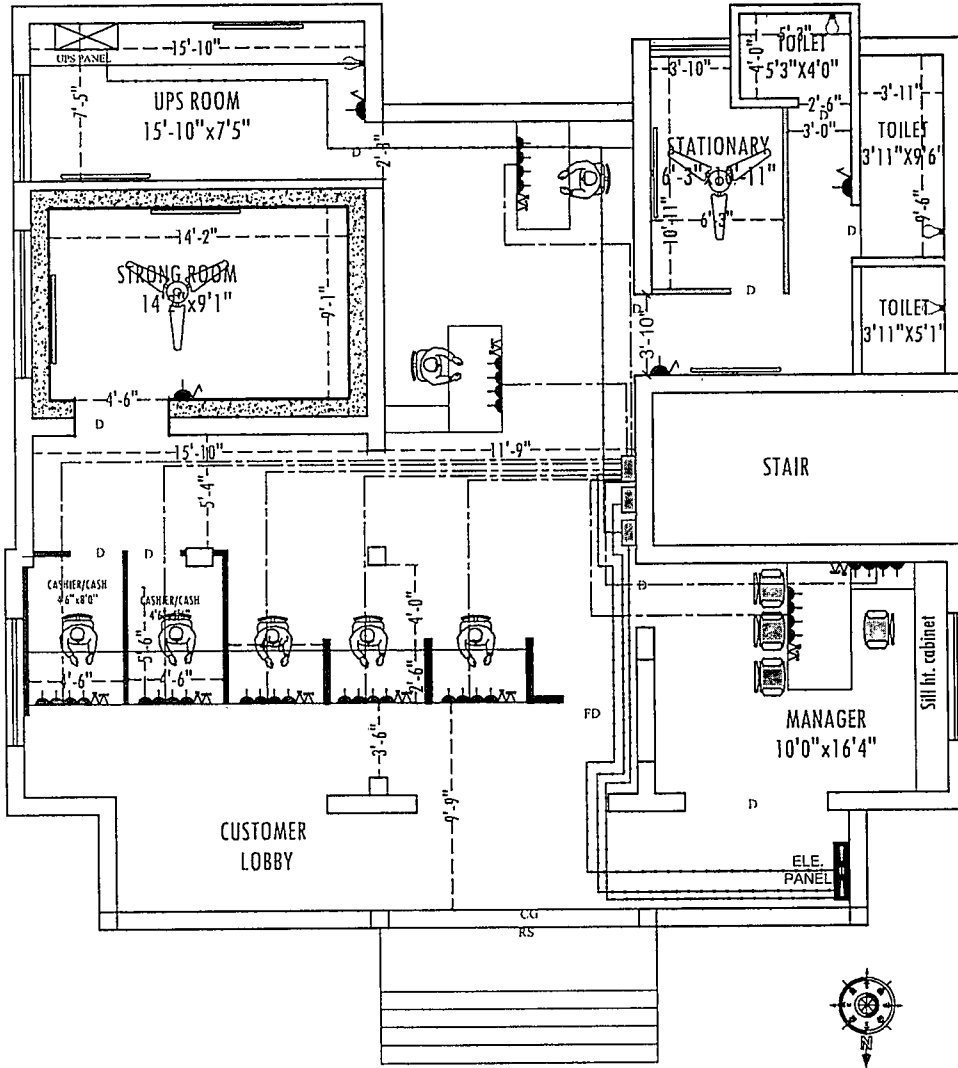
SHEET TITLE:-
**ELECTRICAL LAYOUT PLAN OF
FIRST FLOOR**

SCALE	DATE	DESIGNER	CHECKER
NTS	30-01-2023	Rahul kr.	

ARCHITECT:-
ARTCON DESIGN CONSULTANTS
ARTCON DESIGN CONSULTANTS
PLOT NO. 10, INDUSTRIAL AREA, PHASE II, GATE NO. 10, PATNA, BIHAR
INDIA
REGD. NO. 123456789
ARTCONDESIGNCONSULTANTS.COM

	HALF HT PARTITION
	7' HT PARTITION
	SEMI GLAZED FULL HT PARTITION
	SOLID FULL HT PARTITION





GROUND FLOOR PLAN

Note :-
 * This drawing is property of FVC it must not be retained, copied reproduced in any form without written permission of FVC.
 * Use architectural drawing for detail dimensions.
 * In case of any discrepancy in this drawing or difficulty at site this office should be referred.
 * Position of power and light points should be compared with the position of geysers and basin from p.h.c. drawing.
 * Diameter of sub-main conduit is 1" and remaining are of 0.75".

LEGEND		
SYMBOL	DESCRIPTION	HEIGHT
	CEILING FAN	CEILING
	1X4'-40W FLUORESCENT FIXTURE	7'-0"
	WALL BRACKET/CFL	7'-0"
	CEILING LIGHT	CEILING
	CHANDELIER	CEILING
	SWITCH BOARD WITH 5 AMP SOCKET	4'-6"
	SWITCH BOARD	4'-6"
	5 PIN 5A PLUG WITH SWITCH	1'6"/5'6"
	5 PIN 15A POWER PLUG	1'6"
	FIM FOR FREEZE & WIM FOR WASHING	1'6"/4'6"
	25A A.C. POWER PLUG	1'6"
	CALL BELL PUSH SWITCH	4'6"
	CALL BELL BUZZER	7'-0"
	EXHAUST FAN	7'-0"
	T.V. OUTLET	1'6"
	TELEPHONE OUTLET	1'6"
	FIRE DETECTION SYSTEM	
	DISTRIBUTION BOX	6' 0"
	T.V. JUNCTION BOX	
	JUNCTION BOX	
	L.T. MAIN CONTROL PANEL	
	WAY FOR T.V. & TELEPHONE WIRING.	
	WAY FOR POINT WIRING. (25mm dia pipe)	
	WAY FOR POINT WIRING. (19mm dia pipe)	
	WAY FOR SUB MAIN WIRING.	
	WAY FOR POWER POINT WIRING.	
	WAY FOR CIRCUIT WIRING.	

CLINT:-
 UCO BANK

PROJECT:-
 ELECTRICAL LAYOUT OF
 INDIAN BANK
 AT-DOCTOR COLONY BRANCH
 KANKARBAGH, PATNA

SHEET TITLE:-
 ELECTRICAL LAYOUT PLAN OF
 FIRST FLOOR

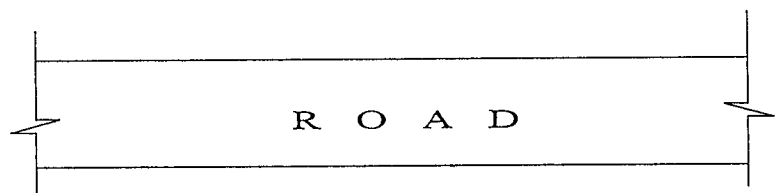
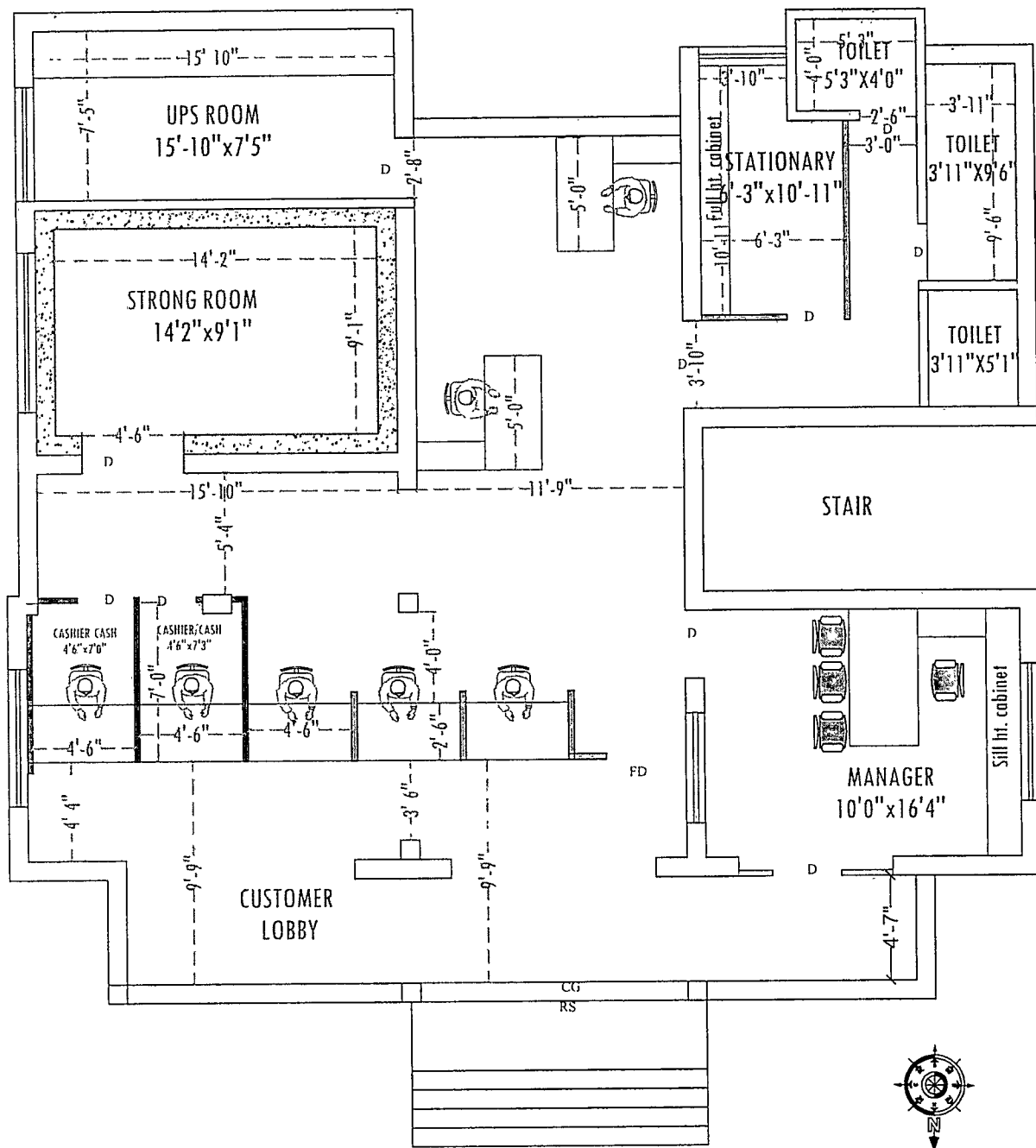
SCALE	DATE	DRAWN BY	CHECKED BY
MTS	30-01-2023	Rahul kr.	

ARCHITECT :-

 ARTCON DESIGN CONSULTANTS
 407/408/409/410/411/412/413/414/415
 GROUND FLOOR, PATNA, INDIA
 9000000000
 9000000000
 9000000000

	HALF HT PARTITION
	7' HT PARTITION
	SEMI GLAZED FULL HT PARTITION
	SOLID FULL HT PARTITION





GROUND FLOOR PLAN

TOTAL CARPET AREA= 1420.00 SQ.FT.(Approximate)

NOTE	PROJECT:-	REVISION:-	Sheet title :- FURNITURE LAYOUT PLAN				
HALF HT PARTITION	PROPOSED INTERIOR LAYOUT OF INDIAN BANK AT-DOCTOR COLONY BRANCH KANKARBAGH, PATNA	Date :-	Issues	Scale :-	Date :-	Drawn by :-	Checked by :-
SEMI GLAZED FULL HT PARTITION		07/11/2022		N.T.S	26/09/2022	Digesh kumar	
SOLID FULL HT PARTITION		08/11/2022		Architects :-			
7' HT PARTITION				ARTCON DESIGN CONSULTANTS ARCHITECTS ENGINEERS INTERIOR DESIGNERS COMPUTER AIDED DESIGN G-04 Laxmi Palace, Milra Compound, Boring Road Patna - 800001 +91 9931723771 amtkumar73@gmail.com +91 9386717226 artcondesignconsultants.com			

