

AVANT
GARDE
HE

DESIGN CONSULTANTS

#1281, Trichy Road, Coimbatore – 641 018, Tamil Nadu, India.

Voice: 91 422 2301246 Fax: 91 422 2301191

E-mail: ar_anand@consultant.com

TENDER FOR INTERIOR FURNISHING WORKS

TENDER FOR

AIR CONDITINING WORK, FALSE CEILING & MAIN DOORS,

AND ELECTRICAL FITTINGS WORKS

OF

M/s. INDIAN BANK – JEDERPALAYAM BRANCH

AT NAMAKKAL, TAMIL NADU.

ARCHITECTS

S. VIJAY ANAND., B.Arch., Mem COA., AIIA,

DESIGN CONSULTANTS

#1281, Trichy Road, Coimbatore – 641 018, Tamil Nadu, India.

Voice: 91 422 2301246 Fax: 91 422 2301191

**ARCHITECTURE PLANNING STRUCTURES
INTERIORS & LANDSCAPE**

**TENDER FOR THE FALSE CEILING & MAIN DOORS, ELECTRICAL FITTING WORKS ,
AND AIR-CONDITIONING WORKS, FOR
M/s. INDIAN BANK,AT JEDERPALAYAM BRANCH,NAMAKKAL,TAMIL NADU.**

SUMMARY SHEET

<u>Sl. No</u>	<u>Type of Work</u>		<u>Amount</u>
			<u>(Rs.)</u>
I	Interior Furnishing Works - Branch		
1	False Ceiling & Main Door Works		Rs.
2	Electrical Works		Rs.
3	Electrical Fittings and Fixtures		Rs.
4	Air-Conditioning Works		Rs.
	Total		
	<i>(In words: Rupees</i>		<i>only)</i>

Notes: All items are excluding of GST and other applicable taxes, unless specified

Notice: TENDERERS MUST VISIT THE SITE AND INSPECT FOR THEMSELVES THE ACTUAL WORKS TO BE CARRIED OUT BEFORE SUBMITTING THE TENDER,

Tender for the False Ceiling & Partition works
At M/s. Indian Bank, Jederpalayam Branch, Namakkal, Tamilnadu.

S.No	Particulars	Qty.	Unit	Rate (Rs.)	Amount (Rs.)
1	<p>FALSE CEILING (Gypsum Board) Providing and fixing suspended false ceiling, which includes providing and fixing G.I. Perimeter channels of size 0.55mm tk having one flange of 20mm and another flange of 30mm and a web of 27mm along with perimeter of ceiling, screw fixed to brick wall / partition with the help of nylon sleeves and screw at 610 mm centres. Then suspending G.I. Intermediate channels of size 45mm, 0.9mm thick with two flanges of 15mm each from the soffit at 1.22 mts centre to centre with ceiling angle of width 25mm x 10mm x 0.5mm tk fixed to soffit G.I. clean and steel expansion fasteners. Ceiling section of 0.55mm thickness having knurled web of 51.5mm and two flanges 26mm each with clips of 10.5mm are then fixed to the intermediate channel with the help of connecting clips and in direction perpendicular to the intermediate channel at 457mm centre to centre. 12.5mm tapered edge Star Brand / India Gypsum Gypboard (conforming to IS-2095-1982) is then screw fixed to ceiling sections with 25mm dry wall screws at 230mm centres. Screw fixing is done mechanically either with screwdriver or drilling machine with suitable attachment. Finally the boards Properly finished with topcoat as per Architect direction. (This includes painting) - Manager Cabin & Banking Hall</p>	395.00	Sft		
1.1	<p>FALSE CEILING (Armstrong) Providing & fixing in position false ceiling in Armstrong 600 x 600mm x 15/16 mm Dune supreme RH 99 Prima tile with tegular edge frame work as specified by Armstrong co. with suspends wherever required. Making necessary framework for A.C ducting, if any, and necessary cutouts for diffusers and light fittings, taping and finishing to proper line & level, including making grooves and trap doors for A.C unit in 18 mm thick M.R grade plywood with Stainless steel hinges & locks with moulding 1" x 1" for edges including finishing with white plastic emulsion paint etc.complete in all respects. (Note: - Only the plan area will be measured for payment. No payment will be made for cutouts, grooves, mouldings etc.)</p>				
a.)	Manager Cabin & Banking Hall	510.00	Sft		
2	<p>ENTRANCE DOOR Providing and fixing Entrance door (Glazed) in Silver anodised aluminium door section (Jindal make) in top and bottom, glazed with 12mm thick toughened glass of approved make with etching and frosting. Item to include floor springs, lock, all necessary hardware of stainless steel finish as approved by the project consultant/ Bank complete in all respects.</p>				
a.	Entrance Door - Size – 6'0" x 7'0" x 1 No	NIL	Sft		NIL

S.No	Particulars	Qty.	Unit	Rate (Rs.)	Amount (Rs.)
3	EXTERNAL FIXED GLASS (for branch up 7'0" ht) P/F fully glazed partition upto 8'0" ht. 8mm thk float glass with 4" x 2" aluminium box section 4 sided frames with powder coating of approved colour - 20 micron thk. (up to ht of 8'0")	NIL	Sft		NIL
4	FULL HT GLAZED FIBER CEMENT BOARD PARTITION (<i>Laminate finish</i>) Providing and fixing in position fully glazed fiber cement board partition comprising of GI floor channels 48 mm x 50 mm & 0.45 mm thk at 4'0" intervals fixed with 8mm tk fiber cement board on both sides & joints filled with joint tape & jointing compount. All openings & doors to be reinforced with GI intermeditate channels of .7mm thk. Both sides finished with 1mm thk laminate of approved shade & colour. Item to include door of size 3'0" x 7'0" with etching and frosting as per design and 2" x 2" aluminium section for door sides and glass sides and T.W door frame to take 8mm thick glass with etching and frosting. All exposed surfaces to be finished with Teak Wood lipping in melamine polish of matching laminate colour as directed including all necessary stainless steel finish fittings/ hardware, door closers, Godrej locks and wood preservative paint etc. as per list of approved material and as approved by the project consultant/ bank complete in all respects. Skirting to be provided as per archietct direction. (Note : In case of false ceiling, the vertical frames & supporting members to be fixed with true ceiling but the area of partition payable will be below the false ceiling only)				
a.	Back Partition (5'0" X 11'0"ht)	55.00	Rft		
b.	Side & above Entrance Door (5'0" X 11'0"ht)	NIL	Rft		NIL
5	FULL HEIGHT GLAZED DOOR Full ht.solid 35mmthk flush door of size as specified fully finished with 12mm thick glass with 1mm laminate with approved shade, provide door with door closer ,edge lipping lock and SS handle all complete including 4" x 3" wooden door frame.				
a.	at Back Partition (3'0" x 7'0") x 1 No	21.00	Sft		
TOTAL				Rs	
<i>(In Words: Rupees</i>					<i>Only)</i>

Tender for the Electrical Works at
At M/s. Indian Bank, Jederpalayam Branch, Namakkal, Tamilnadu.

S.No	Description	Qty	Unit	Rate	Amount
I <u>Point Wiring :</u>					
1)	Supply & Providing of Point wiring for light, fan, 6A switched socket, exhaust fans, etc., with 3 run PVC insulated FRLS Copper conductor(2R 1.5 sq.mm for phase/neutral & 1 R 1.5 sq.mm for earth) in 20 / 25mm, 2mm thick PVC conduit or caping & casing, with all accessories, to be concealed or exposed in wall / concrete, with chase cutting & filling, <u>including</u> supply & fixing of 6A 230V modular type switch/switched socket housed in manufactures Zinc passivated metal box with front plate to be concealed in the wall. (Maximum 8 mts of phase wire per point)				
a)	1 point controlled by one 6A switch	35	Nos		
b)	1 point controlled by two 6A switch	4	Nos		
c)	2 points controlled by one 6A switch	15	No		
d)	3 points controlled by one 6A switch	2	Nos		
e)	4 points controlled by one 6A switch	0	Nos		
f)	5 points controlled by one 6A switch	0	No		
g)	6 points controlled by one 6A switch	0	No		
h)	6A plug point controlled by one switch	10	Nos		
3)	Supply & Providing of circuit mains with 2 Runs 2.5 sq.mm for phase / neutral & 1Run 1.5 sq.mm PVC insulated FRLS copper conductor for earthing in 19 / 25 mm dia 2mm thick PVC conduit or caping & casing, with all accessories, to be concealed or exposed in wall / concrete, with chase cutting & filling	385	mtrs		
II <u>General :</u>					
a)	Rectifying, Testing, Erection and Commissioning of existing light points with fittings	5	Nos		
Total				Rs	
<i>(Rupees:</i>				<i>Only)</i>	

TENDER FOR THE ELECTRICAL FITTING WORKS
AT M/s. INDIAN BANK, JEDERPALAYAM BRANCH, NAMAKKAL, TAMIL NADU.

S.No	Description	Qty	Unit	Rate (Rs.)	Amount (Rs.)
I <u>Fixtures & Fittings : DB's</u>					
Supply, delivery at site, receiving, storing, handling, carriage at site, assembling, erection including the drop down rods, chains, hooks & accessories connecting, testing and commissioning of the following Ceiling / wall mounted light fixtures including the lamps etc complete. (All fixtures to be of Wipro/Philips/Havells make only and lamps of GE /Osram make only). (the rates are net and inclusive of cutouts and fixing).					
1)	Supply, fixing & connecting of following MCB DBs with necessary interconnections. Double Door type - concealed in wall as per site condition				
a)	Lighting MCB DB : incoming: 40 A 4 P MCB - 1 No : Outgoing 10 A SP MCB - 9 Nos: Enclosure: 4 way TPN DB	1.00	set		
b)	AC POWER MCB DB: Incoming; 40 A 4 P MCB 1 No Outgoing: 20 A 2 P MCB 7 Nos Enclosure: 6 Way vertical DB	1.00	set		
c)	RAW POWER MCB DB: incoming 40 A 2 P MCB 1 Nos Outgoing: 10 A SP MCB 8 Nos Enclosure: 4 way TPN DB	1.00	set		
II <u>Fixtures & Fittings : Lightings</u>					
a)	1 x 33 w LED square downlight Recess Mounted (Philips RC 375 B 30S) (2' x 2' fitting) (Incl Frame)	14	No		
b)	1 x 22 w Philips Square Ultraslim (AL body) 9"x 9"	14	Nos		
c)	1 x 18 w LED Ultraslim Round light (Al body) BM cabin	12	Nos		
d)	1 x 5 w LED Ultraslim spot light (Al body)	0	Nos		
e)	1 x 7 w LED Round Spot light COB+ (Al body)	0	Nos		
f)	CG Wall Mount Fan (Crompton / Usha)	9	Nos		
g)	48" CG Highspeed Ceiling Fan (Crompton / Usha / Havells)	3	No		
h)	1 x 21 w LED Tube fitting Smart Bright 4feet (Al body)	0	No		
i)	Exhaust fan (9" exhaust almonored) Including provision for Opening & plstring wherever required) (Toilet & UPS Battery Room)	0	Nos		
II <u>General :</u>					
a)	Rectifying, Testing, Erection and Commissioning of existing light points with fittings	5	Nos		

TOTAL AMOUNT

Rs.

(In words: Rupees

only

Tender for the Air conditioning Works at
At M/s. Indian Bank, Jederpalayam Branch, Namakkal, Tamilnadu.

PROPOSAL FOR NEW GENERATION PACKAGED AC's / DUCTED SPLIT AC's
FITTED WITH POWER SAVER SCROLL COMPRESSORS.

ANNEXURE – 1

BASIS OF DESIGN

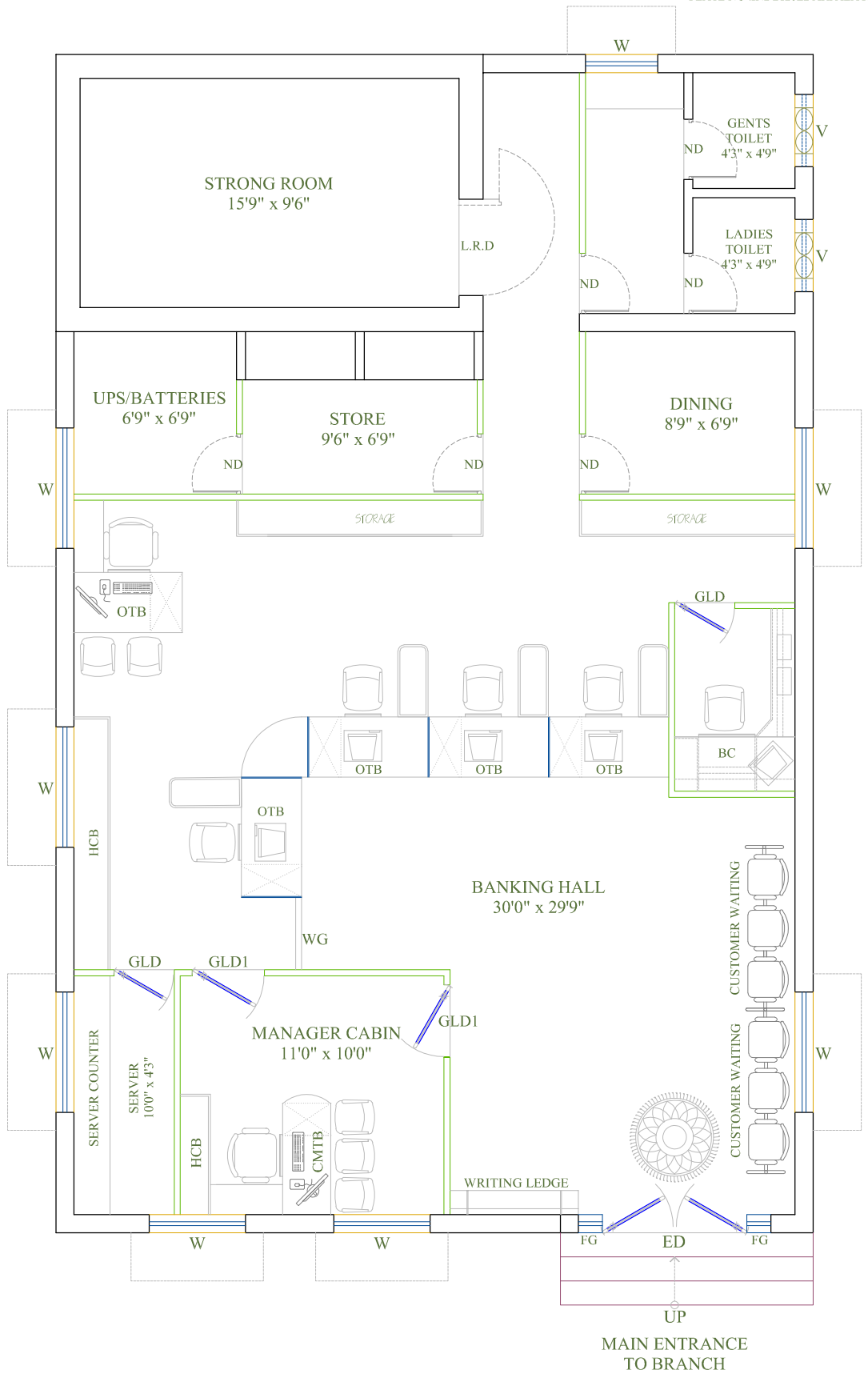
Area to be air conditioned	880.00 Sft
Outside Design conditions	100 F DB and 83 F WB
Inside Design conditions	75 F + 2% DB and RH not exceeding 50%.
Lighting Load	1 watts per Sqft.
Equipment Load	9 Computers + 3 Printers
Occupancy Factor	75 persons
Fresh Air	One Air changes per Hour
Power Supply	415 V, 50 Hz, 3 PH. To be shaded by using sun control
Exposed Glass	films or by thick curtains.
Exposed Roof	To be insulated by 50 mm thick TFquality thermocole or equivalent material. (In case of exposed roof.)

Note:

Contractors must inspect the site prior to submission of rates, and quote rates accessing site condition inclusive of additional stands, practical length of copper and drain pipes etc complete.

ANNEXURE – 2
SCOPE OF WORK :

S.No.	Description	Unit	Qty	Rate	Amount
I BANKING PREMISES					
1	1.0 TR High Wall split air conditioner Inclusive of 4 kva stabilizers, cordless Remote of Voltas/Blue star/Hitachi orEquivalent make, with sufficient copper Piping and drain pipe including transport, Erection and commissioning at site etc Complete. (with copper coil, 3 star rating inverter AC) (DZM-1, Discussion-1&2 & WS west side-1no)				
a.	for BM Cabin	No	1		
b.	for Banking hall	No	1		
c.	for Server room	No	1		
2	1.5 TR High Wall split air conditioner Inclusive of 4 kva stabilizers, cordless Remote of Voltas/Blue star/Hitachi or Equivalent make, with sufficient copper Piping and drain pipe including transport, Erection and commissioning at site etc Complete. (with 3 star rating INVERTOR MODEL) (ZM cabin-1, common zm corroidor-4 nos, WS-west side-7 nos, DZM-2-1 & WS-east side - 8 nos).				
a.	for banking hall	No	3		
3	2.0 TR High Wall split air conditioner Inclusive of 5 kva stabilizers, cordless Remote of Voltas/Blue star/Hitachi or Equivalent make, with sufficient copper Piping and drain pipe including transport, Erection and commissioning at site etc Complete. (with 3 star rating INVERTOR MODEL) (Board room -2nos).				
a.	for banking hall	No	0		
TOTAL AMOUNT				Rs	
<i>(Rupees:</i>				<i>Only).</i>	



**EXISTING INTERIOR LAYOUT
FOR M/s. INDIAN BANK,
AT JEDARPALAYAM BRANCH,
NAMAKKAL.**

DETAIL:
NORTH

TITLE: EXISTING INTERIOR LAYOUT
GROUND FLOOR

SCALE: 2'0" x 2'0" GRID

DRAWN BY: SAKTHI

DATE : 15.05.2023

CHECKED BY: ANAND

ALL MEASUREMENTS ARE IN FEET & INCHES. THE DRAWING STRICTLY TO BE READ AND NOT MEASURED.

ARCHITECT: S.VIJAY ANAND B.Arch, Mem COA, AIIA.

DESIGN CONSULTANTS
ARCHITECTURE & INTERIORS
#1281, TRICHY ROAD
COIMBATORE - 641018
Ph: 301 246, Fax 301 191

ANY QUERIES IN THE DRAWING SHOULD BE CLARIFIED PRIOR TO EXECUTION. THIS IS THE PROPERTY OF DESIGN CONSULTANTS AND SHOULD BE RETURNED AFTER EXECUTION. THIS MUST NOT BE USED WITHOUT PERMISSION.

- LEGENDS**
- | | | | | | |
|-----|----------------------|-----|-------------------------|------------|---|
| ED | ENTRANCE DOOR | FCB | FULL HEIGHT CABINET | JAPR | JEWEL APPRAISER |
| GLD | GLAZED DOOR | HCB | HALF HEIGHT CABINET | RC TYPE II | RUNING COUNTER TYPE II (STRAIT PROFILE) |
| ND | NORMAL DOOR | MTB | MANAGER'S TABLE | CC | CARPET |
| LRD | LOCKER ROOM DOOR | OTB | OFFICER'S TABLE | | |
| CC | CASH (COUNTER) CABIN | POF | PASSING OFFICER'S TABLE | | |