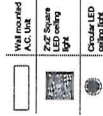


MANOROMA CONSULTANCY

Architect and Interior Designer
 Bana Office: C-2, Kubera Gulshan Co-op Housing Soc., Panhar Chowk, Aundh, Pune-411007.
 Mumbai Office: A-302, Green Hodges, Royal Complex, Elskar Road, Borivli (W), near Dattodi Hotel, Mumbai-92.
 Email: manoroma@gmail.com
 Mobile: 972000555



- NOTES**
1. Measurements are based on the British Metric System.
 2. All levels are in meters to principal Datum (mPD) unless noted otherwise.
 3. No to scale the drawing.
 4. For construction details to be followed.
 5. Do not use for construction unless expressly permitted.
 6. Any discrepancy in the drawing should be immediately brought to the notice of the architect and a revised drawing must be prepared and signed by the Architect.
 7. These drawings should be followed in reference with constant reference to other working drawings whenever necessary.
 8. All dimensions are from unfinished to unfinished surfaces.
 9. Large scale details supercede the smaller scale details.
 10. These drawings are meant for execution details and any deviation from statutory approval/approved designs should be brought to the notice of the local authorities and all such changes shall be approved from the local authorities by the architect in the association of such changes on the site.

COPYRIGHT
 Copyright in this document and all proprietary rights in the information it contains belong to Manoroma Consultancy.
 It is a condition of the supply of this document in whatever form, that the recipient shall hold it in confidence and shall not duplicate or otherwise use the information in part or in whole for its contents without the written consent of Manoroma Consultancy.

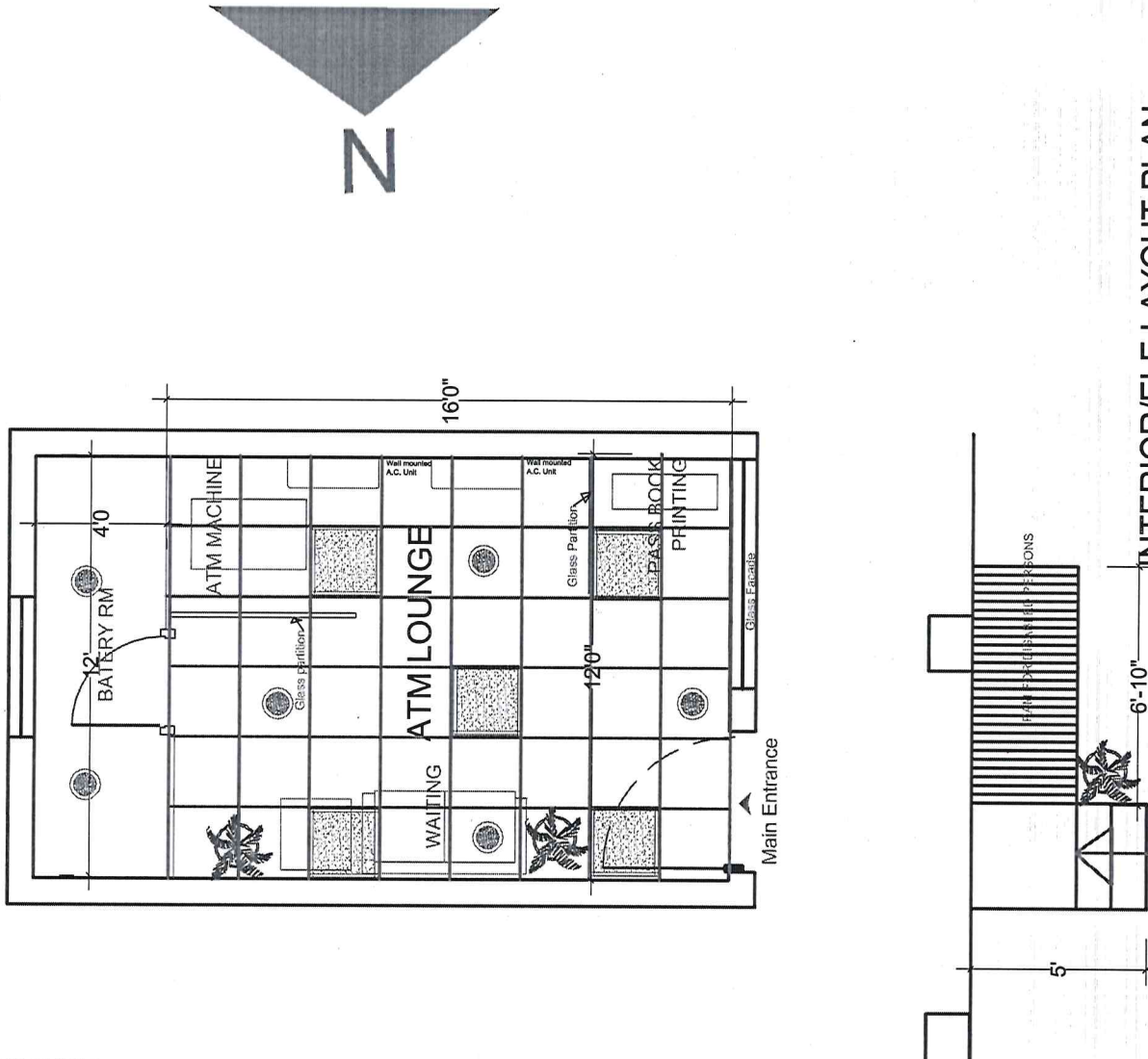
Project Title:
 INTERIOR LAYOUT PLAN OF INDIAN BANK, SOLAPUR BR. DRM OFF ATM

Drawing Title:
 Terrace Layout Plan

Drawn by: Ar. R.Y.M. Drawn on: 18.2.2021

Disc. no. 01 Disc. date

Scale North



INTERIOR/ELE LAYOUT PLAN

