

SUMMARY OF BOQ FOR INTERIOR FURNISHING WORK AT INDIAN BANK, FIROZABAD		
A	SCHEDULE - 'A'	
1	INTERIOR FURNISHING WORK	
	TOTAL	
	* GST EXTRA AS APPLICABLE	



BOQ FOR FURNISHING WORKS AT INDIAN BANK, FIROZABAD					
S.NO.	DESCRIPTION OF ITEM	QTY	UOM	RATE (Rs.) (Excl. GST)	AMOUNT (Rs.) (Excl. GST)
1	PARTITIONS				
	Frame Work: Providing and fixing in position Full Height partition in framework of 600 X 600 mm grid (horizontally and vertically) comprising of 50mm X 50mm heavy duty GI Box Sections (1.6 mm) with 8 mm thick ply on both sides finished with 1 mm thick laminate as mentioned below.				
	Note: a) In case of false ceiling, the vertical GI members to be fixed to RCC ceiling but the area of partition payable will be below the false ceiling only. b) Measurement of height shall be taken from finished floor only, in case of varying heights on either side of partition, average height shall be considered. c) Openings/ door/ glass shall not be measured for payment and shall to measured and paid under separate relevant item.				
	Laminate: 1.0 mm thick matt laminate (shade and design as per Bank's Scheme) pasted over MDF with approved adhesive. Laminates shall be combination of 2 or more colour as per bank's guideline to be approved from the bank prior to application. Partition shall have 100mm high skirting from the finished floor in Bank's approved colour and a 100mm high top band from the soffit/ceiling/visible top of the partition in Bank's colour scheme. Remaining Area to be covered with laminate				
	The necessary openings and provisions in the frame work for Electrical Conduits, modular electrical boxes, AC Grills & pipes, AC Ducts / louvers, doors / glazing etc. should be provided as per site requirements while keeping the structural integrity and strength of the framing intact. The GI frame members shall be fixed rigidly to the floor, columns, RCC Ceiling and beams. Note: In case of false ceiling, the vertical GI members of the frame should be fixed / screwed / grouted rigidly on the Roof / RCC ceiling but the area of partition payable will be measured from the finished floor up till the false ceiling only. In case of varying heights on either side of partition, average height shall be considered.				
1a	Manager Cabin Partition (Partly Glazed - Full Ht.)	175.00	Sq. Ft.		
	Providing and fixing both side laminated partly glazed partition using framing, MDF and laminate as per details mentioned in Sr. No.1. The partition shall be solid till 3'-6" height and glazed with 6mm thick clear float glass in size 3'-6" (H) & 4'-0" (W) or of appropriate size as per site requirements. All sides of the glazing must be provided with teakwood beading on both faces and finished with 2 coats of melamine polish. Solid partition to be provided over the fixed glazing till soffit of false ceiling / roof / RCC Ceiling. All exposed edges shall be fixed with lipping of appropriate thickness enough to cover the entire exposed edges and frame opening for fixed glazing / doors chowkhat / windows (75mmx75mm thick sections or as per site) with 2 coats of melamine polish. The rate quoted must be inclusive of the 32-35mm thick door (Size - 7'-0" X 3'-0") made with commercial plywood / board of approved make with 1.0 mm thick matt finish laminate pasted over plywood along with skirting and top band on both sides of the door as per bank's colour scheme along with making 8-10mm glass opening of size 18"(W) X 48"(H) positioned at the horizontal centre & 5'-0" height for visibility with proper teakwood framing and polishing. The exposed edges of the door must be finished with teakwood lipping with 2 coats of melamine polish. Item shall also include supply and installation of frosting film of aproved make with approved artwork. Film shall be of approved make, self-adhesive with bubblefree installation to be done on clean glass. The rate quoted must also include installing / affixing all necessary fittings like 4 Nos. SS Butt Hinges (100mmx5.5mm size), screws, Hydraulic Door Closer, Mortise Lock Assembly, SS Handles on both sides & Brass Door Stopper etc as per approved makes.				
1b	Cash Cabin Partition (Height 7'-6")	170.00	Sq. Ft.		



	Proving and fixing both side laminated Solid partition for cash cabin using framing, MDF and laminate as per details mentioned in Sl. No.1. The partition shall be solid till 4'-0" height and thereafter an opening of 2'-6" Height & 2'-6" width (or of appropriate size as per site requirement) for Aluminium Decorative Grill (12mm thick having hexagonal openings) which shall be provided with double sided 2 coat melamine polished teakwood beading. Rest of the height shall be solid partition till the height of 7'-6" from the finished floor. All exposed edges of MDF shall be fixed with teakwood lipping of appropriate thickness (75mmx75mm thick sections or as per site) enough to cover the entire exposed edges and frame opening for aluminium grill / doors chowkhat / windows etc.) with 2 coat melamine polish.				
	The rate quoted must be inclusive of the 32-35mm thick door (Size - 7'-0"x3'-0") made with commercial plywood / board of approved make with 1.0 mm thick matt finish laminate pasted over plywood along with skirting and top band on both sides of the door as per bank's colour scheme along with making 6mm thk glass opening of size 18"(W) X 48"(H) positioned at the horizontal centre & 5'-0" height for visibility with proper teakwood framing and polishing. The exposed edges of the door must be finished with teakwood lipping with 2 coats of melamine polish. Item shall also include supply and installation of frosting film of aproved make with approved artwork. Film shall be self-adhesive with bubblefree installation to be done on clean glass.				
	A 2" deep slip tray made of 11mm/12mm MDF covered with 1.0 mm thick laminate with edges finished with teakwood beading and 2 coats of melamine polish to be affixed at a height of 4'0" from the finished floor on the side partition adjacent to the passing Officer's counter at an appropriate slot to ensure convenient usage by both staff members. The slip tray must be 6" wide 10" long and must be positioned such that it must be emanating 4" on either side of the partition. The front edges of the partitions i.e., the edges visible to the customers, shall be finished with 1.0mm thick laminate of Bank's approved colour . The rate quoted must also include installing / affixing all necessary fittings like 4 Nos. SS Butt Hinges (100mmx5.5mm size), screws, Hydraulic Door Closer, Night latch, SS Handles on both sides & Brass Door Stopper etc as per approved makes.				
1c	Low Height Partition (Height 4'-0") - Between working Counters, cubicles & support for Flap door)	120.00	Sq. Ft.		
	Proving and fixing both side laminated solid partition using framing, MDF and laminate as per details mentioned in Sl. No.1. The partition shall be solid till 3'-0" then glazing with 8-10mm thick clear float glass of 1'-0" Height & supported on 4" wide solid partition pillars on both sides of the glass. The exposed edges of the glass shall be bevelled, grinded and machine finished to render smooth edges. The glass in the partitions shall be fixed with beading / moulding on both sides. All exposed edges of partition shall be fixed with teakwood lipping of appropriate thickness (75mmx75mm thick sections or as per site) enough to cover the entire exposed edges and frame opening for fixed glazing / doors / windows) with 2 coat melamine polish. Item shall also include supply and installation of frosting film of aproved make with approved artwork. Film shall be self-adhesive with bubblefree installation to be done on clean glass.				
	The length of the partitions between the counters shall be 3'0"				
1d	Solid Partition (Full Ht.) - Both Side Laminated	380.00	Sq. Ft.		



	Solid partition including Strong Room partition up to 7'6" height:- Providing and fixing both side laminated solid partition using framing, MDF and laminate as per details mentioned in Sr. No.1. All exposed edges of partition shall be fixed with teakwood lipping of appropriate thickness enough to cover the entire exposed edges and frame opening for doors chowkhat (75mmx75mm thick sections or as per site) with 2 coats of melamine polish. The rate quoted must be inclusive of the 32-35mm thick door (Size - 7'-0"x3'-0") made with approved plywood / board of approved make with 1.0 mm thick matte finish laminate pasted over plywood along with skirting and top band on both sides of the door as per bank's colour scheme. The rate quoted must also include installing / affixing all necessary fittings like 4 Nos. SS Butt Hinges (100mmx5.5mm size), screws, Hydraulic Door Closer, Mortise Lock Assembly, SS Handles on both sides & Brass Door Stopper etc as per approved makes. The exposed edges of the door must be finished with teakwood lipping with 2 coats of melamine polish.				
1e	Solid Partition (Full Ht.) - Cement Fiber Board for UPS Room and electrical panel	150.00	Sq. Ft.		
	Providing and fixing both side solid partition using framing and laminate as per details mentioned in Sl. No.1. The skin of the partition shall be made out of 10mm thick cement fiber board and finished with 1mm thick laminate of approved shade and scheme on the customer side (visible to customers) and 2 coats of ivory white enamel paint on the internal side (not visible from the customer lobby). The rate quoted must be inclusive of the providing one pane door for UPS room (Size - 7'-0" x 2'-9") & 2 panes door (Size-7'-0" x 2'-0" for electrical panel) or door sizes as per site requirements in combination of 6mm thk cement fibre board and 19mm thick approved block board pasted / screwed together to form a single entity and finished as per matching scheme. The block board shall be on the outer side and shall be pasted with 1.0 mm thick matt laminate along with matching skirting & top bands as per bank's scheme and the cement fiber side of the door shall be on the inside with 2 coats ivory white enamel paint over a coat of primer. Exposed edge of door thickness shall be finished with teakwood lipping & melamine polish.				
	Item shall include installing / affixing 12" X 6" aluminium louvers at the horizontal centre of the door panes at suitable height along with all other necessary hardware & fittings such as 4 Nos. SS Butt Hinges (100mmx5.5mm size), screws, mortice lock / brass tower bolt, SS Handles on both sides, magnetic ball catchers etc of approved makes. Note - For the purpose of contractor's payment in case of Electrical panel cabinet, only front elevation area shall be measured. BUT the partition shall be erected till soffit of the actual ceiling along with the board concealing the entire area and not just till the false ceiling.				
1f	Single Skin Partition Bove False Ceiling	0.00	Sq. Ft.		
	As of the above but Providing and fixing single skin partition above false ceiling(where false ceiling is provided only on one side) for a height of up to 600mm or near about soffit of roof using aluminium frame as specified above along with 6mm thick Commercial ply wood lined on only one side and lining with 1mm thk laminate of approved shade and amke along with grooves				
1g	Flap Door (4'0" High)	15.00	Sq. Ft.		
	Providing and fixing of flap door using 19mm thick block board of approved make laminated on both sides with 1mm thick laminate of approved shade as mentioned above. The exposed edges of the board shall be finished with teakwood beading of appropriate thickness (enough to cover the entire exposed edges). The rate quoted must also include a vertical brass tower bolt assembly, 2 Nos. SS Butt Hinges (100mmx5.5mm size), screws & magnetic ball catchers etc of approved makes. There shall be 100mm high skirting at the bottom of the door with 1mm lamination in Bank's approved colour & a 100mm high top band of Bank's Approved colour at the vertical top of the door so as to match the surrounding scheme.				
2	COUNTERS & TABLES				



	Providing & Fixing Box type Tables and counters of size mentioned below as per branch drawing and layout. The tables / counters are made out of 19mm thick approved ply / block board frame work for top, verticals, apron, sides, drawer unit with shelves, shutters, customer top, foot rest. The sides, sliding shutters, front apron of drawer unit shall be made out of 12.0mm thick approved ply while backs & bottom of drawer unit shall be made with 6mm thick approved ply. The drawer unit of 450mm width x 750mm height x 500mm depth or size approved by the bank shall be placed on a suitable side of the table / counter as per layout. The drawer unit shall consisting of 3 nos. drawers of equal height to cover the entire height of the unit & each must be 450mm deep OR of size & number as approved by the bank. Each drawer shall have SS handles with multipurpose concealed lock. The drawers shall be fixed with telescopic SS sliding channels of approved make with easy push-pull mechanism.				
	A uniform 100mm high skirting shall be provided at the visible bottom of the side unit with 1.0mm thick laminate of Bank's approved colour . A fixed footrest made with T.W. member of size 4"x1.5" finished with french polish shall also be provided at the bottom of the inside of the tables / counters at a comfortable height. The working top of ALL counters / tables shall be provided with 10mm thick clear glass on top with edges bevelled and machine finished to render smooth edges. Grooves / openings for cable managers shall also be provisioned in the table and glass along with supply & fixing of cable manager. The shape of the top glass shall be prepared / cut in such a manner that the entire surface of the working top of the table / counters should be covered by the top				
	All the open surfaces of the tables / counters / drawer units shall be completely covered with 1mm thick laminates. The front apron and visible side apron(s) of the counters / tables shall be provided with 100mm top band of 1.0mm thk laminate of Bank's colour scheme & 100mm skirting of of 1.0mm thk laminate of Bank's approved colour . The remaning area shall be provided with 1.0mm thick laminate The counter / table top shall be provided with 1.0mm thick laminate of Bank's approved colour . The other exposed edges shall be finished with teakwood lipping & 2 coats of melamine polish. All inner surfaces shall be finished with approved 0.8 mm thick laminate of ivory / white shade of approved make.				
	All table / counters shall be provided with sliding key board unit of size 12"x20" made of 19mm thick approved board finished with 1.0mm laminate and mounted with telescopic channels of approved make on the sides made out from 12mm thk approved board with 1.0mm thick laminate All exposed edges to be finished with teakwood beadings of appropriate size and 2 coats of melamine polish along with all other finishes / hardware / fittings etc required to complete the job.				
	For CASH COUNTER- Same as above but the cash counter shall have two working tops viz. one working top at height of 2'-6" for staff & other, the customer top, at height of 4'-10" for customer use. The customer top shall be 450mm wide of length as mentioned below and shall be fabricated such that it is projected 150mm outwards i.e. towards the customer. The rate quoted must include full front portion and customer top of mentioned height and style made out of 19mm approved ply and 1.0mm thick laminate of design as approved by the Bank, along with 10-12mm plain float front glass which should be 3'-0" high over and above the customer top and of required length as mentioned below. A support partition shall also be provided on top of the glass till a height of 7'-6" from the finished floor. The partition over the glass shall be made out of 19mm thk approved board finished with 1.0mm thick laminate of Bank's approved colour . The front glass shall be fixed rigidly over the customer top with teakwood beadings on both sides finished with 2 coats of melamine polish. Two openings / slits shall be provided in the front glass - one opening of 300mmx150mm on the horizontal centre at the bottom of the glass and another 3" wide horizontal slit at the vertical centre of the front glass for convenient cash and voice transaction. The glass edges shall be bevelled on all exposed edges on both faces to ensure safe & smooth edges.				
2a	Branch In-charge Table (Size: 6'0"x2'6"x2'6"(H))	1.00	No.		
2b	Officer Table (Size: 5'0"x2'6"x2'6"(H))	2.00	No.		
2c	Staff Counters (Width of working top: 2'6"; Height: 2'6")	20.00	R. Ft.		



2d	Cash Counters (Width of working top: 3'0" & width of customer top: 1'6"; Heights as per description above)	10.00	R. Ft.		
3	STORAGE CABINETS / CREDENZAS				
	Providing & placing in position box type storage cabinets / Credenzas 18" deep & height as given below made out of 19mm approved board with 1mm laminate with shade as per bank's approved scheme. The top of the low height storages / credenzas shall be finished with 1.0mm thk Bank's approved colour. The sides, partition, top, shelves & bottom shall be made out of 19mm thk. approved board and back made out of 6mm thk. approved ply. Item shall have one 6" high drawers on top made out of 19mm thick approved ply / board complete with handles, locks etc of approved makes. The shutters made out of 19mm commercial ply wood finished with 1.0mm thk laminates of approved scheme on the outer surface shall cover the remaining space available below the drawers. All inner surface shall be finished with 0.8mm thick laminate with matching edge tapes for all exposed edges. A 100mm high top band shall be provided on top front face of the storage cabinets / credenzas finished with 1mm thk Bank's approved colour shade & 100mm high skirting finished with Bank's approved colour shall be provided as per approved make.				
	The drawer must be finished with 1.0mm thk laminate of shade as per Bank's scheme on outer surface and 0.8mm thick laminate on the inner surfaces. The drawers shall be supported with SS telescopic sliding channels of approved make with smooth push-pull mechanism along with SS handles and individual locks. The shutters below the drawer shall be supported with soft close clip-on SS Hinges of approved make of required number depending upon the size of the shutter. Each shutter shall be supplied with necessary accessories and hardware such as individual locks, SS handles, magnetic ball catchers, SS tower bolts, individual locks etc. of approved makes screwed and fixed rigidly. Horizontal shelves & vertical planks made out of 19mm thick commercial board shall be provided inside the shutters in such a manner to create optimum number of storage chambers each of equal storage space depending upon the size of the cabinets / credenzas. These partitions shall be finished with 1mm thick laminate on all faces and exposed side (thickness) edges of the partition members shall be finished with teakwood lipping and 2 coats of melamine polish. Note - For the purpose of contractors bill payment, only front elevation area shall be measured				
3a	Side credenza adjacent to the tables and counters (2'-6" High & 3'-0" Wide OR as mentioned in layout) Same as Sr. No.3 but with 1 no. 6" high drawers at top & shutters below drawer.	25.00	Sq. Ft.		
3b	Low Ht. Storage (2'-6" High) (FOR B.M. Cabin and select staff in branch hall only) Same as Sr. No.3 but with 1 no. 6" high drawers at top & shutters below drawer.	25.00	Sq. Ft.		
3c	Low Ht. Storage (4'-0" High) (FOR space behind staff counters in Branch Hall only) Same as Sr. No.3 but without drawers & with shutters fitted with SS butt hinges, vertical and horizontal shelves of appropriate size to utilize the entire space available as per layout for creating optimum space inside storage chambers at different heights	125.00	Sq. Ft.		
3c	Low Ht. Storage (8'-6" High) (FOR space behind staff counters in Branch Hall only) Same as Sr. No.3 but without drawers & with shutters fitted with SS butt hinges, vertical and horizontal shelves of appropriate size to utilize the entire space available as per layout for creating optimum space inside storage chambers at different heights	220.00	Sq. Ft.		
3d	MAIN ELECTRICAL PANEL CABINAET Full Ht. Baisoon Board Storage (8'-6" High) (FOR ELECTRICAL PANEL only) Same as Sr. No.2 but without drawers & with shutters having baisoon board on all inner surface fitted with SS butt hinges, vertical and horizontal shelves of appropriate size to utilize the entire space available as per layout for creating optimum space inside storage chambers at different heights	45.00	Sq. Ft.		
4	Aluminium Partitions & doors				
4a	AL. PARTITION:	0.00	SqFt		



	Providing & fixing Aluminium powder coated frame of sections 1.75" X 1.75" of 16 gauge (1.6mm) or higher thickness and 6 mm thk clear fixed glass. Item shall include all fixtures & fittings like neoprin rubber beading, springs etc complete. Item shall also include supply and installation of frosting film of aproved make with approved artwork. Film shall be of approved make, self-adhesive with bubblefree installation to be done on clean glass.				
	In case a ceiling type formation is to be prepared for enclosing the entrance vestibule of the branch / ATM from top due to avoid site nuisance of dust, pests etc where false ceiling is not carried out, the top of the partition vestibule shall be fabricated with aluminium frame as above and finished with approved make pre-laminated board panels of blue colour on the visible surface. <u>Note</u> - The additional ceiling partition item (if carried out) shall be measured on plan area and shall be added to the partition item quantity.				
4b	AL. DOOR Providing and fixing of Aluminum door with powder coated Aluminum sections of size 3.25"X 1.75" for door opening size of 2 x 2'-6" x 7'-0" in double panes (Branch entrance) & 1 x 2'-9" x 6'-6" (ATM Entrance) in single pane or as per drawing. Item shall include providing & fixing in position 6mm thk clear glass on door panes with bank's logo & frosting film of aproved make with approved artwork. Film shall be of approved make, self-adhesive with bubblefree installation. Item shall also include all the required hardware & fittings of approved makes such as heavy duty floor spring, D type matt finish SS handles of size 1'-3" of both sides of the door, 3 round dead lock arrangement, tower bolts of matching colour, self-adhesive push-pull indication stickers on both sides etc complete.	0.00	SqFt		
5	CUSTOMER WRITING DESK. Supply and fixing of free standing box type customer writing desk of required length, 42" height and 18" deep. The desk shall be made out of 19mm thick approved block / ply upto the height of 36" and glass bins above (open towards the front for keeping challans) of size 6" X 6" each made up of 10 mm thick plain glass on back & side partitions of the bins affixed firmly to the base and the writing top over the bins shall be made of 12mm thk clear glass, finished with smooth edges and sealed with silicon sealant. The bottom of the desk shall consist of 2 nos. box type cabinets of size - 12" (w) x 24" (h) x 18" (d) made out of 19mm thick approved ply with shutters with a viewing glass pane of appropriate size using 6-8mm plain glass and 20mm horizontal slit at the top of the shutter. The shutter shall be complete with all accessories like lock, SS handles, SS Hinges etc. All the exposed surfaces of the board shall be covered with 1mm thk laminate of approved shades and exposed edges to be finished with teakwood lipping and 2 coats of melamine polish. The exterior visible portion of the desk shall be finished with 1.0mm thick approved laminate on visible sides as per bank's colour scheme with matching top band skirting . All inner surfaces shall be finished with approved 0.8mm thk laminate in white shade. Item shall include all required hardware & accessories such as SS clamps, screws, slits etc to ensure that the rigid fixing of the desk members / parts and complete the item upto the satisfaction of the bank / Architect.	1.00	No.		
6	SOLID DOORS-IN LAMINATE FINISH (with hardware fittings MAKE EVERITE/GOLDEN /HARDWIN/EVEREST) (WITH OR WITH OUT VISION PANEL AS PER DIRECTION OF BANK / ARCHITECT 3'-0" x 7'-0" - IN LAMINATE FINISH - (WITH 2" x 3.5" finished size WOODEN FRAME) Providing and fixing solid doors of sizes as shown in the drawing. The door shutter shall of 35 mm thick flush shutter of approved make and finished with 1mm thick approved laminate on both sides. The edges finished with steam beach lipping. A door frame of 3.5" x 2" steam beach section shall be provided finished in mellamine. Rate shall include Dead lock (Godrej Make), floor springs / door closure (as the case may be), door stopper, a pair of handles 12" SS Brushed finished, 5" hinges 4 Nos., buffers, tower bolts, etc with necessary hardware items and with or with out door frames as mentioned above	0.00	Sq.Ft.		



7	ENTRANCE DOOR - IN TOUGHENED GLASS	50.00	Sq.Ft.		
	DOORS - WITH OZONE / HAFFLE / YALE / GODREJ MAKE FITTINGS				
	Providing and fixing frameless fully glazed 12mm thk toughened glass door fixed with necessary patch fittings(Dorma/Ozone/Haffle/Yale/Godrej make) including cutting, making holes, cutouts in the glass of required shape and size to accommodate fittings and fixing the fittings in floors, soffits, jams including necessary fixtures, screws, sealant wherever required and SS cover over patch fittings. Rate shall include necessary etching film / LOGO, approved patch fitting locking systems, 1 pair of 12" long S. S. (C Shape) Handles of approved make, floor springs, and any necessary hardware items.(ABOVE MENTIONED MAKES Top Pivot , Top Patch Fittings, Bottom Patch fittings , Floor Spring , Corner lock with strike plate and Euro Profile Cilinder, C Shape Handle 25mm dia X 300mm length)				
8	FULLY GLAZED PARTITION - WITH TOUGHENED GLASS	115.00	Sq.Ft.		
	USING OZONE / HAFFLE / YALE / GODREJ MAKE FITTINGS				
	Providing and fixing of Fixed Glass partition with 10mm thick toughened glass using Standard fittings of above - mentioned makes at the top and grouting at the bottom with U - Shaped Aluminium rails and EPDM gaskets including cutting, making holes in glass and fixing the fittings in floors, false ceiling etc. and making the same good with necessary screw, sealant wherever required. The top fittings to be fitted to the Wooden section fixed above the Gypsum board in the level of GI channels of False ceiling.				
9	LOGO BOARDS FOR COUNTER FRONT ELEVATION	0.00	Nos.		
	Supplying and fixing logo boards on the front elevation laminated surface of counters with 5mm thick acrylic sheet of size 18" x 18", attached with SS glass studs (1" or more). Stickers with bank logo (colour and shape as per Bank scheme) in the center to be pasted on the back side of the acrylic sheet neatly without any bubbles. The logo board must be placed on the centre of the front elevation of the counters visible to the customers EXCEPT on the Branch Manager's Table.				
10	GLASS BARRIER	105.00	Sq. Ft.		
	Providing and fixing glass barrier in the front of clerical / working counters made out of 10mm thick clear float glass with chamfered and polished edges. The glass must be supported at each end of the individual counters either with low ht. partitions or 3"x3" square towers of required height made with 19mm thick approved ply finished with 1mm thick laminate of approved shade on all faces as per the design approved by bank. In case of square towers, the top of the towers should be finished with 1mm thk approved laminate. The glass should be clamped rigidly to the low ht. partition / towers with teakwood beading finished with melamine polish along with necessary hardware / accessories as required. The height of the glass barrier shall be 450 mm (or as directed by the bank). The length of the glass barrier in single piece must be equal to the length of the individual counter. Item shall also include frosting film of aproved make with approved artwork. Film shall be of approved make, self-adhesive with bubblefree installation.				
	There shall be 2 uniform slits, each 75mm high; one at the bottom of the glass barrier just above the counter / Table top & one at the vertical centre of the glass barrier.				
11	PANELING				
11a	WALL / COLUMN PANELING (Full Ht. - till soffit of false ceiling) (IN ATM Room / Walls in Manager Cabin / Walls in Cash cabin / Independent pillars in branch hall / Side wall adjacent to Officer Table ONLY)	710.00	Sq. Ft.		



	<p>Providing and fixing in position wall panelling in 600 X 600 mm grid (horizontally and vertically) comprising of 25 mm X 50 mm heavy duty GI Box Sections (1.6 mm) with 8 mm thick ply finished with 1 mm thick laminate finish of approved shade and make. The soffits of the doors / windows shall also be covered with paneling as well. Item shall include 100mm high skirting on bottom of the finished floor in Bank's approved colour and a top band of 100mm high from the soffit/ceiling/visible top height of the paneling in Bank's colour scheme. Remaining area shall be finished with 1.0mm thk laminate of approved make.</p> <p>Note - No paneling shall be provided behind the storage / cabinets / tables sides or any other surface which is not visible (no payment for same shall be entertained by the bank). Entire paneling shall be provided only on visible surfaces as per approved layout or as directed by the Bank. Also, no paneling shall be provided on the columns embedded in walls. The paneling should be provided on independent pillars in the branch hall only that too till soffit of false ceiling.</p>				
	Note:- In case of wall not being true to plumb extra shims of aluminium section shall be provided. Nothing extra shall be payable in this regard.				
	<p>Note:</p> <p>a) In case of false ceiling, area of panelling payable will be below the false ceiling only.</p> <p>b) Measurement of height shall be taken from finished floor only, in case of varying heights on either side of panelling, average height shall be considered.</p> <p>c) Openings/ door/ glass shall not be measured for payment.</p>				
12	FALSE CEILING (Branch & ATM)	775.00	Sq. Ft.		
	<p>Providing and fixing ½" thk. Gypsum India board false ceiling at levels as shown in the drg. From FFL. Rate shall be inclusive of all Gypsum India components contained G.I. perimeter channels of size 0.55 thick having one flange of 20mm and another flange of 30mm and a web of 27mm alongwith perimeter of ceiling, screw fixed to brickwall/partition with the help of nylon sleeves and screws, at 610mm centres. The suspending G.I.intermediate channels of size 45mm, 0.9mm thick with two flanges of 15mm each from the soffit at 1220mm centres with ceiling angle of width 25mm x 10mm x 0.55 thick fixed to soffit with G.I. cleat and steel expansion fasteners at every 610mm c/c. Ceiling sections of 0.55mm thickness having knurled web of 51.5mm and two flanges of 26mm each with lips of 10.5mm are then fixed to intermediate channel with the help of connecting clip and in direction perpendicular to the intermediate channel at 457mm centres. 12.5mm tapered edge Gypboard is then screw fixed to ceiling section with 25mm drywall screws driver or drilling machine with suitable attachment. The boards are to be jointed and finished so as to have a flush look which includes filling and finishing the tapered and square edge of the boards with jointing compound & joint paper tape. Rate shall be inclusive of Cut outs for A/c machines, spot lights, light fixtures, A/C. Grills, fire and security systems cut outs, All Sections should adhere to the manufacturers guidelines. Vertical sides visible will be measured.</p>				
13	MODULAR FALSE CEILING - ARMSTRONG / equivalent make	945.00	Sq. Ft.		
	<p>Providing and fixing Armstrong (Fine Fissured Micro Look with Tagular Edge using 15mm Grid sections) false ceiling of size 24"x24" at levels as shown in the drwng. from FFL. Rate shall be inclusive of providing the total system with installation etc.. The contractor has to maintain all tiles in good order and replace the defected tiles (at his own cost) before handing over the site for Branch Operations (till Inauguration).</p>				
14	GLASS SHELVES	30.00	Sq. Ft.		
	<p>Providing and fixing glass panes / shelves of required sizes with all edges neatly grinded, polished and fixed to the wall surfaces using SS D-brackets. The glass shall be 10mm thk plain glass of approved make. Item shall include all required arrangement / hardwares/ accessories to complete the job upto the satisfaction of bank / Architect.</p> <p>Note - For the purpose of contractor's payment, front elevation area shall be measured.</p>				



15	CHEQUE DROP / SUGGESTION BOX (with glass front)	2.00	Nos.		
	Supplying and fixing wall mounted Cheque Drop Box of outer size 10" (D) X 12" (W) X 20" (H) with front openable partly glazed shutter, lock, slot for dropping cheques from top along with all required hardwares & accessories like SS handle, SS butt hinges etc to complete the job upto the satisfaction of the bank / Architect. The box shall be made out of 12mm thk approved plywood finished with 1mm thk approved laminate on outer faces & 0.8mm thk laminate on all inner faces. The front door shall have 6mm thk glass of size 6"x12" fixed with beach wood beeding. All exposed edges of Plywood shall be fixed with teakwood lipping of appropriate thickness enough to cover the entire exposed edges with 2 coats melamine polish. The box shall be complete with all accessories like SS hinges, SS Handles, Locks etc of approved makes.				
16	NOTICE / PIN-UP BOARD	1.00	Nos.		
	Providing & fixing Notice Board made of tag board of approved make & design of size 4'-0" X 3'-0" with powder coated aluminum border / frame. The board should be 3/4" thk straw board with velvet type fabric covering of Bank's approved colour .				
17	ACP WALL PANELLING (For outside front walls and outer pillars of ATM only)	310.00	Sq. Ft.		
	Providing & fixing in position ACP (Aluminium Composite Panel) wall panelling having minimum ACP thickness of 3mm and minimum foil thickness of 0.25 mm on both sides with Aluminium framing tube sections of min 1.5" X 1" (20 gauge or down) @ 2'-0" C/C both ways. Panels shall be neatly fixed to the frame with 3M or equivalent adhesive and joints shall be finished with silicon based sealant. ACP shall be of approved make and in Ivory & Bank's approved colour as per bank's approval. Item shall include proving & fixing additional sections as required for fixing Indoor AC units, proper access panel for ATM power point, proper locking arrangement for plug point by providing additional framing etc complete. Note - For the purpose of payment, the measurements shall be taken up to the visible height / false ceiling level only.				
18	BOXING FOR ROLLING SHUTTER	150.00	Sq. Ft.		
	Providing and fixing rolling shutter panelling / enclosure of required size as per description at Sr. No.9. The rate shall inclusive of necessary hardware fittings like hinges, screws, tower bolts sealant, trap door, locking arrangement etc complete.				
19	ALUMINIUM GRILL FOR BULK CASH COUNTER TOP	95.00	Sq. Ft.		
	Providing & fixing 7.5mm thick 48mm X 48mm opening size, white colour powder coated aluminium grill at the top of the cash cabin fixed with 8mm thick teakwood beadings of necessary width. All the exposed wood / beadings shall be neatly finished with 2 coats of melamine polish. All the accessories used shall be concealed type.				
20	DISMENTALING WORK	1.00	Job		
	Removing/dismantaling the existing furniture, table partitions panelling, doors etc. and dispose the derbis from the site to municipal ground. The rate shall include the transport charge. Providing Temporary arrangements for functioning of Branch throughout the course of completion of renovation work including temporary shifting of workstations, counters, storages, tables, chairs etc. to enable smooth functioning of the branch during renovation all complete as per the instructions of Architect/ Bank's Engineer. NOTE: None of the old furniture items must be used for providing the temporary setup for functioning of the branch during the course of renovation				
21	PAINTING PLASTIC PAINT	3,200.00	Sq.Ft.		



	Applying 2 Coat putty with primer and Providing and applying Plastic emulsion paint (asian) of approved make and shade on walls including scrapping off, preparing the base & applying 3 or more coats of approved make, color and shade to give an even and smooth surface on new work including necessary scaffolding, coat of cement primer etc. all complete as per direction of Bank. (only banking hall.)				
22	ENAMEL PAINT:- Providing & applying Enamel Paints to Rolling Shutters, Collapsible Gate, Doors, Windows, Grills, Metallic Surfaces, etc. Removing, scrapping & cleaning the existing enamel paint on doors, windows, grills, metallic surfaces, etc. paint by scrapping, sand papering and scrubbing. (The grills, metallic surfaces, etc. shall be finished with after scrapping, applying red oxide & finish with minimum 2 coats of enamel paint as per instruction of bank or engineer-in-charge).	350.00	Sq.Ft.		
GRAND TOTAL (Excl. GST) (Rs.)					



OPTION-01



GENERAL NOTES:-

- THIS DRAWING IS THE PROPERTY OF ARCH DESIGN ARCHITECTS AND IS NOT TO BE USED FOR ANY PURPOSE OTHER THAN FOR WHICH IT IS ISSUED WITH OUT PERMISSION OF ITS PRINCIPALS.
- THIS DRAWING IS TO BE READ IN CONJUNCTION WITH OTHER RELEVANT ARCHITECTURAL, STRUCTURAL AND OTHER DRAWINGS. THE DRAWING SHALL BE THE FABRICATOR TO BRING IN TO NOTIFICATION OF ANY DISCREPANCY WITHIN OR BETWEEN THE DRAWINGS PRIOR TO CONSTRUCTION.
- ALL WRITTEN DIMENSIONS ARE TO BE FOLLOWED AND THE DRAWING IS NOT TO BE SCALED.
- NOTE: ALL DIMENSION ARE IN FEET UNTIL MENTION IN DWG

PROJECT:-

PROPOSED INTERIOR LAYOUT
PLAN FOR INDIAN BANK
FIROZABAD BRANCH,
AT FIROZABAD, U.P.

DRAWING TITLE:-

INTERIOR LAYOUT PLAN FOR
BASEMENT FLOOR AND
GROUND FLOOR

SCALE:-

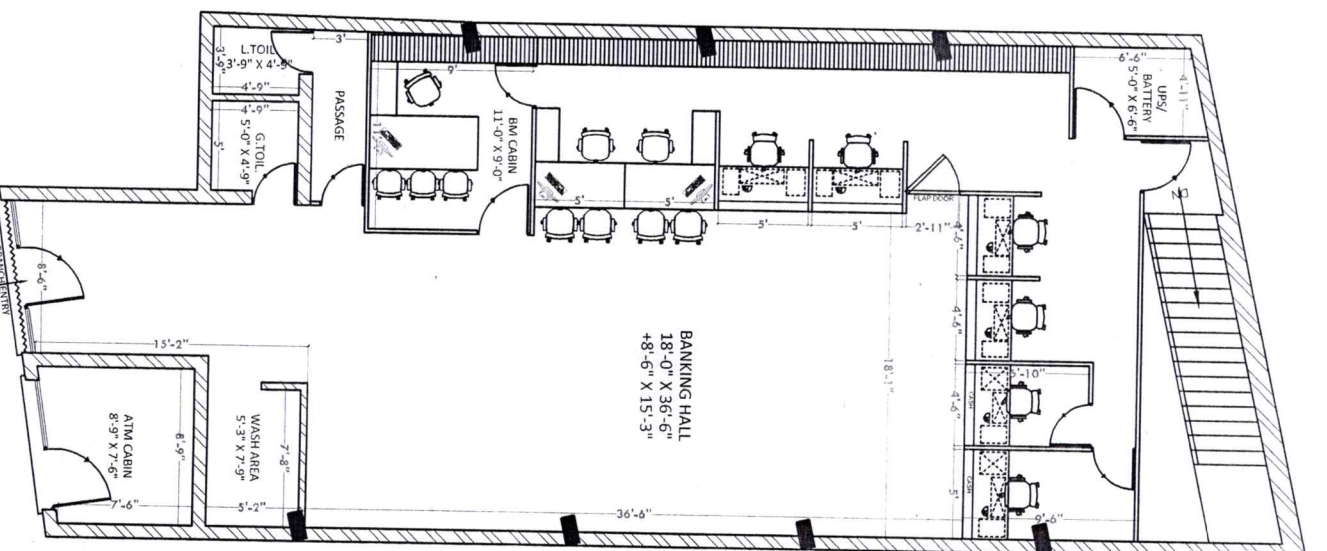
N.T.S.

DWG. NO.:-

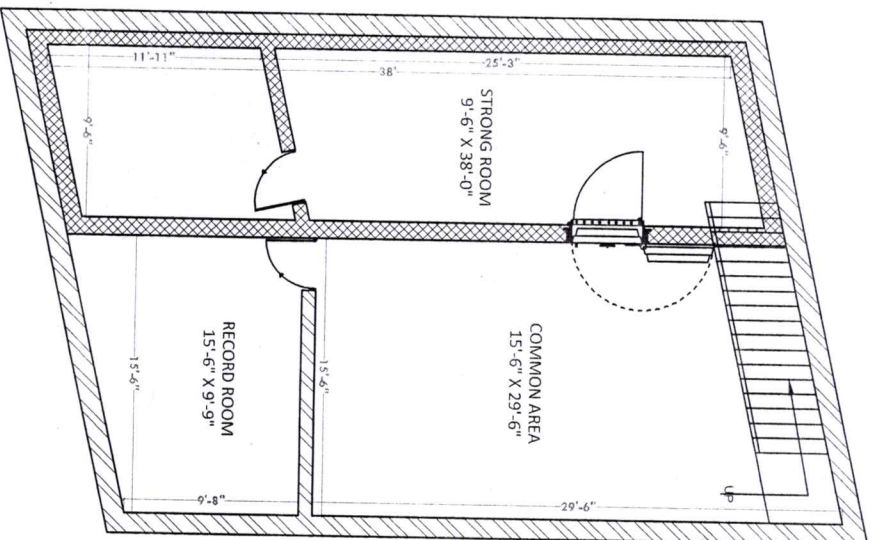
ADA-1B-FB-01

DATE:-

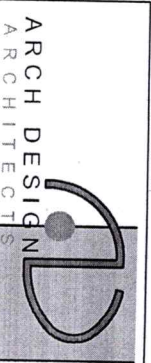
10.01.2024



GROUND FLOOR PLAN

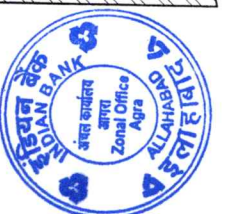


BASEMENT FLOOR PLAN



ARCH DESIGN
ARCHITECTS
ARCHITECTS, INTERIOR DESIGNER, PROJECT MANAGEMENT
H.O. - C-32, WARDHANA PARK, NEW DELHI-110028, GURGAON, HARYANA
CIVIL LINES, BUILDING NO-20/01/1008, 889927440, 9417857600.
Email - archdes12@gmail.com

OPTION- 01



GENERAL NOTES:-

- THIS DRAWING IS THE PROPERTY OF ARCH DESIGN ARCHITECTS AND IS NOT TO BE USED FOR ANY PURPOSE OTHER THAN FOR WHICH IT IS ISSUED WITH OUT PERMISSION OF ITS PRINCIPALS.
- THIS DRAWING IS TO BE READ IN CONJUNCTION WITH OTHER RELEVANT ARCHITECTURAL, STRUCTURAL AND OTHER DRAWINGS. ANY DISCREPANCY IN THE DRAWINGS SHALL BE THE RESPONSIBILITY OF THE ARCHITECTS PRIOR TO CONSTRUCTION.
- ALL WRITTEN DIMENSIONS ARE TO BE FOLLOWED AND THE DRAWING IS NOT TO BE SCALED.
- NOTE: ALL DIMENSION ARE IN FEET UNTIL MENTION IN DWG

PROJECT:-

INTERIOR LAYOUT
PLAN FOR INDIAN BANK
FIROZABAD BRANCH,
AT FIROZABAD, U.P.

DRAWING TITLE:-

RCP LAYOUT PLAN FOR
BASEMENT FLOOR AND
GROUND FLOOR

SCALE:-

DWG. NO:-

N.T.S.

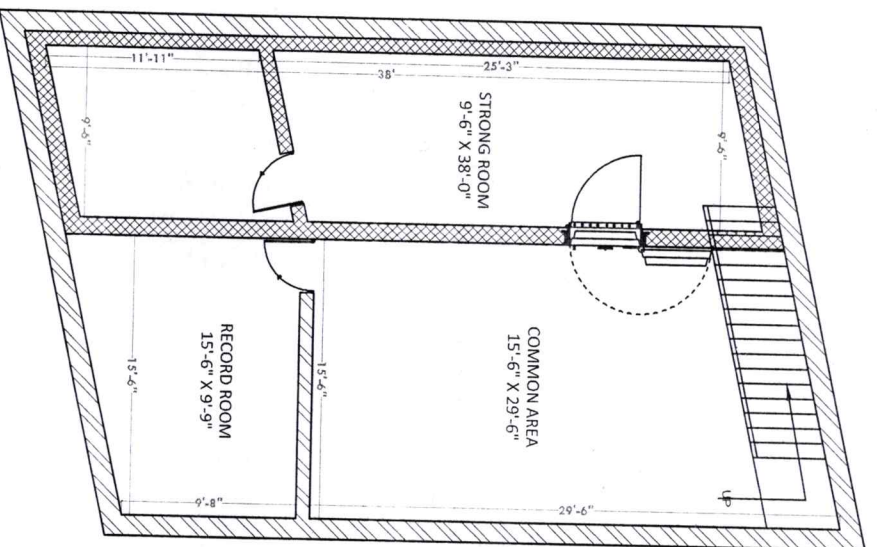
DATE:-

ADA-1B-FB-01

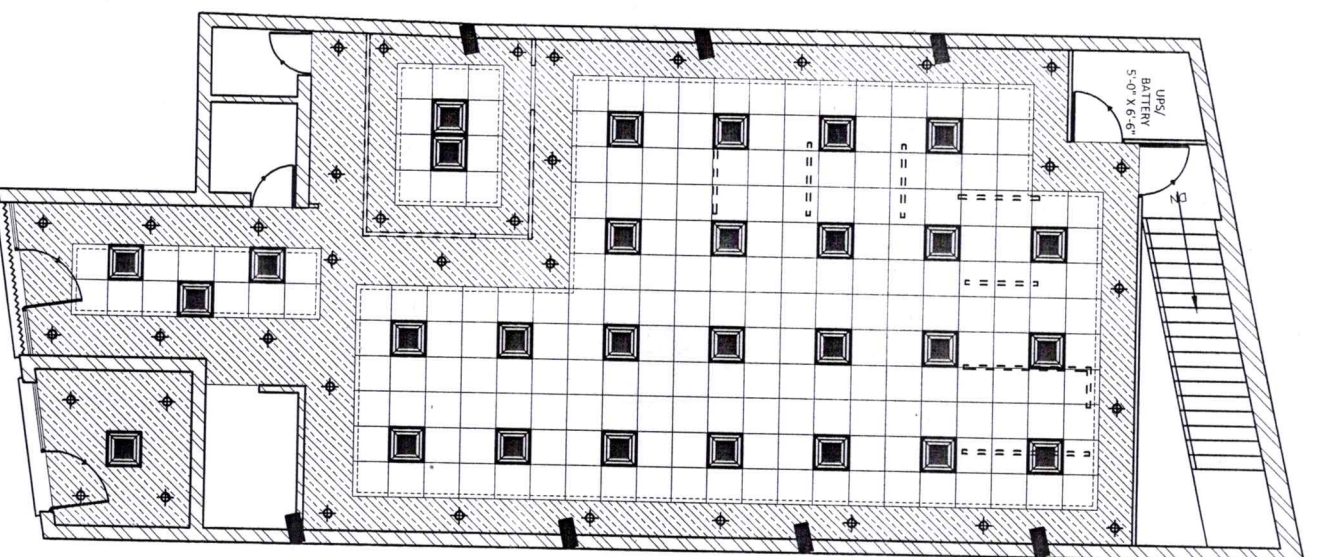
19.02.2024



BASEMENT FLOOR PLAN



GROUND FLOOR PLAN



ARCH DESIGN
ARCHITECTS

ARCHITECTS, INTERIOR DESIGNER, PROJECT MANAGEMENT
H.O. :- C-32, MASARODER PARK, NEW DELHI-110028, INDIA
GWL LINES: BULANDSHAHAR-203001MOB: 9899227440, 9417857000.
Email :- archides12@gmail.com