



**PREMISES DEPARTMENT  
ZONAL OFFICE MUMBAI SOUTH**

**TENDER DOCUMENT  
ELECTRICAL WORK IN EXISTING PREMISES OF  
INDIAN BANK – MUMBAI FORT BRANCH**

**Ref:No** : ZO MUM(S) : PRM : 2025-26 : 12  
**Date** : 04/10/2025

|                                        |                                                                                                                                         |
|----------------------------------------|-----------------------------------------------------------------------------------------------------------------------------------------|
| <b>Last date for submission of Bid</b> | 31/10/2025 upto 16:00 HRS at Indian Bank, Zonal Office, Premises Department, 2nd Floor, 37, Mumbai Samachar Marg, Fort, Mumbai – 400001 |
| <b>Date of Opening of Bid</b>          | 31/10/2025 upto 17:00 HRS at Indian Bank, Zonal Office, Premises Department, 2nd Floor, 37, Mumbai Samachar Marg, Fort, Mumbai – 400001 |

**ARCHITECT**  
**SANKALPA ASSOCIATES**  
**ARCHITECTS & INTERIOR DESIGNERS**  
1001, Eleven Heights, Sant Gora Kumbhar Marg, Kumbharwada, Dharavi, Mumbai 400017

## INDEX

| <u>DESCRIPTION</u>              | <u>PAGE NOS.</u> |
|---------------------------------|------------------|
| NOTICE INVITING TENDER          | 3 - 5            |
| FORM OF TENDER                  | 6                |
| GENERAL INFORMATION OF THE FIRM | 7 - 11           |
| GENERAL TERMS AND CONDITIONS    | 12 – 18          |
| ARTICLES OF AGREEMENT           | 19 – 21          |
| APPROVED LIST OF MATERIALS      | 22 - 23          |
| BILL OF QUANITIES               | 24 - 30          |
| DRAWINGS                        | 31 - 32          |



## ZONAL OFFICE – MUMBAI SOUTH

### NOTICE INVITING TENDER

Indian Bank, Zonal Office Mumbai South invites sealed bids under Single Bid System from reputed and established Electrical Contractors empanelled with Indian Bank, complying minimum qualification criteria as per Tender specifications and having full time local office at Mumbai / Mumbai Suburban / Thane Districts for “**Tender for Electrical Works in Existing Premises of Indian Bank – Mumbai Fort Branch, Mumbai**”. The Tender Documents can be downloaded from the Bank’s website ([www.indianbank.in](http://www.indianbank.in)) under Tender Column.

|    |                                         |                                                                                                                                                                                                                                                                                                                                                                                                                                                                                                                                                                                                                                                                     |
|----|-----------------------------------------|---------------------------------------------------------------------------------------------------------------------------------------------------------------------------------------------------------------------------------------------------------------------------------------------------------------------------------------------------------------------------------------------------------------------------------------------------------------------------------------------------------------------------------------------------------------------------------------------------------------------------------------------------------------------|
| 1  | Name of work                            | <b>Electrical Works in Existing Premises of Indian Bank – Mumbai Fort Branch, Mumbai</b>                                                                                                                                                                                                                                                                                                                                                                                                                                                                                                                                                                            |
| 2  | Estimated cost of work                  | Rs.11.57 Lakhs                                                                                                                                                                                                                                                                                                                                                                                                                                                                                                                                                                                                                                                      |
| 3  | Period of completion                    | 60 days to be reckoned from 7 <sup>th</sup> day from the date of issue of the Work Order or handing over of site whichever is later                                                                                                                                                                                                                                                                                                                                                                                                                                                                                                                                 |
| 4  | Validity of Tender                      | 120 Days from the date of opening                                                                                                                                                                                                                                                                                                                                                                                                                                                                                                                                                                                                                                   |
| 5  | Defects Liability Period                | 12 Months from the date of virtual completion of work                                                                                                                                                                                                                                                                                                                                                                                                                                                                                                                                                                                                               |
| 6  | Earnest Money Deposit                   | Rs.23,000/- (Rupees Twenty Three Thousand Only) by way of DD in favour of Indian Bank payable at Mumbai<br><b>*Firms registered with MSE / UDYAM / NSIC with valid certificates issued by GOI are exempted from submitting EMD along with bid.</b>                                                                                                                                                                                                                                                                                                                                                                                                                  |
| 7  | Initial Security Deposit (ISD)          | <b>After acceptance of Work Order, Contractor shall submit ISD of 2% of the Bid / Contract Amount in the form of DD in the name of “Indian Bank” payable at Mumbai within 7 days from the date of allotment of work.</b>                                                                                                                                                                                                                                                                                                                                                                                                                                            |
| 8  | Retention Money (RM)                    | <b>8% of the Bill Amount (RA Bill / Final Bill) excluding Taxes</b>                                                                                                                                                                                                                                                                                                                                                                                                                                                                                                                                                                                                 |
| 9  | Total Security Deposit (TSD) = ISD + RM | 10% of the Bid Amount (ISD – 2% & RM – 8%)                                                                                                                                                                                                                                                                                                                                                                                                                                                                                                                                                                                                                          |
| 10 | Release of Retention Money              | 50% of Total security deposit will be returned on completion of following: <ul style="list-style-type: none"> <li>• After 30 days of the payment of the final bill.</li> <li>AND</li> <li>• Taking over certificate by Bank</li> <li>AND</li> <li>• Tenderer’s removal of his materials, equipment, labour force, temporary sheds/stores etc. from the site. (except for a small presence required if any for the Defect Liability Period and approved by the Indian Bank.</li> </ul> <b>Balance 50%</b> of retention money shall be released within 30 days after satisfactory completion of defect liability period and defects free as per the contract clauses. |
| 11 | Interim / Adhoc Payment                 | Minimum value of work for Interim Payment is Rs.5 Lakhs or as decided by Bank. Only one interim bill is allowed during the entire course of the work. However, Bank is not bound to make the payment against the interim bill raised by Contractor.                                                                                                                                                                                                                                                                                                                                                                                                                 |
| 12 | Liquidated Damages                      | <b>1%</b> per week of the Contract Value subject to maximum total of <b>10%</b> of final Contract value                                                                                                                                                                                                                                                                                                                                                                                                                                                                                                                                                             |

|    |                                      |                                                                                                                                                                                                                                                                                                                                                                                                                                                                                                                                                                                                                                                                                                                                                                                                                                                                                                                                                                                                                                                                                                                                                                                                                                                                                                                                                                                                                                                                                                                                                                                                                                                                                                                                                                     |
|----|--------------------------------------|---------------------------------------------------------------------------------------------------------------------------------------------------------------------------------------------------------------------------------------------------------------------------------------------------------------------------------------------------------------------------------------------------------------------------------------------------------------------------------------------------------------------------------------------------------------------------------------------------------------------------------------------------------------------------------------------------------------------------------------------------------------------------------------------------------------------------------------------------------------------------------------------------------------------------------------------------------------------------------------------------------------------------------------------------------------------------------------------------------------------------------------------------------------------------------------------------------------------------------------------------------------------------------------------------------------------------------------------------------------------------------------------------------------------------------------------------------------------------------------------------------------------------------------------------------------------------------------------------------------------------------------------------------------------------------------------------------------------------------------------------------------------|
| 13 | Tender Documents                     | Tender documents can be obtained from the Bank's website ( <a href="http://www.indianbank.bank.in">www.indianbank.bank.in</a> ) under Tenders column.                                                                                                                                                                                                                                                                                                                                                                                                                                                                                                                                                                                                                                                                                                                                                                                                                                                                                                                                                                                                                                                                                                                                                                                                                                                                                                                                                                                                                                                                                                                                                                                                               |
| 14 | Last date for the submission of Bids | 31/10/2025 upto 16:00 HRS at Indian Bank, Zonal Office, Premises Department, 2nd Floor, 37, Mumbai Samachar Marg, Fort, Mumbai – 400001                                                                                                                                                                                                                                                                                                                                                                                                                                                                                                                                                                                                                                                                                                                                                                                                                                                                                                                                                                                                                                                                                                                                                                                                                                                                                                                                                                                                                                                                                                                                                                                                                             |
| 15 | Date of opening of Bid               | 31/10/2025 upto 17:00 HRS at Indian Bank, Zonal Office, Premises Department, 2nd Floor, 37, Mumbai Samachar Marg, Fort, Mumbai – 400001                                                                                                                                                                                                                                                                                                                                                                                                                                                                                                                                                                                                                                                                                                                                                                                                                                                                                                                                                                                                                                                                                                                                                                                                                                                                                                                                                                                                                                                                                                                                                                                                                             |
| 16 | Minimum Eligibility Criteria         | <p>1. Should be empanelled in Indian Bank<br/><i>Kindly enclose valid Empanelment Letters.</i></p> <p>2. The Contractor/Vendor should be in same line of activity for at least last 7 Years in the Market ending on 30.09.2025.</p> <p><i>Please furnish Purchase Order / Work Order / Client's Completion Certificate / Empanelment Letter issued by PSBs / PSUs / Central Government / State Government to confirm the same.</i></p> <p>3. Should have Registered Office in Mumbai / Mumbai Suburban / Thane District<br/><i>Please furnish requisite document as proof.</i></p> <p>4. Should have carried out similar work of value in the last 3 years (ending 30.09.2025). At least :</p> <ul style="list-style-type: none"> <li>• Atleast one similar works of value not less than Rs.9.28 Lakhs each</li> <li style="text-align: center;">(OR)</li> <li>• Atleast two similar works of value not less than Rs.5.80 Lakhs each</li> </ul> <p><i>Copies of TDS Certificate, Work Order / Completion Certificate showing value of work satisfying the above eligibility criteria along with copy of generated tax invoice are to be enclosed.</i></p> <p>Similar works means: Electrical Wiring Works, LAN Cabling Works and Supply and Fixing of Electrical Fixtures</p> <p>5. Should have valid GST No. &amp; PAN No</p> <p>6. Should be a registered electrical license holder (Minimum Grade – B) issued by the Competent Government Authority</p> <p><b><i>The bidders must satisfy the above criteria and furnish the relevant documents as proof. If the Vendors fails to provide relevant documents and meet the minimum eligibility criteria as mentioned above, Bank would disqualify the bidder without assigning any reason whatsoever.</i></b></p> |



**Note:**

1. Tenderers are required to submit the bid in sealed cover along with, necessary documents prescribed in the Bids, Forms and EMD. The sealed bid should be super-scribed as **“Tender for Electrical Works in Existing Premises of Indian Bank – Mumbai Fort Branch, Mumbai”** and addressed to the Zonal Manager, Indian Bank, Zonal Office, Premises Department, 2<sup>nd</sup> Floor, 37, Mumbai Samachar Marg, Fort, Mumbai - 400001
2. Conditional tenders, late tenders, tenders without EMD or EMD not enclosed with Bids, will be summarily rejected. Any tender received open, late or not meeting all the tender conditions / Bids not filled up in Pen are liable to be rejected.
3. Earnest money will not carry any interest.
4. If any information furnished by the applicant is found incorrect at a later stage, he shall be liable to be debarred from taking up the work in Indian Bank.
5. The Bank reserves the right to verify the particulars furnished by the applicant independently.
6. Bank is not bound to accept the Lowest (L1) bidder and reserves the right to accept or reject any or all the tenders without assigning any reason whatsoever.
7. Submission of this tender document by a bidder implies that he/she has read this notice and other contract / documents and has made himself aware of the scope, specifications, conditions, liabilities and duties bearing on the execution of the contract.
8. Return of EMD of remaining bidders who were unsuccessful in the bidding process will be done within a reasonable time say not exceeding 14 days from the date of acceptance of tender submitted by the L1 bidder.
9. Each and every page of the tender documents and correspondences accompanying the tender shall have to be duly signed and stamped by the Bidder / Authorised Signatory before submission.
10. The rates quoted by the bidder shall be based only on the specifications and conditions of the tender documents.
11. Bank is not liable to make any payment to bidders for preparation to submit the bid.
12. Clarifications, if any, pertaining to this bids may be referred to Indian Bank, Premises Department, Zonal Office Mumbai South through E-mail Id – [zo.mumbai.expprem@indianbank.co.in](mailto:zo.mumbai.expprem@indianbank.co.in)

**ZONAL MANAGER**



## FORM OF TENDER

The Zonal Manager  
Indian Bank  
Zonal Office Mumbai South

Dear Sir,

**SUB: Invitation of Tender for Electrical Work in Existing Premises of  
Indian Bank – Mumbai Fort Branch**

Having examined the drawings, specifications, conditions and schedule of quantities prepared by you, and satisfying ourselves as to the location of the site and working conditions, I/We hereby offer to execute the above works at the respective rates which I/We have quoted for the items in the Schedule of Quantities.

I/We further agree to complete the work within the stipulated time as specified in the Tender Document.

I / We understand that Indian Bank is not bound to accept the lowest tender or bound to assign any reasons for rejecting our bid.

In the event of this bid being accepted, I/We agree to enter into and execute the necessary contract required by you. I/We do hereby bind myself/ourselves to forfeit the aforesaid Earnest Money Deposit of **Rs.23,000/- (Rupees Twenty Three Thousand only)** in the event of our refusal or delay in signing the Contract Agreement.

I / We understand that Indian Bank may award the work to more than one Contractor and I / We shall make no claims whatsoever if Indian Bank accept only a part of my / our tender.

I / We unconditionally agree to Indian Bank's conditions as stipulated in the Documents.

I/We agree to keep our bid open for **120 (One Hundred Twenty) days** from the date of opening of Tender.

I / We agree that in case of my / our failure to execute the work in accordance with the specifications and instructions received from the Bank during the course of the work, Bank reserves the right to terminate my work order and recover all the dues to the Bank from the payment receivable by me. Further, I may also be barred from participating in any type of bid invited by Bank or its subsidiaries in future.

Thanking you,

Yours faithfully,

[To be signed by the Authorized Representative of  
Firm who has the Power to do so]

Place:

Date :

Name:

Address:

Seal:

### GENERAL INFORMATION OF THE FIRM

|    |                                                                                                                                                                                                                                                                                                                             |                                                                                            |
|----|-----------------------------------------------------------------------------------------------------------------------------------------------------------------------------------------------------------------------------------------------------------------------------------------------------------------------------|--------------------------------------------------------------------------------------------|
| 1  | Name of the Applicant / Firm / Organization                                                                                                                                                                                                                                                                                 |                                                                                            |
| 2  | Registered Address of the Firm                                                                                                                                                                                                                                                                                              |                                                                                            |
| 3  | <b>CONTACT DETAILS</b><br><br>Landline No - .....<br><br>Mobile No - .....<br><br>Email Id - .....                                                                                                                                                                                                                          |                                                                                            |
| 4  | <b>EMD Details</b><br>(i) Amount (Rs.) - .....<br>(ii) Demand Draft No. - .....<br>(iii) Name of the Bank - .....<br>(iv) Date – .....<br><br><i>(Please submit EMD Details. If exempted, please submit requisite proof in the form of copy of self-attested valid certification from MSE, UDYAM and NSIC Certificate.)</i> |                                                                                            |
| 5  | Constitution of Firm                                                                                                                                                                                                                                                                                                        | Sole Proprietorship / Partnership / Private Ltd. / Public Ltd / Any other (Please specify) |
| 6  | Name of the Proprietor/ Partners / Directors of the Organization / Firm                                                                                                                                                                                                                                                     |                                                                                            |
| 7  | Name/s of Authorized Signatory/ Directors / Partners                                                                                                                                                                                                                                                                        |                                                                                            |
| 8  | Whether registered as MSME Organization?                                                                                                                                                                                                                                                                                    | YES / NO                                                                                   |
| 9  | Whether empanelled with Indian Bank<br><i>(Enclose Empanelment letter)</i>                                                                                                                                                                                                                                                  | YES / NO                                                                                   |
| 10 | Banker's Details –<br><i>(Please attach copy of cancelled cheque as proof)</i>                                                                                                                                                                                                                                              |                                                                                            |

|    |                                                                                                                                                                                                                                                                            |                                                                                               |
|----|----------------------------------------------------------------------------------------------------------------------------------------------------------------------------------------------------------------------------------------------------------------------------|-----------------------------------------------------------------------------------------------|
|    | (i) Banker's Name :<br>(ii) Account No. :<br>(iii) Type of Account :<br>(iv) IFSC :                                                                                                                                                                                        | .....<br>.....<br>.....<br>.....                                                              |
| 11 | Registration with the Government Authorities<br><b>(Enclose certified copies of documents as evidence)</b><br>If firm is exempt from ESI & EPF registration as per extant guidelines, fill N.A. and an undertaking is to be submitted stating the same.                    |                                                                                               |
|    | a) Income Tax (PAN) No.<br>ii) Goods & Service Tax (GST) No.<br>iii) Labour License<br>iv) ESI<br>v) EPF                                                                                                                                                                   | .....<br>.....<br>.....<br>.....<br>.....                                                     |
| 12 | Whether last three years IT returns filed<br>FY 2022-23 (AY 2023-24)<br>FY 2023-24 (AY 2024-25)<br>FY 2024-25 (AY 2025-26)<br><br><b>(Enclose certified copies of IT Return – As evidence)</b>                                                                             | YES / NO                                                                                      |
| 13 | Yearly turnover of the Organization during last 3 years (Year Wise) and furnish audited Balance Sheet Statement and Profit & Loss A/c. (Audited) for the last 3 years.<br><b>(Enclose certified copies of documents as evidence)</b>                                       | 2022 - 23 : Rs.....<br>2023 - 24 : Rs.....<br>2024 – 25 : Rs.....<br><b>Average : Rs.....</b> |
| 14 | Information relating to whether any litigation is pending before any Arbitrator for adjudication of any litigation or else any litigation was disposed of during the last five years by an arbitrator. If so, the details of such litigation are required to be submitted. |                                                                                               |



|    |                                                                                                                                                                                                         |  |
|----|---------------------------------------------------------------------------------------------------------------------------------------------------------------------------------------------------------|--|
| 15 | Has the applicant or any constituent partner in case of partnership firm/ Company, ever abandoned the awarded work before its completion? If so, give the name of the project and give reasons thereof. |  |
| 16 | Has the applicant or any constituent partner in case of partnership firm / Company, ever been debarred/black listed for tendering in any organization at any time? If so, give details                  |  |

**DECLARATION –**

1. All the information furnished by me/us here above is correct to the best of my knowledge and belief.
2. I/We have no objection if enquiries are made about the work listed by me/ us in the accompanying sheets/ annexures.
3. I/We agree that the decision of Indian Bank in selection of tenderers will be final and binding to me/ us.
4. I/We hereby confirm that our firm/agency/company has not been disqualified / debarred / blacklisted by any Governments, Semi-governments, PSUs, Banks including any of the Offices / Branch of Indian Bank Pan India during last 5 year from the date of application.
5. I/We hereby confirm that all information, particulars, copies of certificates and testimonials in connection with my/our empanelment are correct and genuine. I am / We are, therefore, liable to face appropriate actions as deemed fit by the Indian Bank in the event of any of the information, particulars, copies of certificates and testimonials are not found correct and genuine. I/We have read the instructions appended to the proforma and I/we understand that if any false information is detected at a later date, the empanelment shall be cancelled at the discretion of the Indian Bank.

PLACE –

DATE –

SIGNATURE OF CONTRACTOR

NAME & DESIGNATION –

SEAL OF ORGANISATION -

**FORM - A**

**LIST OF MAJOR WORKS COMPLETED IN LAST 7 YEARS**

| S.NO | NAME OF CLIENT | NATURE OF WORK | ESTIMATED VALUE | DATE OF START | PERIOD OF COMPLETION | DATE OF COMPLETION | FINAL VALUE OF THE PROJECT | REASONS FOR THE VARIATION (IF ANY) |
|------|----------------|----------------|-----------------|---------------|----------------------|--------------------|----------------------------|------------------------------------|
| (1)  | (2)            | (3)            | (4)             | (5)           | (6)                  | (7)                | (8)                        | (9)                                |
|      |                |                |                 |               |                      |                    |                            |                                    |

**(Add Separate Sheet if required)**

**NOTE –**

**The supporting documents like Work Order , Completion Certificate issued by the Clients & copy of invoice accepted by Client shall be enclosed.**

Name of Authorized Signatory

Sign & seal of the applicant

**LIST OF MAJOR WORKS UNDER EXECUTION**

| S.NO | NAME OF CLIENT | NATURE OF WORK | ESTIMATED VALUE | PRESENT POSITION | SCHEDULE DATE OF COMPLETION | REMARKS IF ANY |
|------|----------------|----------------|-----------------|------------------|-----------------------------|----------------|
| (1)  | (2)            | (3)            | (4)             | (5)              | (6)                         | (7)            |
|      |                |                |                 |                  |                             |                |

(Add Separate Sheet if required)

**NOTE –**

1. The supporting documents like Work Order issued by the Clients shall be enclosed.

Name of Authorized Signatory

Sign & seal of the applicant

## **GENERAL TERMS AND CONDITIONS**

### **1. Definition of Terms / Interpretation:**

- Employer/Owner/Bank /Indian Bank/ Accepting Authority shall mean Indian Bank with their Corporate Office at No. 254-260, Avvai Shanmugam Salai, Royapettah, Chennai – 600 014 inter-alia having their Zonal Office at 2<sup>ND</sup> Floor, 37, Mumbai Samachar Marg, Fort, Mumbai – 400001 and any of its employees representative authorized on their behalf.
- Throughout these bidding documents, the terms “bid” and “tender” and their derivatives (“bidder”/“tenderer”), “biddered /tendered”, “bidding”/“tendering”, etc. are Synonymous.
- Day means calendar day. Singular also means plural
- “Contractor” means the person whose Tender has been accepted by the Employer and the legal successors in title to such person, but not (except with the consent of the Employer) any assignee of such person.
- Tenderer: The term ‘Tenderer’ shall mean the individual or firm or company whether incorporated or not, undertaking the work and shall include legal representative(s) of such individuals or persons composing such firm or company or successors of such firm or company as the case may be and permitted assigns of such individual or firm or company.

### **2. Submission of Tender**

The Tender must be submitted in Original or as per details given here under. The rates shall be filled in the Price Bid given in the Tender Document

The Technical bid is to be submitted in sealed cover along with, Necessary documents prescribed in the Bids, Forms and EMD. The bid should be super-scribed ‘Tender for Electrical Works in existing premises of Indian Bank – Mumbai Fort Branch’ and addressed to the Zonal Manager, Indian Bank, Zonal Office, Premises Department, 2<sup>ND</sup> Floor, 37, Mumbai Samachar Marg, Fort, Mumbai – 400001

### **3. Qualifying Criteria**

As given in NIT of this Tender Document  
Additional Information –

Even though the tenderers meet the above qualifying criteria, they are liable to be disqualified if they have :

- Made misleading or false representation in the forms, statements and attachments in proof of the qualification requirements;
- Records of poor performance such as abandoning the work, not properly completing the contract, inordinate delays in completion, penalty, litigation history or financial failures etc.
- Their business banned by any Central or State Govt. Department / Public Sector Undertakings / Public Sector Bank’s
- Not submitted all the supporting documents or not furnished the relevant details as per the prescribed format.
- Any one of the partners (in case of partnership firm) or any Directors in case of pvt ltd., or public ltd firm being convicted by a Court of law.

#### 4. Site Visit

- The tenderer is advised to visit (upon prior approval), and examine the Site of Works and its surroundings and obtain for itself on its own responsibility and cost all information that may be necessary for preparing the bid and entering into a contract for the Works as mentioned in tender document.
  - The tenderer and any of its personnel with authority letter will be granted permission by the Employer / Owner to enter upon its premises, but only upon the express condition that the tenderer, its personnel, and agents, will release and indemnify the Employer/Owner and its personnel and agents from and against all liability in respect thereof, and will be responsible for death or personal injury, loss of or damage to property, and any other loss, damage, costs, and expenses incurred as a result of the inspection.
  - Before submitting the Bid, the Tenderer shall be deemed to have satisfied himself by actual inspection of the site and locality of the works, BMC regulations, Traffic conditions / restrictions, Availability of parking space, Transportation of materials that all conditions liable to be encountered during the execution of the works are taken into account and that the rates entered in the Price Bid document are adequate and all inclusive for the completion of work to the entire satisfaction of the Employer/Owner.
5. The Indian Bank does not bind itself to accept the lowest tender and reserves to itself the right of accepting the whole or any part of the tender and the firm shall be bound to perform the same at the rate mentioned .
6. The rate quoted by the firm shall be net (excluding GST), up to the stage of incorporation and handing over site. All taxes including (excluding GST) or any other tax on material or on finished works like Turn-over Tax, including taxes that may be newly introduced subsequent to the tender etc. in respect of this work shall be payable by the Firm and Indian Bank will not entertain any claim whatsoever in this respect. ***The rate quoted should be inclusive of all the liaison charges, expenses for taking permission, if any from BMC and other administrative agencies for carrying out the said works.***
7. The tenderer will have to deposit an EMD amount of **Rs.11,600/- ( Rupees Eleven Thousand Six Hundred Only)** in the form of Demand Draft from scheduled commercial bank in India drawn in favour of "Indian Bank," payable at Mumbai. Please note that firms registered with MSME / NSIC under single point registration with valid certificates issued by GOI are exempted from submitting EMD. Necessary Certificates must accompany bid. No other type of certificate is acceptable. The exemption and relaxation in EMD is subject to the validity & acceptance of their registration certificate on the date of opening of tender.

The bidder must pay the amount of Earnest Money as mentioned in the NIT by Bank Demand Draft payable to Indian Bank. No interest on Earnest Money deposited by the bidder shall be allowed. **The bidder should attach the Bank Draft along with the bid failing which the bid will not be considered.** No other mode of payment shall be accepted. The Earnest Money Deposit of unsuccessful bidder shall be refunded within two weeks of award of contract to the successful bidder or within one week of actual commencement of work whichever is earlier and in any case not later than three months. The Earnest Money Deposit of the successful bidder shall be refunded on the acceptance by the Employer of the Contractor's Demand Draft towards Initial Security Deposit. The EMD of the bidder, whose bid is accepted, shall be forfeit in full in case he does not start the work by stipulated date mentioned in the award letter.

Apart from EMD & ISD, **the retention amount shall be deducted from progressive running bill at 8% on the gross value of each running bill paid will be held by the Indian Bank apart from ISD until the total security deposit equals 10% of project cost.**



## 8. Initial Security Deposit

The tenderer will have to deposit an amount of 2% of Contract amount in the form of Demand Draft from Scheduled Commercial Bank in India drawn in favour of "Indian Bank," payable at Mumbai within 7 days from the date of receipt of work order as an Initial Security Deposit (ISD). The Indian Bank is not liable to pay any interest on the ISD. If the tenderer fails to provide ISD within stipulated times, it will be presumed that agency is not interested in the work and suitable action will be taken as per the tender terms.

## 9. Retention Money

The retention amount at 8% from the Gross value of each R/A or Final bills excluding GST. No interest will be paid on the Security Deposit under any circumstances will be held by the Indian Bank apart from ISD of 2%

## 10. Release of Retention Money

50% of Total security deposit will be returned on the completion of the following :

- After 30 days of the payment of the final bill.  
AND
- Taking over certificate by Bank  
AND
- Tenderer's removal of his materials, equipment, labour force, temporary sheds/stores etc. from the site. (except for a small presence required if any for the Defect Liability Period and approved by the Indian Bank).

**Balance 50%** of retention money shall be released within 30 days after satisfactory completion of defect liability period and defects free as per the contract clauses.

11. The Firm shall give a list of his relatives working with the Indian Bank along with their designations and addresses.
12. No employee of the Indian Bank is allowed to work as a contractor for a period of two years of his retirement from Indian Bank service, without the previous permission of the Indian Bank. The contract is liable to be cancelled if either the contractor or any of his employees is found at any time to be such a person who had not obtained the permission of the Indian Bank as aforesaid before submission of the bid or engagement in the service.
13. The tender for mentioned works shall remain open for acceptance for a period of 90 days from the date of opening of financial bid.
14. It will be obligatory on the part of the bidder to sign all the pages of tender documents.
15. The acceptance of tender will rest with the Indian Bank and the Indian Bank reserves to itself the authority to reject any or all of the bids received without the assignment of a reason. Bids in which any of the prescribed conditions are not fulfilled (or) are incomplete in any respect are liable to be rejected. The Indian Bank reserves the right to accept the tender in full or in part and the bidder shall have no claim for revision of rates or other conditions if his quote is accepted in parts.
16. Canvassing in connection with tender is strictly prohibited and the bids submitted by the bidders who resort to canvassing will be liable to rejection.
17. All rates shall be quoted on the proper form of the Tender alone. **All the entries to be made legibly in ink only.** Rates written in pencil or any other mode shall not be considered for evaluation and will be rejected.
18. An item rate quote containing percentage below / above will be summarily rejected. However, where a bidder voluntarily offers a rebate for payment along with sealed tender, the same may be considered.
19. **ABNORMAL RATES**

*The Contractor is expected to quote after careful analysis of costs based on the specifications mentioned in the Tender. If it is noticed that the rates quoted by the Tenderer is unusually high or unusually low, it will be sufficient cause for rejection of the Tenderer unless the Employer is convinced about the reasonableness of the rate on scrutiny of the analysis for such rate to be furnished by the Tenderer on demand. Notwithstanding anything there in stand, the rate once accepted by the Employer shall be final*

*and shall not be subject to any claim either on account of un-workability of rates or on any other ground whatsoever.*

20. The selected firm shall get all the electrical works done through the licensed electricians / permit holders as registered with or licensed by the Competent local authority in Mumbai.
21. On acceptance of the bid the name of the accredited representative(s) of the Bidder who would be responsible for taking instructions from the Indian Bank shall be communicated to the Indian Bank.
22. Special care should be taken to write the rates in figures as well as in words and the amounts in figures only, in such a way that interpolation is not possible. The total amount should be written both in words and in figures.
23. The Contractor shall comply with and give all notices required under any law, rules, regulations, or bye-law of Parliament, State Legislature or Local Authority relating to works. If needed, the Contractor has to obtain required permission/ approval from the building secretary/ association. The Contractor shall before commencing the execution of work issue a certificate to the Employer that he has obtained all the permissions Registrations and give all the notices as are required to be obtained or given under law particularly blasting permission, Police permission etc.
24. The Contractor shall be required to maintain the site and the building areas in a neat and clean condition at all times to the satisfaction of the Employer.
25. Debris and items removed from the building have to be neatly stacked at site and then periodically removed (maximum of one week), carried away by the Contractor and disposed off as per the rules and regulations of the Local Authorities concerned. No debris shall be thrown loose from upper floors. No floor, roof or other part of the building shall be over-loaded with debris or materials as to render it unsafe.
26. Employer reserves the right to insist on selection of material, workmanship, detailing and finishes, which they consider, is appropriate, and suitable for the intended use. The contractor is not eligible to claim extra on this account.
27. Employer will require the contractor to produce, samples of all the materials, accessories/ finishes prior to procurement/ manufacture. The samples of the materials for the work shall be got approved from the Employer. Failure to comply with these instructions can result in rejection of the work/ materials.
28. The bidder should note that he should execute his part of work without causing any damage to any component of the building and also without disturbing the occupants. Any damage so caused shall be made good at the cost & risk of the firm.
29. The successful bidders shall include, in the quoted price, all allied civil works such as chasing in wall, drilling holes, filling the mortar along with chicken mesh etc to complete the work. This includes scaffolding required if any to load/ unload the materials etc.
30. The successful contractor shall also be responsible for the safety and security of all their materials and also for ensuring fire prevention steps at all times in the working premises including their part of the work. The successful contractor has to place full time representative at site, the representative should have thorough subject knowledge. Bank will not be responsible for any untoward accident caused by negligence of the Contractor
31. The work shall be carried out with minimal disturbance to the existing working of Branch. Necessary barricading of the area, if required from the rest of the area shall have to be arranged by the successful contractor at no extra cost. The work is to be organized and executed so as to have least disturbance to the occupants of other offices.
32. The contractor should ensure payment of minimum wages + VDA to all labourers / workmen staff employed by him inline with central/ state labour wage act whichever higher.  
The Contractor shall at all times indemnify and keep indemnified the Employer against all losses, claims, damages or compensation including under the provisions of the payment of the Wages Act 1936, Minimum Wages Act 1948, Employer's Liability Act 1938, Workman's Compensation Act 1923, the Maternity Benefit Act 1961, the Bombay Shops and Establishments Act 1947, Industrial Disputes Act 1947, and Contract Labour (Regulation and Abolition) Act 1970 and Employees State Insurance Act 1948, Motor Vehicles Act 1988 or any modifications thereof or under any other law relating thereto and rules made thereunder from time to time or as a consequence of any accident or injury to any workman or other person in or about the work whether in the employment of the Employer or Contractor or not, and



also against all costs, charges and expenses of any suit, action or proceedings whatsoever out of such accident or injury or combination of any such claims.

33. From commencement to completion of works, the Contractor shall take full responsibility for the care of the work and for taking precautions to prevent loss or damage to the work to the maximum extent possible and shall be liable for any damage or loss that may arise to the works or any part thereof from any cause whatsoever including causes of fire, lightning, explosion, earthquake, storm, hurricane, floods, inundation, subsidence, landslides, rock slides, riots (excluding civil war, rebellion, revolution and insurrection) or any latent defect or damage and shall at his own cost repair and make good the same so that at all times the work shall be in good order and condition and in conformity in every respect with the requirements of the Contract.

For the purpose of this condition this expression "from commencement to completion of works" shall mean the period starting with the date of issue of Work Order or date of handing over of site whichever is later and ending with issue of Virtual Completion Certificate.

Without limiting the obligations and responsibilities under this condition, the Contractor shall insure and keep insured the works from commencement to completion, as aforesaid, for the full contract value including Price Variation Adjustment if any against the risk of loss or damage from any cause whatsoever including the causes enumerated in the foregoing paragraphs. In the event of there being a variation in the nature and extent of the works, the Contractor shall from time to time increase or decrease the value of the insurance correspondingly. All the premia for the insurance shall be borne and paid by the Contractor.

Before commencing the work, the Contractor shall without limiting his obligations and responsibilities under this condition, insure against any loss of life or injury to any personnel in the employment of Contractor / Sub-Contractor/nominated Sub- Contractor. For this purpose, an insurance shall be taken by the Contractor /Sub- Contractor. Such an insurance shall be taken to include both employees/workmen covered by the Workman's Compensation Act 1923, as well those employees/workmen not covered by the said Act. Separate insurance policies may be taken for employees/ workmen covered by Workman's Compensation Act 1923, and employees / workmen not covered by the said Act. All the premia shall be paid by the Contractor. Policy/Policies taken under this para for the personnel in employment with the Contractor / Sub-Contractor may be in their Employer's names of the Contractor / Sub-Contractor / nominated Sub-Contractors. In the event of any loss or injury to personnel in employment with the Contractor / Sub-Contractor / nominated Sub-Contractors, the Employer and Contractor shall recover directly from the Insurance Company and ensure that payment of the same is made to the affected parties including the Employer. The policy in original shall be deposited with the Employer.

The Contractor shall at all times indemnify and keep indemnified the Employer against all losses and claims for injuries or damage to any person or any property whatsoever which may arise out of or in consequence of the construction and maintenance of the work and against all claims, demands, proceedings, damages, costs, charges and expenses whatsoever in respect of or in relation thereto. The Contractor shall take all precautionary measures to ensure the safety of the workmen employed by it. The contractor shall be fully responsible for the any injury or damage caused to the workmen deployed by him at site for carrying out the work and Bank has nothing to do with such happenings and in no way shall be held responsible for the same.

34. The contractor shall maintain all registers as required by the Regional Labour Commissioner and should furnish the same to the Bank or its representative as and when required.
35. If the work is not started within **7 days** from the date of issue of work order then Employer may terminate the work order without assigning any reason. If during the execution of the work, the progress of work is not considered to be satisfactory and is not consistence to be in contingent with the period of the completion of the work then the Bank may terminate the work order by giving a 7 day notice to the contractor. In such case the contractor shall be liable to pay the employer any extra cost involved for the completion of the said work and will not obstruct any way in completing the work through other agency. After completion of entire work the contractor shall be paid for the actual work executed by him at the quoted rates after deducting any claims, damages.
36. The time allowed for completing the works is **60 days** to be reckoned from **4<sup>th</sup> day** from the date of Work Order / date of handing over site whichever is later. Bidder shall submit a programme (time schedule) for



executing the entire project and shall furnish the details of their scheme indicating the proposed deployment of their machinery and resources.

37. If the Contractor fails to complete any or all the works by the date/s named in **Clause 35** (Date of Completion) or within any extended time (permitted by Bank) then the Contractor shall pay or allow the Employer the sum to be worked out at **1.0%** of contract value per week to be recovered as Liquidated Damages (and not by way of penalty) for the delay, beyond the said date or extended time, as the case may be, during which the works shall remain unfinished and such damages may be deducted from any moneys due or which may become due to the Contractor. The maximum amount of Liquidated damages shall be **10%** of contract value. The contractor shall be bound to extend validity of Insurance Cover till such period of completion as may be considered necessary at their cost.
38. **Extension of time:** If in the opinion of the Employer/ Architects the works be delayed (a) by reason of any exceptionally inclement weather or (b) by reason of instructions from the employer in consequence of proceedings taken or threatened by or disputes, with adjoining or neighbouring owners or (c) by the works, or delay of other contractors nominated by the employer and not referred to in the specification or (d) by the reason of authorized extra and additions or (e) by reason or any combination or works men or strikes or lock-out affecting any of the building trade or (f) from other causes which the employer may consider are beyond the control of the contractor, the employer at the completion of the time allowed for the contract shall make fair and reasonable extension of time for completion in respect therefore. In the event of the employer failing to give possession of the site upon the day specified above, the time of completion shall be extended suitably.  
In case of such strikes or lockouts as are referred to above, the contractor shall, immediately give the employer, written notice thereof. Nevertheless he shall use his best endeavours to prevent delay, and shall do all that may be reasonably required, to the satisfaction of the employer for any extension of time for completion hereunder (which shall be final and binding on the contractor) shall be promulgated at the conclusion of such strike or lock-out and the employer shall then, in the event of an extension being, granted, determine, and declare the final completion date. The provision in clause 36 with respect to payments of liquidated damages shall be construed as if the extended date fixed by the employer was substituted for and the damages shall be deducted accordingly.
39. The successful bidder shall be required to execute an Agreement in the proforma attached with this tender document within **7 days** from the date of receipt of the notice of acceptance of bid. In the event of failure on the part of the successful bidder to sign the agreement within the above stipulated period, the earnest money will be forfeited and the acceptance of the tender shall be considered as cancelled.
40. **PAYMENT DETAILS –**
  - No advance payment shall be made to the contractor on supply of any material supplied at site for execution. Payment to the contractor shall be made as per actual work done of site.
  - All bills shall be prepared by Contractor in the form prescribed by the Employer / Architects.
  - Only one interim payment /adhoc payment is permitted. Minimum Rs.5,00,000/- or as decided by the Bank. The bills in proper forms must be duly accompanied by detailed measurements in support of the quantities of work done and must show deductions for all previous payments, retention money etc. The Architect after detailed scrutiny of the interim bill shall certify within 5 days of the date of receipt of interim bill from the Contractor subject to submission of documentation as required.
  - Bank will deduct the retention money as described in the Clause No 9 and the refund will be made as specified in the Clause No 10 .
  - All the interim payments shall be regarded as payment by way of advance against the final payment only and not as payments for work actually done and completed.
  - The final bill will be released on satisfactory completion of the entire work and on completion of all the terms and conditions / obligations spelt out and on proper submission of the bills together with the measurements properly checked by Architect & Bank's Engineer in presence of Contractor. Final Bill settlement is within 20 days from the date of proper submission of bill & measurements.



41. The bidders shall separately specify at the end of the bid the % and value of SGST and CGST as applicable. As on date 9 % CGST and 9% SGST IS APPLICABLE FOR WORKS CONTRACT. Regarding tax part, the tax rate at the time of billing shall rule over and above all documentations. Valid documents shall be produced if asked for at the time before payment. TDS for income tax is as applicable and shall be included in the quoted rates. The comparison for the least bidder shall be made with the basic price of items of work excluding “Goods and Service Tax” part.
42. At any stage i.e. during the execution of work, any kind of change required, whether it is in design or specification, the contractor must inform the concerned Department of the Bank or Architect and after getting the approval, the same has to be incorporated by the contractor.
43. Electricity & Water for work will be provided by Bank. The Contractors shall make their own arrangement for temporary stay of their workers as majority of the works will be carried out in evening and night time.
44. The contractor shall not directly or indirectly sublet the work to other party without written permission of the bank.
45. The Bank reserves the right to distribute the work for which tenders have been called, among more than one parties, if found necessary. No claim in this respect shall be considered and the contractor agrees to cooperate with other agencies appointed by the Bank.
46. Bank shall not be responsible for any loss or damage to the contractor/ labour due to any natural calamity during the course of construction. Contractor is liable to make good all the damages if any, till the work is completed and handed over to the Bank authorities
47. Contractor agencies are advised (before quoting the rates) to inspect the site of the proposed work. They must go through specifications and documents. Any clarification, if required, may be taken from the Bank before submitting the tender.
48. The quantities mentioned in schedule are provisional and likely to increase /decrease to any extent or may be omitted thus altering the aggregate value of the contract. No claim for loss of profit/business shall be entertained on this account.
49. The contractor /vendor failed to carry out the works as per schedule/Quality, the same shall be carryout with different agencies and the actual amount will be deducted from the contractor bills.
50. The contractor agency shall keep particular vigil on his workers to maintain very good workmanship of all items, failing which no payment shall be made and no claim of material / labour used shall be made to him in any case, and the same work shall be executed by him again without charging any extra cost.
51. The Bank reserves the right to accept / reject any tender without assigning any reasons.
52. Any work got executed in poor workmanship as pointed out by the Bank’ Official will have to be dismantled and redone by the Contractor on his own cost
53. Any addition, alteration or correction in the quote shall be signed and stamped properly by the contractor.

**DECLARATION :**

I / We hereby declare that I / We read and understood the above terms and conditions and that we shall abide by them if the work is awarded to us.

Signature & Seal of the Firm

## ARTICLES OF AGREEMENT

**THIS AGREEMENT** is made on this ..... day of .....month of ..... between Indian Bank and having its Zonal Office at 2<sup>nd</sup> Floor, 37, Mumbai Samachar Marg, Fort, Mumbai – 400001 (hereinafter referred to as the “Employer”) which expression shall include its successor, legal heirs and assignees of the one part.

**AND** M/s..... having its office at .....

(hereinafter referred to as the “Contractor”) which expression shall include its successor, legal heirs and assignees of the second part.

**WHEREAS** the Employer has caused drawings and bid documents for ‘Electrical Work in Existing Premises of Indian Bank Mumbai Fort Branch’

**AND** whereas the Employer has called for Tender vide ref. no. .... dated.....

**AND** whereas the contractor has submitted the Tender ref. no. .... dated ..... to the Employer on .....

**AND** whereas the Employer has issued the work order ref ..... dated..... to the contractor to do the work.

**AND** whereas the Contractor has agreed to execute the work as per drawings, specifications, conditions of contract and Work Order.

**AND** whereas the Employer has accepted the Contractor’s bid as aforesaid and whereas the bid submitted by the contractor has been accepted for such sum as may be ascertained to be payable in terms of the Bill of Quantities and which sum is estimated to be Rs. .... (Rupees ..... ) hereinafter referred to as the said “Contract Agreement”.

### **NOW THIS AGREEMENT WITNESSETH AS FOLLOWS:-**

- 1) In consideration of the said Contract Sum to be paid at the times and in the manner set forth in the said Conditions the Contractor shall carry out and complete the Works in terms and conditions herein contained and according to the general conditions of the contract, notice inviting tender, special conditions of contract, general scope of work, technical specifications, schedule of rates and instructions to be given by and the supervision of and to the entire satisfaction of the Employer.
- 2) **Contract Price, Taxes and Payment Terms :**

Total contract price is Rs. .... + GST which is inclusive of cost of materials, equipment, labour, installation charges, liaising charges and tools and tackles required for execution of the job. Above price is inclusive of all taxes & duties except GST in respect of this contract. No claim in this respect will be entertained. Income tax on payments will be deducted and deposited by Employer in accordance with the sales tax law of the state and the provisions of tax deductions at source under income tax act 1961.

3) **Completion Period:**

**Time is the essence of the Contract.** The work is to be completed in all respects within **60 days** reckoned from 7<sup>th</sup> day from the date of issue of the Work Order or handing over of site whichever is later. If the Contractor fails to complete the job within the agreed time period the Contractor will have to bear liquidated damages as per the relevant clause mentioned in the Tender Documents.

4) **Inspection of Site:**

The Contractor has inspected the site before submitting his bid and has satisfied himself as to the nature of the work to be executed on the site. Any difficulties which the Contractor may come across in the course of the work shall in no way relieve the contractor to claim or receive extra payment unless the Employer is of the opinion that such difficulties could not have been foreseen and the Employer consents in writing.

5) **Supply of Material and Labour:**

The Contractor shall arrange all labour, materials, equipments, tools, tackles and everything necessary for the completion of the work. The Contractor will assume all responsibility for the safety, protection and accounting of all material and equipment and the work during construction. All materials used by the Contractor shall be of the best quality conforming to the required specification mentioned in the bid document and will be subject to the approval of the Employer. All such materials not approved by the Employer shall be removed at once by the Contractor at his own expense. The Contractor shall also at his own expense arrange for carrying out any test of materials which the Employer may from time to time require or if so desired by the employer.

6) **Defective Work / Materials:**

If any part of the work done by the Contractor is found defective in workmanship or if bad or inferior materials have been used the Contractor shall at his own risk and cost demolish all such defective work and rebuild the same and / or replace the bad or inferior materials used within a time frame mentioned to the satisfaction of the Employer. The decision of the Employer in this regard shall be final and binding on the Contractor. In case of default of the contractor to remove the defective work and rebuild the same or replace bad or inferior materials as directed by the Employer, the Employer shall be entitled to employ anyone else to carry out the same at risk and cost of the Contractor and recover all expenses incurred in this regard from the contractor.

7) **Inspection of Work:**

During progress of the work the Employer shall be entitled at all times to have access to and inspect the work.

8) **Supervision:**

The Contractor shall provide one or more competent and technical qualified engineers duly and fully authorized to act on his behalf in all matters relating to the works to be carried out under or any other matter concerning this agreement and who shall at all times be present at the works while any work is in progress as per directions, explanations & instructions of Employer.



**9) Compliance with Statutory Regulations & Work Rules:**

The Contractor shall be responsible for complying with the applicable laws / bye laws / Regulations in force from time to time and shall have to bear all statutory liabilities to the workers / personnel engaged for the job. Nothing will be paid extra in this regard. If any amount is paid by the Employer with this regard the same amount shall be deducted from the Contractor's dues. The Contractor shall have to arrange insurance cover for the workers / personnel engaged by him for the job.

**10) Determination of Contract:**

In the event of Contractor failing to keep / adhere to agreed schedule of work, or in the event of the Contractor failing to comply with the provisions of this contract by default and / or negligence and / or suspension of work or in the event of Contractor failing to complete the work within the stipulated period, the Employer may terminate this Agreement forthwith and employ, at the Contractor's risk and cost, another contractor or sufficient number of workmen to complete the work.

**11) Force Majeure:**

This clause will be operative only if the work is delayed by

- a. Acts of God
- b. Earthquake or floods or similar natural calamities.
- c. Serious loss or damage by fire or lightning.

In case any Force Majeure condition herein mentioned occurs and continues for a period exceeding 15 days the parties hereto undertake to sit together and devise ways for expeditious and proper performance of the obligations of the parties under this order.

**12) Arbitration:**

" In the event of any dispute or difference relating to interpretation and application of provisions of the contract and all disputes/ claims whatsoever which shall either during the continuance of the contract or afterwards either between the parties to the contract or the respective representatives touching the construction/ application of any provision/ clause mentioned in the contract or any account or liability between the parties to the contract or as to any act or deed or omission of any party to the contract, in any way relating to these presents, shall be first at the discretion of the Bank attempted to be resolved in good faith by mutual discussion within 30 days of the dispute or question being raised failing which the same shall be settled by arbitration in accordance with provisions of Indian arbitration and Conciliation act 1996.

The Parties concerned shall designate an arbitrator on mutual consent/ consensus. The venue of the arbitration shall be exclusively at Mumbai and any award passed by arbitrator shall be final, conclusive and binding upon the parties and shall be deemed to have been made between parties themselves. The parties to the dispute shall share equally the cost of arbitration as intimated by the arbitrator".

**IN WITNESS** whereof the said contracting parties have set their hands and seals on the day and year first hereinabove witness.

Witness Address

Employer

Witness Address

Contractor

**List of Materials of Approved Brand And/ Or Manufacture**

| SL NO | Description                                                                                                                        | Make of materials                                               |
|-------|------------------------------------------------------------------------------------------------------------------------------------|-----------------------------------------------------------------|
| 1     | LT Panel / DB / Enclosure                                                                                                          | Legrand / Schneider / Siemens / LK / Hager / Havells            |
| 2     | MCB / MCCB / ELCB / Isolator                                                                                                       | Legrand / Schneider / Siemens / LK / Hager / Havells            |
| 3     | Changeover / Selector Switch                                                                                                       | LK / Legrand / ABB / Havells                                    |
| 4     | Copper Armoured / Unarmoured Cable                                                                                                 | Polycab / Finolex / RR Kabel / Havells                          |
| 5     | PVC Conduit / Accessories (ISI Approved)                                                                                           | Precision / Avonplast / Anchor                                  |
| 6     | Cable Tray / Accessories                                                                                                           | Legrand / Slotco / Profab / Technofab                           |
| 7     | Cable Glands / Lugs                                                                                                                | Dowells / Comet / 3M                                            |
| 8     | PVC Copper Wires- PVC insulated HR-FR-LSH-LF (Heat Resistant Flame Retardant Low Smoke Halogen – Lead Free. (To be ROHS Compliant) | Polycab / Finolex / Havells / ANCHOR                            |
| 9     | Light Fixtures (LED)                                                                                                               | Philips / Crompton / Havells                                    |
| 10    | Ceilings / Metal Wall Mounted Fans                                                                                                 | Orient / Crompton / Usha / Havells                              |
| 11    | Exhaust Fans                                                                                                                       | Almonard / Crompton / Orient                                    |
| 12    | Industrial Fans                                                                                                                    | Crompton / Usha / Orient                                        |
| 13    | Indication Lamp                                                                                                                    | LK / Teknic / C&S                                               |
| 14    | Modular Switches / Socket / MS Boxes                                                                                               | Anchor (Roma Plus) / Legrand (Myrius) / Honeywell (Blenze Plus) |
| 15    | LT Cable                                                                                                                           | Polycab / Finolex / Anchor                                      |
| 16    | SPEAKER                                                                                                                            | BOSCH / AHUJA / JBL                                             |
| 17    | RJ 11 socket accessories / CAT Cable / Patch Cords / I/O Ports / Faceplates / Patch Panels                                         | D-Link / Legrand / Schneider                                    |
| 18    | G.I. Pipes and Fittings (ISI approved)                                                                                             | TATA / JINDAL / Supreme                                         |
| 19    | G.I Strip / Flats / Hot dip galvanized for corrosion resistance                                                                    | TATA / JINDAL / SAIL                                            |
| 20    | Earthing Materials                                                                                                                 |                                                                 |
| a     | GI / Copper Earth Electrodes                                                                                                       | Ashlok / JK / Lotus / Super / True Power                        |

|          |                                     |                                          |
|----------|-------------------------------------|------------------------------------------|
| <b>b</b> | <b>Chemical Earthing Electrodes</b> | Ashlok / JK / Lotus / Super / True Power |
| <b>c</b> | <b>Earth Enhancing Compound</b>     | Ashlok / JK / Lotus / Super / Marconite  |
| <b>d</b> | <b>Copper Bonded Rods</b>           | Erico / Super / True Power / JK          |
| <b>e</b> | <b>Earth Pit Covers</b>             | Super / Lotus / JK / True Power          |
| <b>f</b> | <b>Copper Strip / Flats</b>         | Hindalco / Vedanta / Finolex             |
| <b>g</b> | <b>GI Strip / Flats</b>             | TATA / Jindal / Sail / Bhushan           |
| <b>h</b> | <b>Lightning Arrestors</b>          | JK / Super / Ashlok / True Power         |
| <b>i</b> | <b>Test Links / Disconnectors</b>   | JK / Super / Lotus / True Power          |

Note –

1. Materials mentioned in the specification shall be used for the work. If specified material is not available prior approval of the Employer shall be taken to use other brands.
2. Preference of makes, supply of items should be consulted with client/consultant before effecting of supply.

**NAME AND ADDRESS OF THE CONTRACTOR:**

**SIGN & SEAL OF THE CONTRACTOR:**

**Date:**



**BILL OF QUANTITIES****(PRICE BID)****(TO BE SUBMITTED IN SEPARATE ENVELOPE)**

| S.N<br>O | DESCRIPTION                                                                                                                                                                                                                                                                                                                                                                                                                                                                                                                                                  | QUANTITY | UNIT | RATE PER<br>QUANTITY<br>(Exclusive<br>of GST)<br>Rs. | TOTAL<br>AMOUNT<br>(Exclusive<br>of GST)<br>Rs. |
|----------|--------------------------------------------------------------------------------------------------------------------------------------------------------------------------------------------------------------------------------------------------------------------------------------------------------------------------------------------------------------------------------------------------------------------------------------------------------------------------------------------------------------------------------------------------------------|----------|------|------------------------------------------------------|-------------------------------------------------|
| <b>I</b> | <b>MAIN LT PANEL /DBs</b>                                                                                                                                                                                                                                                                                                                                                                                                                                                                                                                                    |          |      |                                                      |                                                 |
| 1        | Supply and installation of main LT panel, wall mounted front operated totally enclosed vermin proof, indoor non-drawout-cubicle type power panel fabricated out of 2mm thk CRCA sheet having gasketed hinged cover on each cubicle fully powder coated after 7 Tank treatment, incorporating horizontal and vertical sleeved copper busbars, complete with all internal wiring, danger board, 2 earthing legs, cable chamber etc as required, housing below mentioned switch gears / meter ( GA drawing of the panel got to be approved by Bank / Architect) | 1        | SET  |                                                      |                                                 |
|          | 1No.,125A,FP, Changeover Switch + 1 no. , 125A,TP, MCCB with ELR(0-3A) and CBCT as Incomer                                                                                                                                                                                                                                                                                                                                                                                                                                                                   |          |      |                                                      |                                                 |
|          | 2 nos. 40A TPN & 4 nos. 40 A DP, MCB, 2 Nos 63 A TPN MCCB outgoing                                                                                                                                                                                                                                                                                                                                                                                                                                                                                           |          |      |                                                      |                                                 |
|          | 1 no., 0-125A, Ammeter with CTand selector switch                                                                                                                                                                                                                                                                                                                                                                                                                                                                                                            |          |      |                                                      |                                                 |
|          | 1no., 0-500V, Voltmeter with selector switch and fuse                                                                                                                                                                                                                                                                                                                                                                                                                                                                                                        |          |      |                                                      |                                                 |
|          | 1Set, TPN, Copper busbars of size 20mm x 5mm thk PVC insulated suitable for 125 Amp load                                                                                                                                                                                                                                                                                                                                                                                                                                                                     |          |      |                                                      |                                                 |
|          | 1 Set, RYB, indicating lamps with resistors and fuses                                                                                                                                                                                                                                                                                                                                                                                                                                                                                                        |          |      |                                                      |                                                 |
| 2        | Supply and installation of <b>40 KVAR Microprocessor controlled APFC panel</b> , floor/wall mounted front operated totally enclosed vermin proof, indoor non-drawout-cubicle type power panel fabricated out of 2mm thk CRCA sheet having gasketed hinged cover on each cubicle fully powder coated with following accessories                                                                                                                                                                                                                               | 1        | SET  |                                                      |                                                 |
|          | 1No.100A,TP, MCCB as incomer                                                                                                                                                                                                                                                                                                                                                                                                                                                                                                                                 |          |      |                                                      |                                                 |
|          | 2 nos. of 40A 3P contactor & 1 no. 25A 3P contactor                                                                                                                                                                                                                                                                                                                                                                                                                                                                                                          |          |      |                                                      |                                                 |
|          | 2 nos. 40A MCB & 1 no. 25A MCB                                                                                                                                                                                                                                                                                                                                                                                                                                                                                                                               |          |      |                                                      |                                                 |
|          | 2 nos. 10KVAR & 1 nos of 5 KVAR Capacitor of EPCOS Make only                                                                                                                                                                                                                                                                                                                                                                                                                                                                                                 |          |      |                                                      |                                                 |
|          | Suitable bus bar for connecting the contactors and MCB's, Capacitors                                                                                                                                                                                                                                                                                                                                                                                                                                                                                         |          |      |                                                      |                                                 |
|          | 1 no. 3 step APFC relay suitable for above arrangement                                                                                                                                                                                                                                                                                                                                                                                                                                                                                                       |          |      |                                                      |                                                 |



|   |                                                                                                                                                                                                                                                                                                                                                                                                                                                                           |   |      |  |  |
|---|---------------------------------------------------------------------------------------------------------------------------------------------------------------------------------------------------------------------------------------------------------------------------------------------------------------------------------------------------------------------------------------------------------------------------------------------------------------------------|---|------|--|--|
|   | ON/OFF/TRIP push button for each capacitor                                                                                                                                                                                                                                                                                                                                                                                                                                |   |      |  |  |
|   | ON/OFF/TRIP indication lamp for each capacitor                                                                                                                                                                                                                                                                                                                                                                                                                            |   |      |  |  |
|   | 1 Set, RYB, indicating LED lamps with resistors and fuses for incomer.                                                                                                                                                                                                                                                                                                                                                                                                    |   |      |  |  |
| 3 | Supply and installation of 4 way, TP&N 'MCB type Distribution Board(double door) flush mounted on wall, sheet metal fabricated, powder coated, having dust-proof and vermin 'proof, gasketed and hinged door with all internals such as DIN rails, neutral-link, interconnected wiring, complete with earthing legs, housing following switch gears (Double door HORIZONTAL DB) - LIGHT DB                                                                                | 1 | SET  |  |  |
| a | 1 no., 40A, TPN, RCBO (30mA) incomer                                                                                                                                                                                                                                                                                                                                                                                                                                      |   |      |  |  |
| b | 12 nos, 16A, SP, MCB outgoing                                                                                                                                                                                                                                                                                                                                                                                                                                             |   |      |  |  |
| 4 | Supply and installation of 4 way, TP&N 'MCB type Distribution Board(double door) flush mounted on wall, sheet metal fabricated, powder coated, having dust-proof and vermin 'proof, gasketed and hinged door with all internals such as DIN rails, neutral-link, interconnected wiring, complete with earthing legs, housing following switch gears ( Double door VERTICAL DB) - POWER DB                                                                                 | 1 | SET  |  |  |
| a | 1 no., 63A, TPN, MCB incomer                                                                                                                                                                                                                                                                                                                                                                                                                                              |   |      |  |  |
| b | 12 nos, 25A, SP, MCB outgoing                                                                                                                                                                                                                                                                                                                                                                                                                                             |   |      |  |  |
| 5 | S & I of SPN, DB for distribution of input power to UPSs as per SLD having below mentioned switchgears (Earth bar inside these DB should be insulated from the body) (UPS-INPUT & ATM Room- HORIZONTAL DB)                                                                                                                                                                                                                                                                | 2 | SET  |  |  |
| a | 1 no,40A, DP, Isolator incomer                                                                                                                                                                                                                                                                                                                                                                                                                                            |   |      |  |  |
| b | 3 Nos. 40A, DP, MCB, outgoing                                                                                                                                                                                                                                                                                                                                                                                                                                             |   |      |  |  |
| 6 | S & I of SPN, DB for distribution to all computer power points on workstations, having below mentioned switchgears (Earth bar inside these DB should be insulated from the body) (UPS-OUTPUT-DB)                                                                                                                                                                                                                                                                          | 2 | SET  |  |  |
| a | 1 no, 63 A, SPN, MCB, incomer                                                                                                                                                                                                                                                                                                                                                                                                                                             |   |      |  |  |
| b | 6nos, 16A, SP, MCB, outgoing                                                                                                                                                                                                                                                                                                                                                                                                                                              |   |      |  |  |
| 7 | <b>A.C. point wiring:</b> Supply, installation, testing & commissioning of A.C. point wiring from MCB DB to A.C. point with <b>2 nos. 4 sq.mm. PVC insulated copper earth FRLS copper wire and 1 no. 2.5sq.mm. PVC insulated FRLS wire</b> (with proper R,Y,B color code ) pulled through heavy gauge PVC conduits laid concealed over false ceiling or in wall chases including circuit wires. Rate shall include Supply & installation of <b>1 No of 25A industrial</b> | 7 | Nos. |  |  |

|            |                                                                                                                                                                                                                                                                                                                                                                                                                                                                                                                                                                                                                          |     |      |  |  |
|------------|--------------------------------------------------------------------------------------------------------------------------------------------------------------------------------------------------------------------------------------------------------------------------------------------------------------------------------------------------------------------------------------------------------------------------------------------------------------------------------------------------------------------------------------------------------------------------------------------------------------------------|-----|------|--|--|
|            | <b>socket and plug top &amp; controlling MCB</b> and all related accessories. (Rate to include supply & installation of PVC conduits of required size generally as per the drawing.( For split Acs & cassette AC indoor)                                                                                                                                                                                                                                                                                                                                                                                                 |     |      |  |  |
| 8          | S & I of SPN D/D consumer Unit with 8 ways with suitable DP incomer and SP out going MCB's for Signage.                                                                                                                                                                                                                                                                                                                                                                                                                                                                                                                  | 1   | Nos. |  |  |
| 9          | Supply and installation of 15 AMP Three Pin Top                                                                                                                                                                                                                                                                                                                                                                                                                                                                                                                                                                          | 5   | Nos. |  |  |
| 10         | Supply and Installation of 63 amp 4 POL MCB + MS BOX for UPS                                                                                                                                                                                                                                                                                                                                                                                                                                                                                                                                                             | 2   | Nos. |  |  |
| 11         | Supply and Installation of 63 amp 4 POL MCB + MS BOX for outdoor unit                                                                                                                                                                                                                                                                                                                                                                                                                                                                                                                                                    | 2   | Nos. |  |  |
| <b>II</b>  | <b>CABELS / MAINS</b>                                                                                                                                                                                                                                                                                                                                                                                                                                                                                                                                                                                                    |     |      |  |  |
| 1          | S & I of 1100V grade armored cable having sector / circular shaped aluminum / copper conductor PVC insulated cores, laid up, PVC tape wrapped inner sheathed, GI strip / wire armored and overall extruded PVC sheathed confirming to IS: 1554, laid on wall or ceiling using GI clamps and spacers as per route shown at site and further as directed by Bank / Architect in the following sizes including S & I of end termination of above mentioned cables including compressed type brass glands, crimping type copper lugs, insulation tape etc. as 'required complete with earthing of glands in following sizes. |     |      |  |  |
| a          | 4C x 16 Sq.mm Copper                                                                                                                                                                                                                                                                                                                                                                                                                                                                                                                                                                                                     | 10  | Mtr. |  |  |
| b          | 4C x 6 Sq.mm Copper                                                                                                                                                                                                                                                                                                                                                                                                                                                                                                                                                                                                      | 120 | Mtr. |  |  |
| c          | 3C x 4.0 Sq.mm Copper                                                                                                                                                                                                                                                                                                                                                                                                                                                                                                                                                                                                    | 100 | Mtr. |  |  |
| d          | 3Cx 10Sq.mm Copper                                                                                                                                                                                                                                                                                                                                                                                                                                                                                                                                                                                                       | 10  | Mtr. |  |  |
| <b>III</b> | <b>WIRING</b>                                                                                                                                                                                                                                                                                                                                                                                                                                                                                                                                                                                                            |     |      |  |  |
| 1          | Supply & Installation of concealed point wiring using 600V grade 2.5 sqmm copper conductor PVC insulated wires (with proper R,Y,B color code ) pulled through heavy gauge PVC conduits laid concealed over false ceiling or in wall chases including circuit wires from the relevant DB and also including 1.5 Sq.mm Green Colour Copper earth wire and provision of grid plate type ( ROMA) switches and sockets as approved by Bank / Architect. Each circuit feeding not more than 8 points / 800 W as per the following configuration.                                                                               |     |      |  |  |
| a          | Primary light points including the cost of 5A switch                                                                                                                                                                                                                                                                                                                                                                                                                                                                                                                                                                     | 150 | Pts. |  |  |
| b          | Secondary light points looped from the above point                                                                                                                                                                                                                                                                                                                                                                                                                                                                                                                                                                       | 70  | Pts. |  |  |
| c          | 5A plug point as primary point                                                                                                                                                                                                                                                                                                                                                                                                                                                                                                                                                                                           | 10  | Pts. |  |  |
| d          | Secondary 5A Plug point on switch board                                                                                                                                                                                                                                                                                                                                                                                                                                                                                                                                                                                  | 25  | Pts. |  |  |
| e          | 15A Plug Point directly taken from DB                                                                                                                                                                                                                                                                                                                                                                                                                                                                                                                                                                                    | 10  | Pts. |  |  |
| f          | Exhaust fan point consisting of 5A socket near fan and switch on light switch board                                                                                                                                                                                                                                                                                                                                                                                                                                                                                                                                      | 8   | Pts. |  |  |

|    |                                                                                                                                                                                                                                                                                                                                                                                                                                                                                                                                                                                                                                                                                                                              |    |      |  |  |
|----|------------------------------------------------------------------------------------------------------------------------------------------------------------------------------------------------------------------------------------------------------------------------------------------------------------------------------------------------------------------------------------------------------------------------------------------------------------------------------------------------------------------------------------------------------------------------------------------------------------------------------------------------------------------------------------------------------------------------------|----|------|--|--|
| g  | Wiring for Signages with 2R x 2.5 Sq.mm and 1R x 1.5 Sq.mm, PVC insulated copper conductor flexible cable to be connected to the SPN D/D consumer unit installed near rolling shutter outside the Branch                                                                                                                                                                                                                                                                                                                                                                                                                                                                                                                     | 2  | SET  |  |  |
| h  | S & I of point wiring for UPS or stabilized power plug points on workstations / table for computers using 3C X 2.5 Sq.mm Cu. PVC sheathed white color flexible cable <b>pulled through above False ceiling and cutting the walls as raceways are not provided</b> and taken upto table top using PVC rigid or flexible conduits run within wooden or metal partitions. Each point consisting of 3 Nos of 2 / 3 Pin sockets and 1 No 15A switch, wired together forming one point. Switches and sockets to be (ROMA). Earth wire to be of Green colour only. ( Only 2 tables served by one circuit from UPS DB) <b>Cost is inclusive of necessary cutting the walls and including PVC Pipe required for taking the wires.</b> | 35 | Pts. |  |  |
| i  | S & I of points similar to above but to be used as raw power point on the tables consisting of one 5/15A socket with switch of other color and flexible cable of black color & circuit taken from Lighting DB ( 4 tables served by one circuit from LDB/PDB) <b>Taken Above False ceiling and through walls as raceways are not provided. Cost is inclusive of necessary cutting the walls and including PVC Pipe required for taking the wires.</b>                                                                                                                                                                                                                                                                         | 30 | Pts. |  |  |
| IV | <b>FLOOR -RACEWAYS:</b>                                                                                                                                                                                                                                                                                                                                                                                                                                                                                                                                                                                                                                                                                                      |    |      |  |  |
| 1  | S & I of floor - raceways consisting of 2 Nos of 3" x 1.5"x 3mm thick rectangular aluminium anodized box sections including chasing and refilling as per the route shown in the drawing and as approved by consultant at site including clamping at every open pipe ends by suitable plastic end covers against entry of dust or anyother foreign material.                                                                                                                                                                                                                                                                                                                                                                  | 75 | Mtr. |  |  |
| 2  | S & I of galvanised floor junction boxes with SS brushed finish 14 SWG ( 2mm Thick) cover properly fixed with screws, for above mentioned raceways , of size 300mm x 300mm x 2.5 mm depth, fabricated out of 2.5 mm thick G.I. sheet with proper cutouts on the sides for pipe entry & screwed top cover with rubber gasket and suitable knockouts for flexible conduit outlets as per the drawing enclosed.                                                                                                                                                                                                                                                                                                                 | 15 | Nos. |  |  |
| V  | <b>ELECTRICAL FITTINGS &amp; FIXTURES</b>                                                                                                                                                                                                                                                                                                                                                                                                                                                                                                                                                                                                                                                                                    |    |      |  |  |
| 1  | S & I of lighting fixtures as per the details given below including necessary hardware such as clamps,nuts, bolts, nails, screws and suspension chains as required for fixing the fixtures in position as directed by architect / Consultant.                                                                                                                                                                                                                                                                                                                                                                                                                                                                                |    |      |  |  |
| a  | 600 X 600 LED LIGHT FITTING                                                                                                                                                                                                                                                                                                                                                                                                                                                                                                                                                                                                                                                                                                  | 60 | Nos. |  |  |

|           |                                                                                                                                                                                                                                                                                                                                                    |    |      |  |  |
|-----------|----------------------------------------------------------------------------------------------------------------------------------------------------------------------------------------------------------------------------------------------------------------------------------------------------------------------------------------------------|----|------|--|--|
|           | SITC of 36 W LED light fixture Philips Green Square 1 or equivalent as Selected By Bank (Philips Catalog No - RC370 LED 29S-6500 PSEWH OR EQUIVALENT )                                                                                                                                                                                             |    |      |  |  |
| b         | 4'0" long LED fitting                                                                                                                                                                                                                                                                                                                              | 30 | Nos. |  |  |
| c         | 16/15 watt LED Downlighters                                                                                                                                                                                                                                                                                                                        | 50 | Nos. |  |  |
| d         | 40 watt LED down light fitting                                                                                                                                                                                                                                                                                                                     | 30 | Nos. |  |  |
| e         | Chandelier LED Light fitting. Light fitting to be approved by Bank                                                                                                                                                                                                                                                                                 | 6  | Nos. |  |  |
| f         | LED picture light fitting                                                                                                                                                                                                                                                                                                                          | 14 | Nos. |  |  |
| g         | 250mm dia wall mounted exhaust fan of decorative plastic body and blade with louvers on the outside (Newtek/Cromton/Approved Equivalent)                                                                                                                                                                                                           | 8  | Nos. |  |  |
| h         | LED Rope light with driver                                                                                                                                                                                                                                                                                                                         | 60 | R.m. |  |  |
| i         | Supply, Installation, Testing & Commissioning of 48" ceiling type fans 230V Single phase, electronic fan regulator, S type hook, with all accessories. The rate shall include connection with 3 core 1.5 sq.mm. flexible copper cable from point to the ceiling fan.                                                                               | 3  | Nos. |  |  |
| j         | Supply, Installation, Testing & Commissioning of wall mounted metal fan with all accessories. The rate shall include connection with 3 core 1.5 sq.mm. flexible copper cable from point to the fan.                                                                                                                                                | 15 | Nos. |  |  |
| <b>VI</b> | <b>EARTHING</b>                                                                                                                                                                                                                                                                                                                                    |    |      |  |  |
| 1         | S & I of earth pit comprising of 600mm x 600mm x 3mm. thick copper plate buried at a minimum depth of 2.5 meter including necessary materials like charcoal, salt etc as required conforming to BIS standards having brick masonry chamber with hinged cover and watering arrangement.                                                             | 1  | Nos. |  |  |
| 2         | S & I of copper /GI earthing wires/strips in following sizes                                                                                                                                                                                                                                                                                       |    |      |  |  |
| a         | 8 SWG copper bare wire                                                                                                                                                                                                                                                                                                                             | 50 | Mtr. |  |  |
| b         | 25mm x 3mm thick GI strip                                                                                                                                                                                                                                                                                                                          | 15 | Mtr. |  |  |
| 3         | S & I of isolated earthing / grounding system for computers etc.using insulated green copper earthing wire laid through 20mm PVC conduits from separately made earth pit to the equipment in following sizes                                                                                                                                       |    |      |  |  |
| a         | 6 sqmm copper in 20mm PVC conduit                                                                                                                                                                                                                                                                                                                  | 50 | Mtr. |  |  |
| <b>VI</b> | <b>MUSIC SYSTEM</b>                                                                                                                                                                                                                                                                                                                                |    |      |  |  |
| 1         | S & I of point wiring for music - cum PA system comprising of 2x 1.0 sqmm stranded , copper conductor , flexible PVC insulated and PVC Sheathed wire pulled through 20 mm dia .PVC heavy gauge conduits and looped from one speaker to other and to the volume control and control switch wherever applicable and finally terminated at Tag Block. | 14 | Pts. |  |  |

|                                          |                                                                                                                                                                                                                                                                                                                                                                            |    |      |  |  |
|------------------------------------------|----------------------------------------------------------------------------------------------------------------------------------------------------------------------------------------------------------------------------------------------------------------------------------------------------------------------------------------------------------------------------|----|------|--|--|
| 2                                        | S & I of Philips / Bosch/Ahuja make music speaker flush mounted on the false ceiling with proper clamping arrangement                                                                                                                                                                                                                                                      | 14 | Nos. |  |  |
| 3                                        | S & I of volume control - cum - ON - OFF switch flush mounted on wall along with other electrical switches .The size and plate of the regulating knob should match with other switches nearby (MK make)                                                                                                                                                                    | 3  | Nos. |  |  |
| 4                                        | Supply and Installation of Music Station comprising of amplifier and microphone tailored to our office's needs, including sound distribution, zone control, and ambient noise considerations.                                                                                                                                                                              | 1  | Nos. |  |  |
| <b>VII LAN CABLING AND VOICE OUTLETS</b> |                                                                                                                                                                                                                                                                                                                                                                            |    |      |  |  |
| 1                                        | Providing and laying Cat 6 cable (Make : Systimax) for data in conduits and providing & terminating with RJ-45 (Krone make) with face plates / I/O Ports in suitable modular / MS box from server / EPABX room to individual work stations and terminating other end with RJ-45 connector including numbering with ferule etc. complete.                                   |    |      |  |  |
| a                                        | RJ-45 for data points (Through wall, false ceiling, raceway)                                                                                                                                                                                                                                                                                                               | 35 | Pts. |  |  |
| b                                        | Supply and fixing of 24 port patch panel (D-link) complete with crimping                                                                                                                                                                                                                                                                                                   | 1  | Nos. |  |  |
| c                                        | Supply and fixing of 24 port 10/100 MBPS Auto sensing (UTP, RJ 45) SWITCH (D-link)                                                                                                                                                                                                                                                                                         | 1  | Nos. |  |  |
| d                                        | Supply, installation, commissioning of 12 U rack complete with power point, cooling fan and required accessories.                                                                                                                                                                                                                                                          | 1  | Nos. |  |  |
| e                                        | Supply and fixing of 1 meter long factory crimped patch cord.                                                                                                                                                                                                                                                                                                              | 30 | Nos. |  |  |
| f                                        | Supply and fixing of 2 meter long factory crimped patch cord.                                                                                                                                                                                                                                                                                                              | 30 | Nos. |  |  |
| 2                                        | Providing and laying Cat 5 cable (Make: D-Link) for voice in existing conduits for voice and providing & terminating with RJ-11 (Krone make) with face plates / I/O Ports in suitable modular / MS box from server / EPABX room to individual work stations and terminate the other end with RJ-11 connector or on a Crone module with numbering of each cable with Ferule |    |      |  |  |
|                                          | RJ-11 for Voice (Through wall, false ceiling, raceway)                                                                                                                                                                                                                                                                                                                     | 25 | Pts. |  |  |
| 3                                        | Providing, laying and connecting PVC insulated copper telephone cable of following sizes including termination in approved manner.                                                                                                                                                                                                                                         |    |      |  |  |
|                                          | 20-pair                                                                                                                                                                                                                                                                                                                                                                    | 20 | Mtr. |  |  |
| 4                                        | Providing and fixing of telephone tag block (Krone) of following sizes housed in GI box with cover of suitable size including termination                                                                                                                                                                                                                                  |    |      |  |  |
|                                          | 20 pair                                                                                                                                                                                                                                                                                                                                                                    | 2  | Nos. |  |  |

|             |                                                                                                                                                                                                                                                                                                                                                                                                                                                                     |   |      |     |     |
|-------------|---------------------------------------------------------------------------------------------------------------------------------------------------------------------------------------------------------------------------------------------------------------------------------------------------------------------------------------------------------------------------------------------------------------------------------------------------------------------|---|------|-----|-----|
| <b>VIII</b> | <b>TEMPORARY ARRANGEMENT, REMOVING &amp; REBATE</b>                                                                                                                                                                                                                                                                                                                                                                                                                 |   |      |     |     |
| 1           | Carefully demolishing / dismantling of the existing wiring, cables, switches, sockets. plates, fittings, fixtures etc. and any other material required to be removed for working on site & compliance of all the activities on site including removal of debris from site and carting away the same by the contractor as per the directions of the Architect & Making temporary arrangement for seating using existing table by shifting as directed etc. complete. | 1 | L.S. |     |     |
| 2           | Rebate for buy Back/ disposal/ purchasing of wiring, cables, switches, sockets. plates, fittings, fixtures etc. including removing and stacking the removed material at given place, carting away debris, cleaning etc. complete.                                                                                                                                                                                                                                   | 1 | LS   | (-) | (-) |
| <b>I</b>    | <b>TOTAL AMOUNT EXCLUSIVE OF GST</b>                                                                                                                                                                                                                                                                                                                                                                                                                                |   |      |     |     |
| <b>II</b>   | <b>GST AMOUNT (..... %)</b>                                                                                                                                                                                                                                                                                                                                                                                                                                         |   |      |     |     |
| <b>III</b>  | <b>GROSS AMOUNT INCLUSIVE OF GST</b>                                                                                                                                                                                                                                                                                                                                                                                                                                |   |      |     |     |

**NOTE:**

- The above quantities are approximately taken for estimation purpose they may increase or decrease. Contractor will be paid for actual work executes against each item. Brief specifications are given for each item. Minor verification in design and specification for each item are likely for which no extra payment will be given. Any of these items may be cancelled.
- The rates quoted shall also include MCGM / Local Authorities Permission for smooth functioning the work.

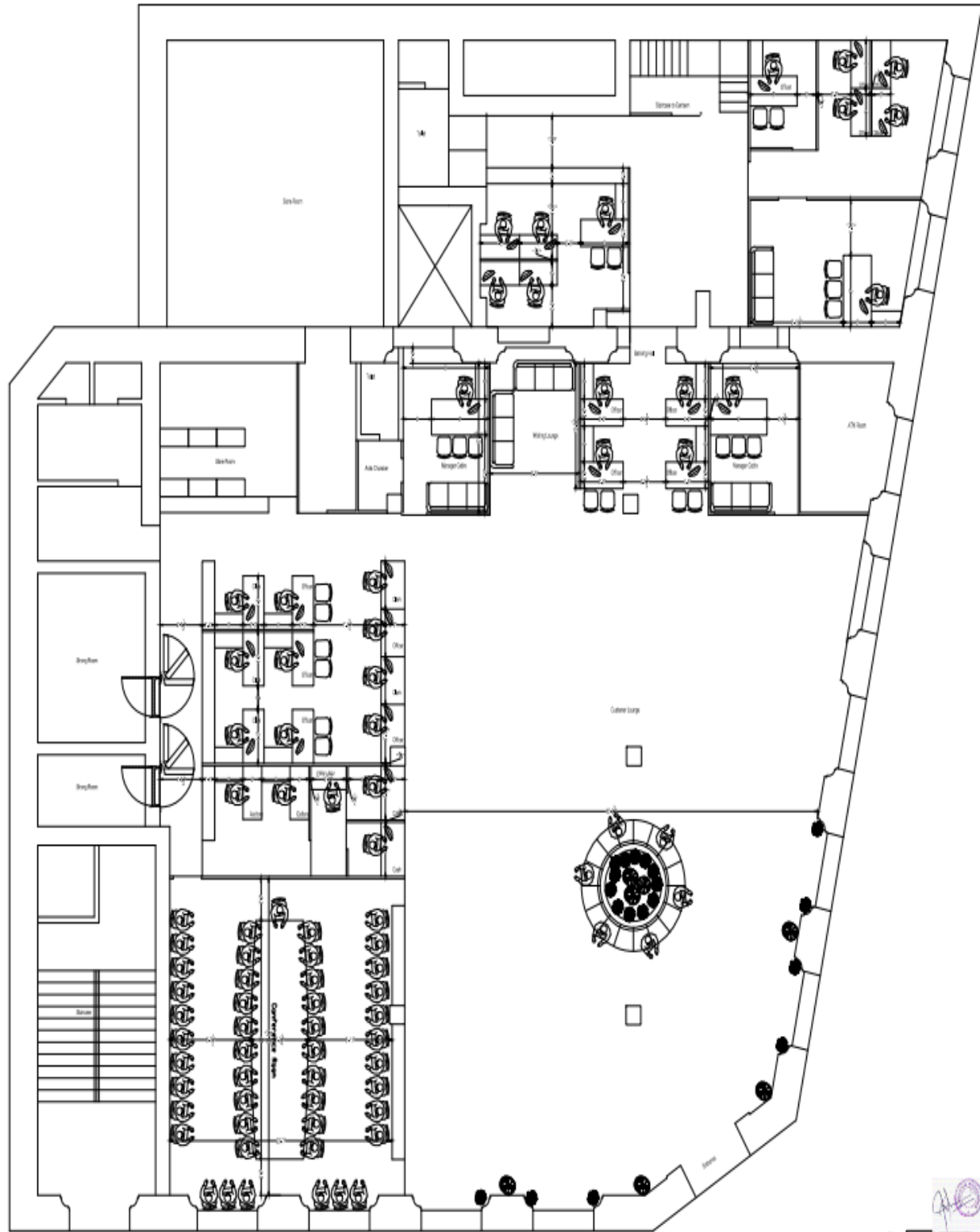
**GROSS AMOUNT IN WORDS :**

Rupees.....only

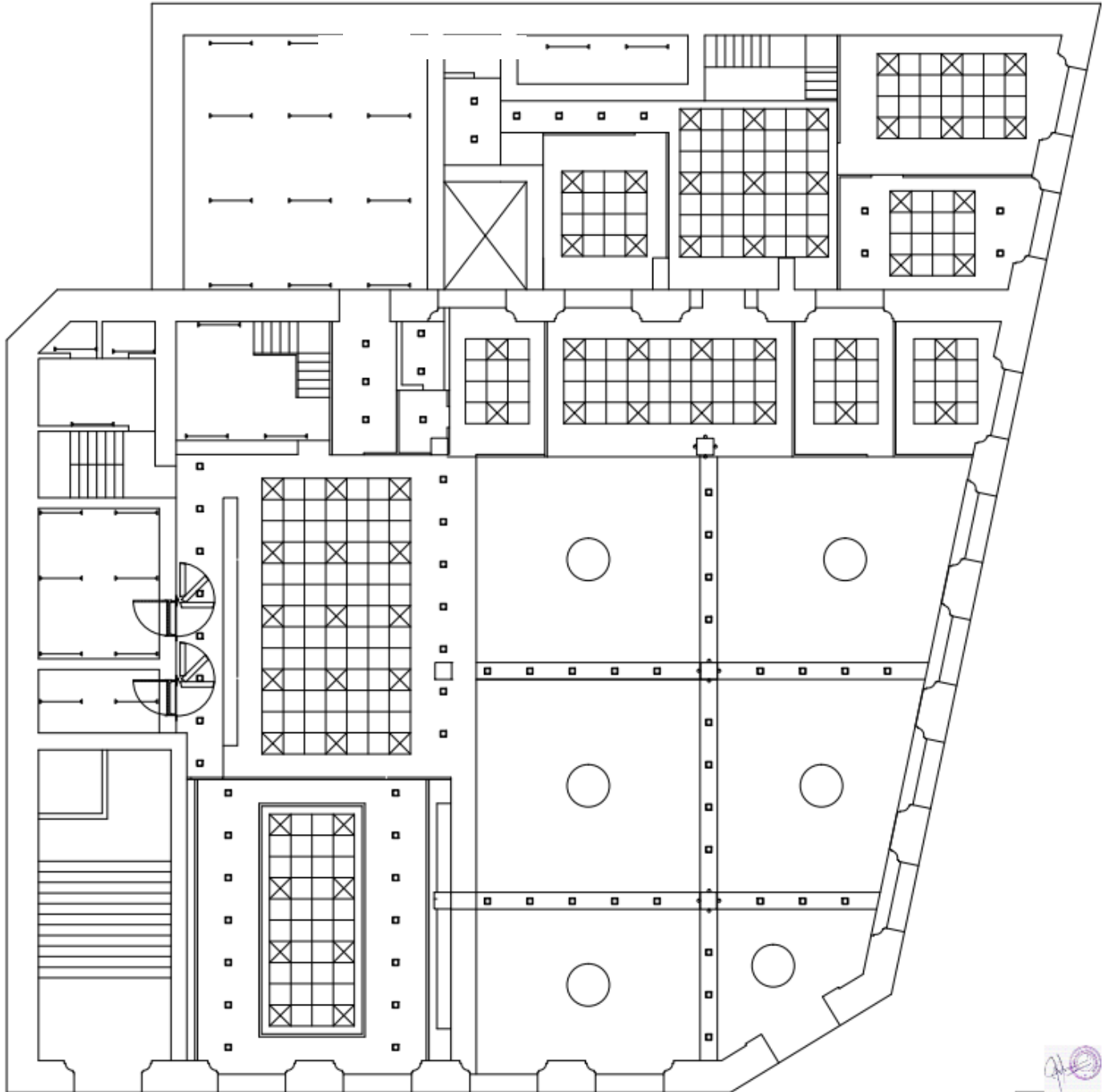
Place:

Signature & Seal of the Tenderer

Date:







GROUND FLOOR PLAN OF M. S. MARG BRANCH FOR INDIAN BANK

